

| | |
|----------|-------------------------------------|
| COMPUTER | <input checked="" type="checkbox"/> |
| RECORDED | <input checked="" type="checkbox"/> |
| COMPARED | <input type="checkbox"/> |

MICHELLE "MICKI" UTSLER, COUNTY RECORDER
MADISON IOWA

RETURN TO: BOLDMAN LAND SURVEYING, P.C., BOX 66, WINTERSSET, IA 50273 515-462-9242

UNITED STATES PUBLIC LAND SURVEY CORNER CERTIFICATE

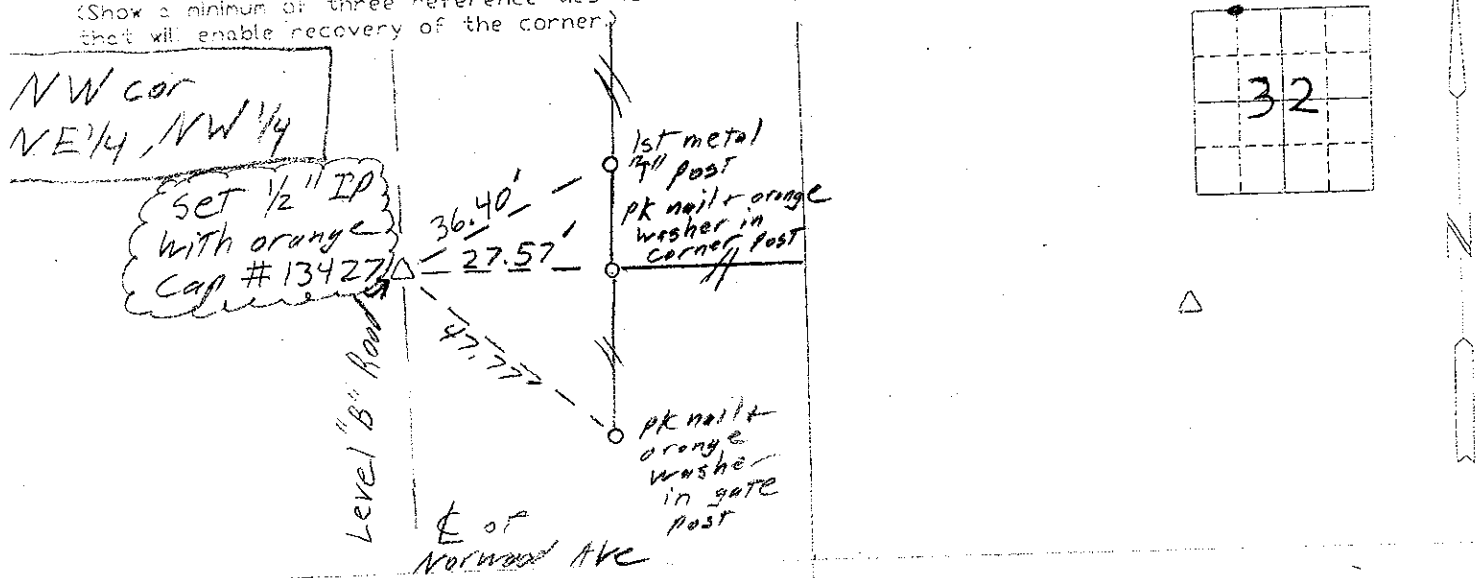
Land Survey Monuments situated in Section 32 of Township 74 Range 27
of the Fifth Principal Meridian, Madison County, Iowa
Previously recorded in _____ In County Recorder's Office.
(book, page, document number, etc.)

(Show reason for preparing this certificate, the evidence and detailed procedures used in establishing the corner positions and monumentation found or placed.)

Monument Description and Remarks: NW cor, NE 1/4 NW 1/4 set 1/2" IP in line with east-west fence.

PLAN-VIEW

(Show a minimum of three reference ties to durable physical objects, relevant monuments and physical conditions that will enable recovery of the corner.)



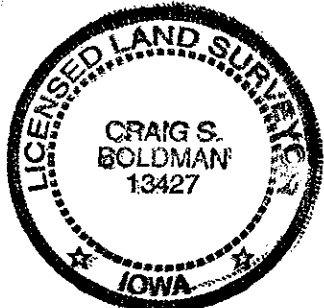
I hereby certify that the survey work was completed and this certificate was prepared by me or under my direct personal supervision and that I am a duly Licensed Land Surveyor under the laws of the State of Iowa

List Corners to be indexed

| Corners | Section | Twp | Range |
|--------------------------|---------|-----|-------|
| NW cor NE 1/4, NW 1/4 | 32 | 74 | 27 |

Signature: Craig S. Boldman
Craig S. Boldman

Date: 11/17/04 Reg. No. 13427



04084