

COMPUTER
RECORDED
COMPARED

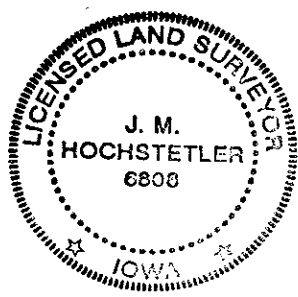
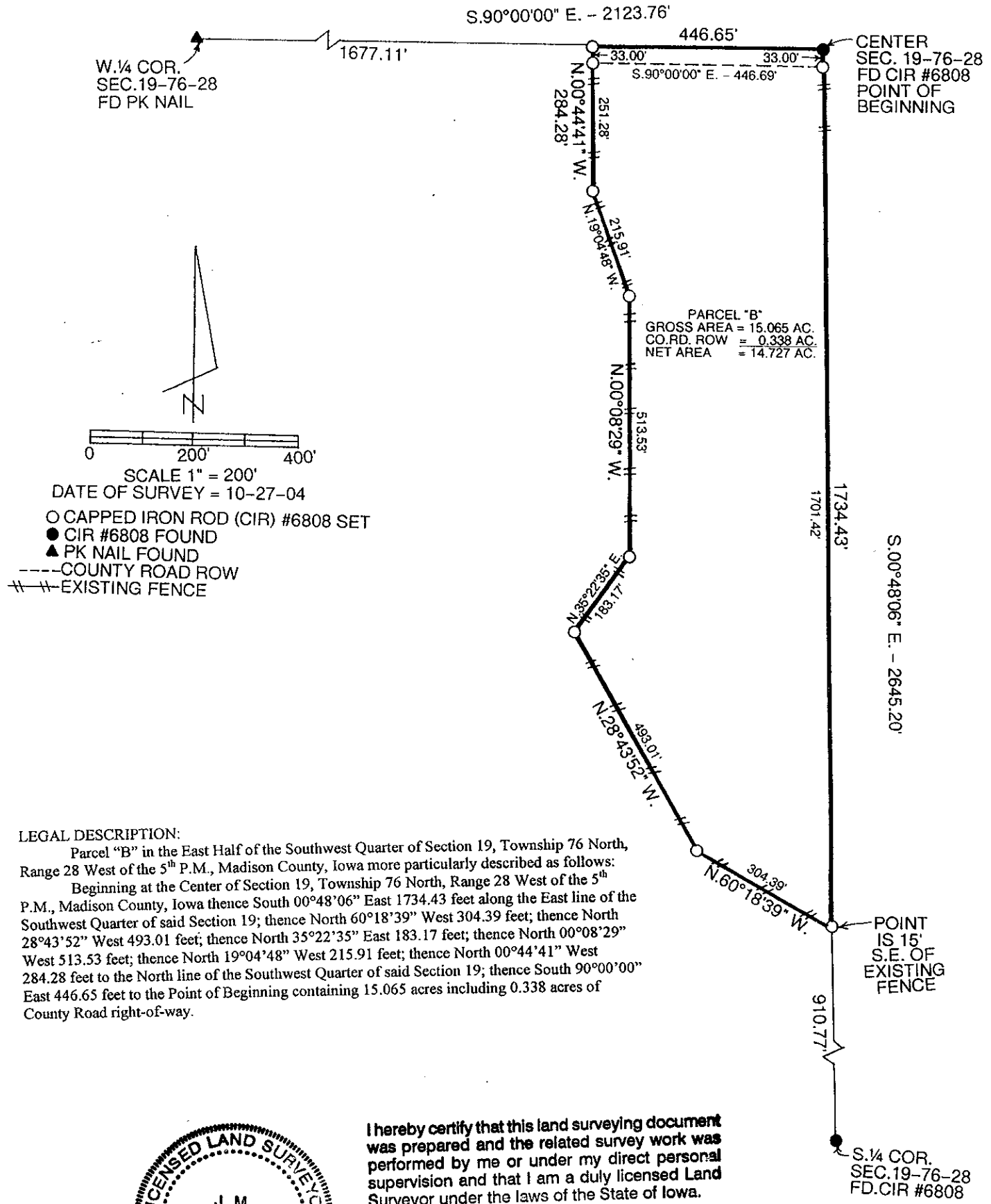
MICHELLE "MICKI" UTSLER, COUNTY RECORDER
MADISON IOWA

VANCE & HOCHSTETLER, P.C. CONSULTING ENGINEERS, WINTERSET, IOWA (515) 462-3995

CHARLES T. VANCE, 110 WEST GREEN ST., WINTERSET, IOWA 50273

JAMES M HOCHSTETLER, 110 WEST GREEN ST., WINTERSET, IOWA 50273

PLAT OF SURVEY IN THE EAST HALF OF THE SOUTHWEST QUARTER OF SECTION
19, TOWNSHIP 76 NORTH, RANGE 28 WEST OF THE 5TH P.M., MADISON COUNTY,
IOWA OWNED BY DAVID W. HOWELL AND KIMBERLY S. HOWELL.



I hereby certify that this land surveying document was prepared and the related survey work was performed by me or under my direct personal supervision and that I am a duly licensed Land Surveyor under the laws of the State of Iowa.

J.M. Hochstetler
J.M. HOCHSTETLER
License number 6808 Date 10/29/04
My license renewal date is December 31, 2015
Pages or sheets covered by this seal: 1