



MICHELLE "MICKI" UTSLER, COUNTY RECORDER
MADISON IOWA

RETURN TO: BOLDMAN LAND SURVEYING, P.C., BOX 66, WINTERSSET, IA 50273 515-462-9242
UNITED STATES PUBLIC LAND SURVEY CORNER CERTIFICATE

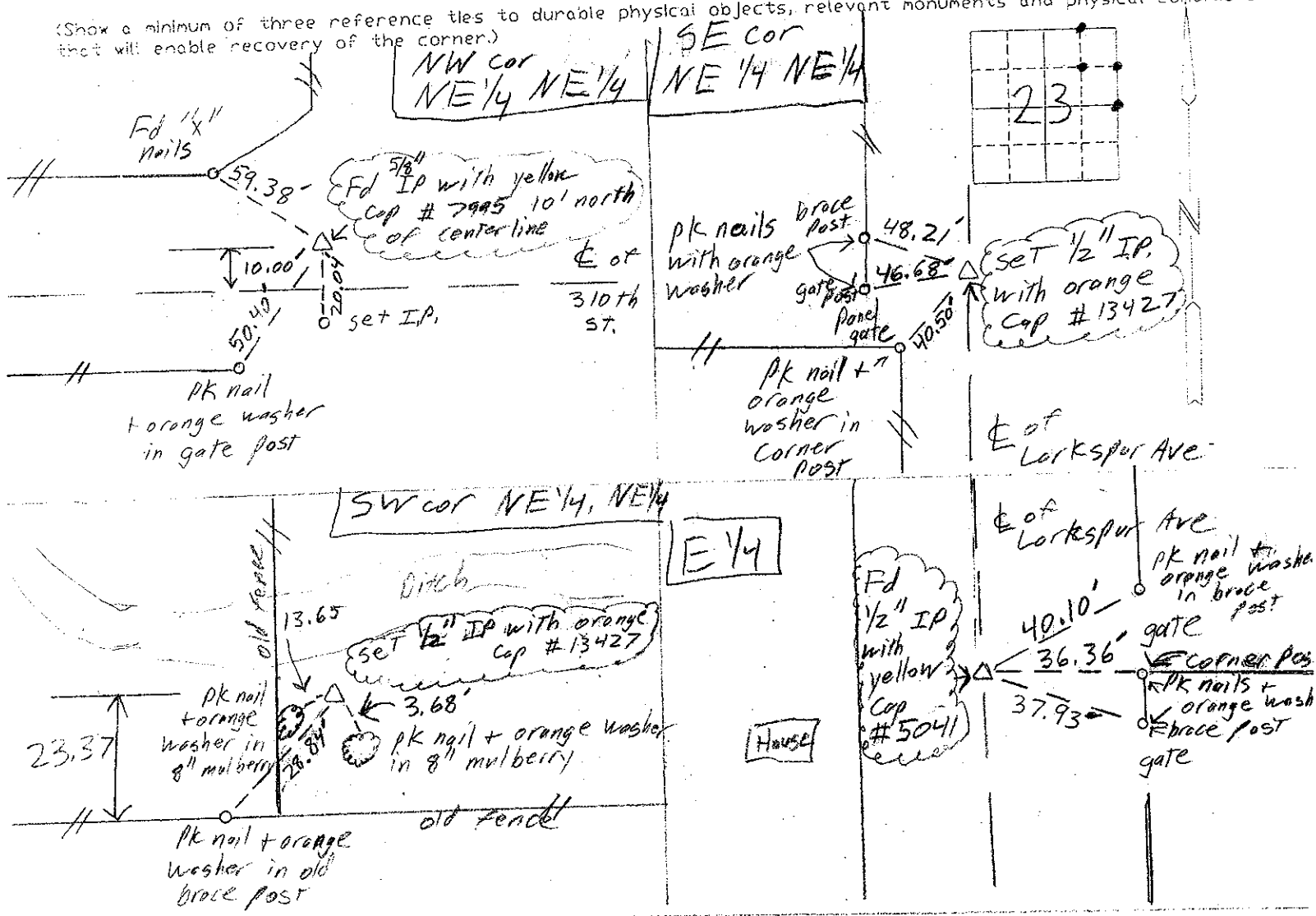
Land Survey Monuments situated in Section 23 of Township 74 Range 28,
of the Fifth Principal Meridian, Madison County, Iowa
Previously recorded in _____ In County Recorder's Office.
(book, page, document number, etc.)

(show reason for preparing this certificate, the evidence and detailed procedures used in establishing the corner positions and monumentation found or placed.)

Monument Description and Remarks: E 1/4 Found 1/2" IP w/ yellow cap # 5041 in line with fence to east, SE cor NE 1/4, NE 1/4 set halfway on line between NE cor E 1/4 cor.

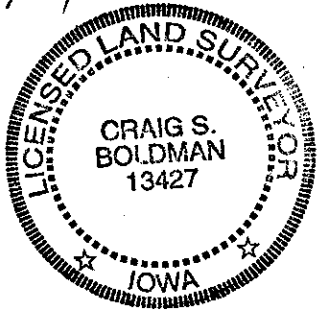
PLAN-VIEW

(Show a minimum of three reference ties to durable physical objects, relevant monuments and physical conditions that will enable recovery of the corner.)



I hereby certify that the survey work was completed and this certificate was prepared by me or under my direct personal supervision and that I am a duly Licensed Land Surveyor under the laws of the State of Iowa

Signature: Craig S. Boldman
Date: 11/4/04 Reg. No. 13427



List Corners to be indexed

Corners	Section	Twp	Range
E 1/4	23	74	28
NW cor NE 1/4, NE 1/4	23	74	28
SW cor NE 1/4, NE 1/4	23	74	28
SE cor NE 1/4, NE 1/4	23	74	28

04089