

MICHELLE "MICKI" UTSLER, COUNTY RECORDER
MADISON IOWA

RETURN TO: BOLDMAN LAND SURVEYING, P.C., BOX 66, WINTERSET, IA 50273 515-462-9242

UNITED STATES PUBLIC LAND SURVEY CORNER CERTIFICATE

COMPUTER RECORDED	<input checked="" type="checkbox"/>
COMPARED	<input type="checkbox"/>

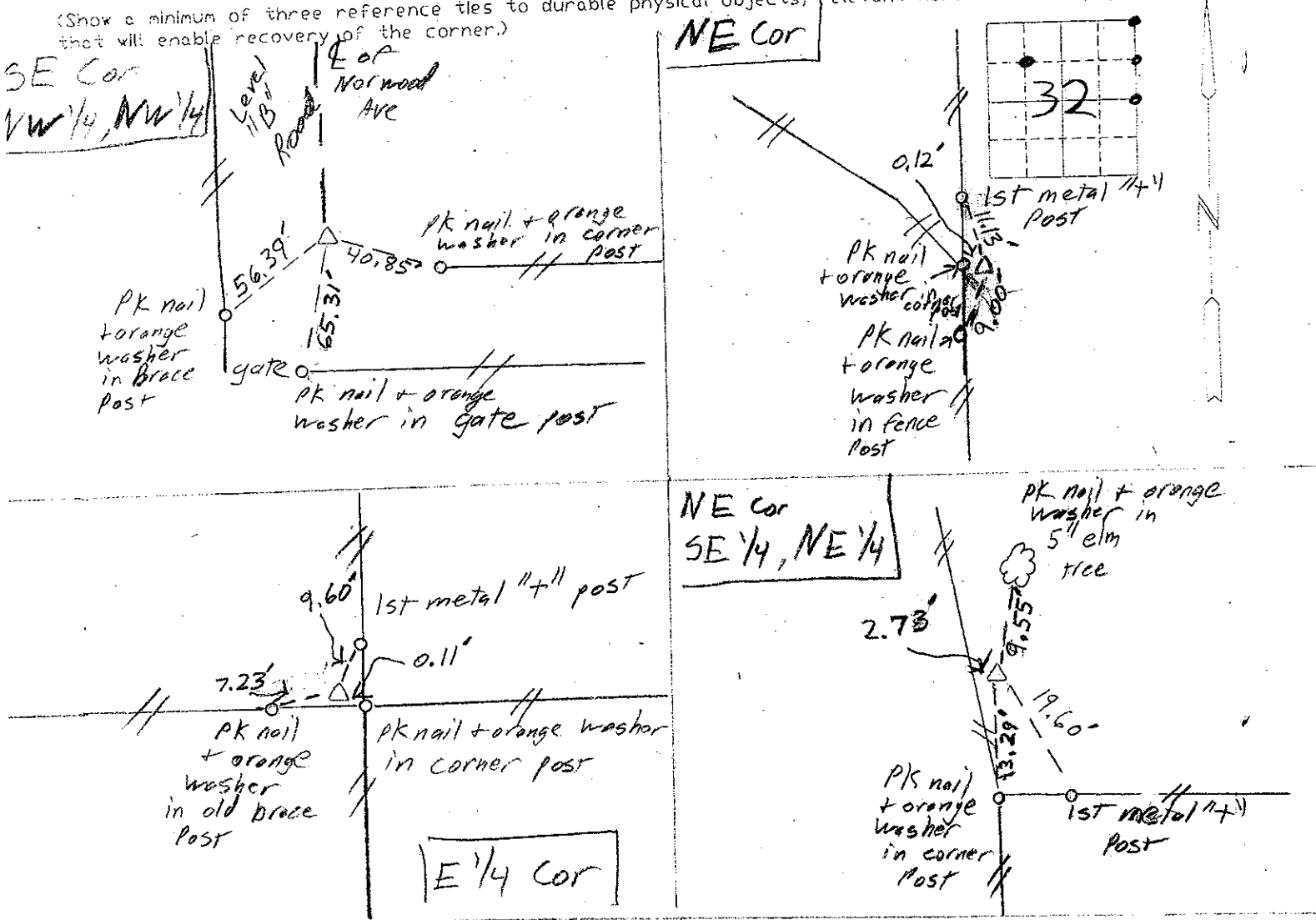
Land Survey Monuments situated in Section 32, Township 74, Range
of the Fifth Principal Meridian, Madison County, Iowa
Previously recorded in None Found In County Recorder's Office.
(book, page, document number, etc.)

(Show reason for preparing this certificate, the evidence and detailed procedures used in establishing the corner positions and monumentation found or placed.)

Monument Description and Remarks: NE cor - set up at old fence cor. post
E 1/4 - set up at 4-way fence intersection. SE cor NW 1/4 NW 1/4 - set
up at calc'd corner. NE cor SE 1/4 NE 1/4 - set half way between
NE & E 1/4 corners.

PLAN-VIEW

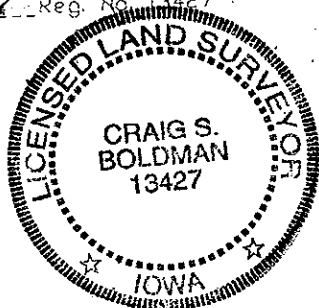
(Show a minimum of three reference ties to durable physical objects, relevant monuments and physical conditions that will enable recovery of the corner.)



I hereby certify that the survey work was completed and this certificate was prepared by me or under my direct personal supervision and that I am a duly Licensed Land Surveyor under the laws of the State of Iowa

Signature: Craig S. Boldman

Date: 11/4/04 Reg. No. 13427



List Corners to be indexed

Corners	Section	Twp	Range
NE	32	74	27
E 1/4	"	"	"
SE cor	"	"	"
NW 1/4 NW 1/4	"	"	"
NE cor	"	"	"
SE 1/4 NE 1/4	"	"	"

04084