

MICHELLE "MICKI" UTSLER, COUNTY RECORDER
MADISON IOWA

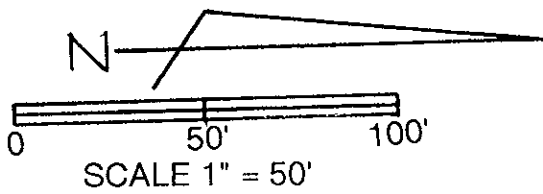
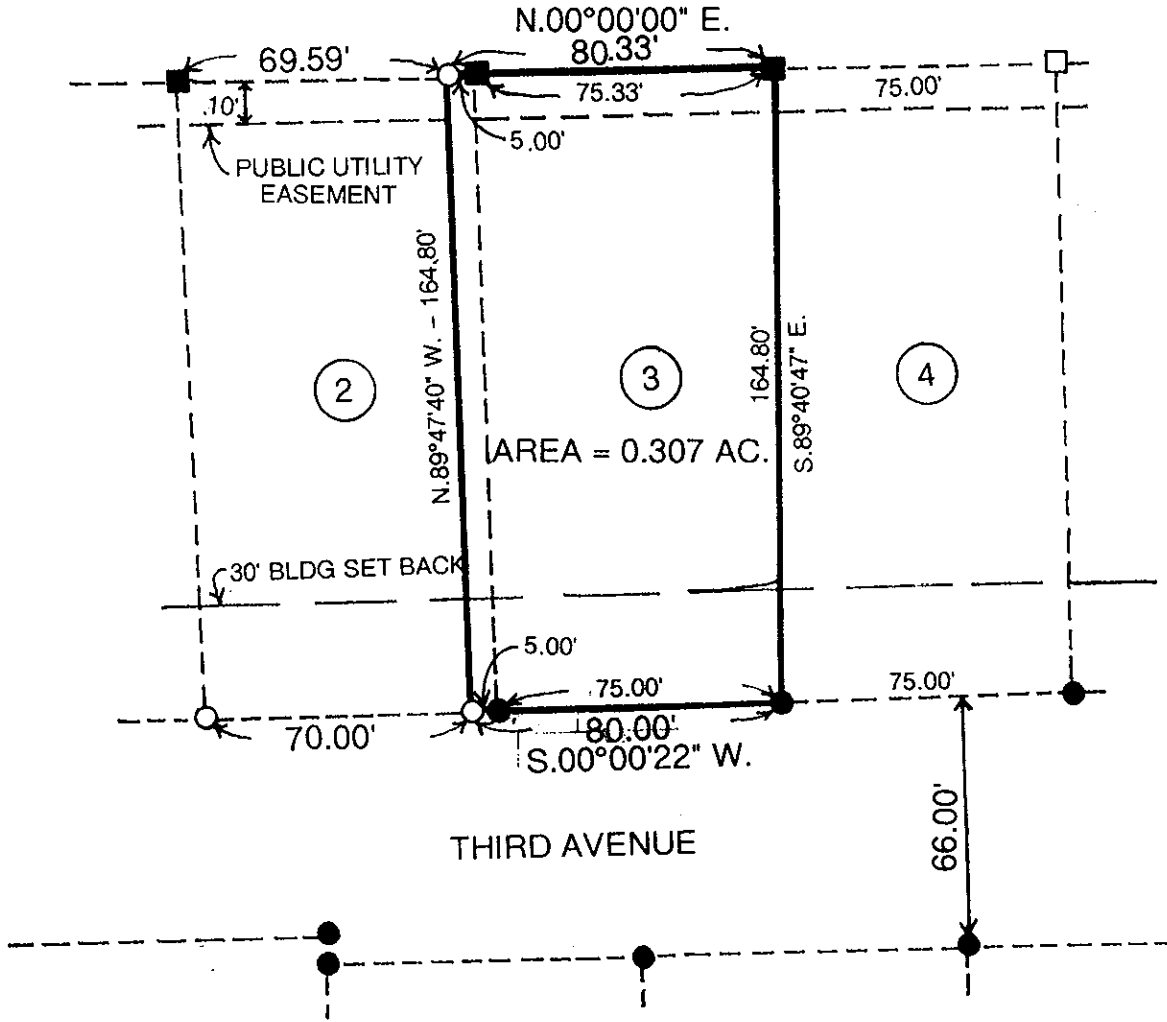
VANCE & HOCHSTETLER, P.C. CONSULTING ENGINEERS, WINTERSET, IOWA (515) 462-3995

CHARLES T. VANCE, 110 WEST GREEN ST., WINTERSET, IOWA 50273

JAMES M HOCHSTETLER, 110 WEST GREEN ST., WINTERSET, IOWA 50273

COMPUTER	<input checked="" type="checkbox"/>
RECORDED	<input checked="" type="checkbox"/>
COMPARED	<input type="checkbox"/>

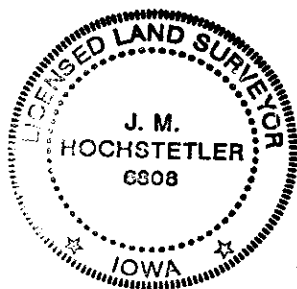
PLAT OF SURVEY OF LOT 3 AND THE NORTH 5.00 FEET OF LOT 2 OF CIRCLE HEIGHTS PLAT NO. 3, PHASE 2, CITY OF WINTERSET, MADISON COUNTY, IOWA OWNED BY SAWYERS CUSTOM HOMES.



LEGAL DESCRIPTION:

Lot 3 and the North 5.00 feet of Lot 2 of Circle Heights Plat No. 3, Phase 2, City of Winterset, Madison County, Iowa.

- CAPPED IRON ROD (CIR) #6808 SET
- CIR #6808 FOUND
- 1/2" IRON ROD FOUND



I hereby certify that this land surveying document was prepared and the related survey work was performed by me or under my direct personal supervision and that I am a duly licensed Land Surveyor under the laws of the State of Iowa.

J.M. Hochstetler
 J.M. HOCHSTETLER
 License number 6808 Date 10/18/04
 My license renewal date is December 31, 2005
 Pages or sheets covered by this seal: 1