

COMPUTER   
RECORDED   
COMPARED

MICHELLE "MICKI" UTSLER, COUNTY RECORDER  
MADISON IOWA

VANCE & HOCHSTETLER, P.C., CONSULTING ENGINEERS, WINTERSSET, IOWA (515) 462-3995  
CHARLES T. VANCE, 110 West Green St., Winterset, Iowa, 50273  
JAMES M HOCHSTETLER, 110 West Green St., Winterset, Iowa 50273

04-1375

### UNITED STATES PUBLIC LAND SURVEY CORNER CERTIFICATE

Land Survey Monuments situated in Section 3 OF 3 Township 75 N Range 27 W of the Fifth Principal Meridian, MADISON County, Iowa.  
Previously recorded in \_\_\_\_\_ in County Recorder's Office.  
(book, page, document number, etc.)

(Show reason for preparing this certificate, the evidence and detailed procedures used in establishing the the corner positions and monumentation found or placed.)

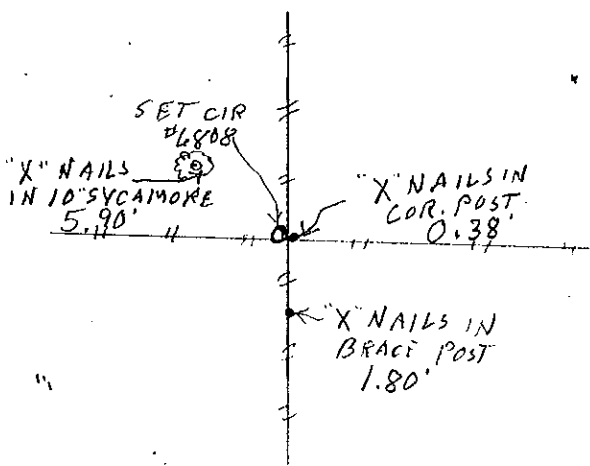
Monument Description and Remarks: SW Cor. NW 1/4 NW 1/4 - Set yellow CIR #6808 exposed at 4-way property line fence corner.

SE COR. NW 1/4 NW 1/4 - Set yellow CIR #6808 4" deep on projection of old property line fence from the West and intersection With line from found SE COR SW 1/4 NW 1/4 and calculated location of NE Cor NW 1/4 NW 1/4. NE COR NW 1/4 NW 1/4 in middle of corn field and probably destroyed. No calculated from previous surveys.

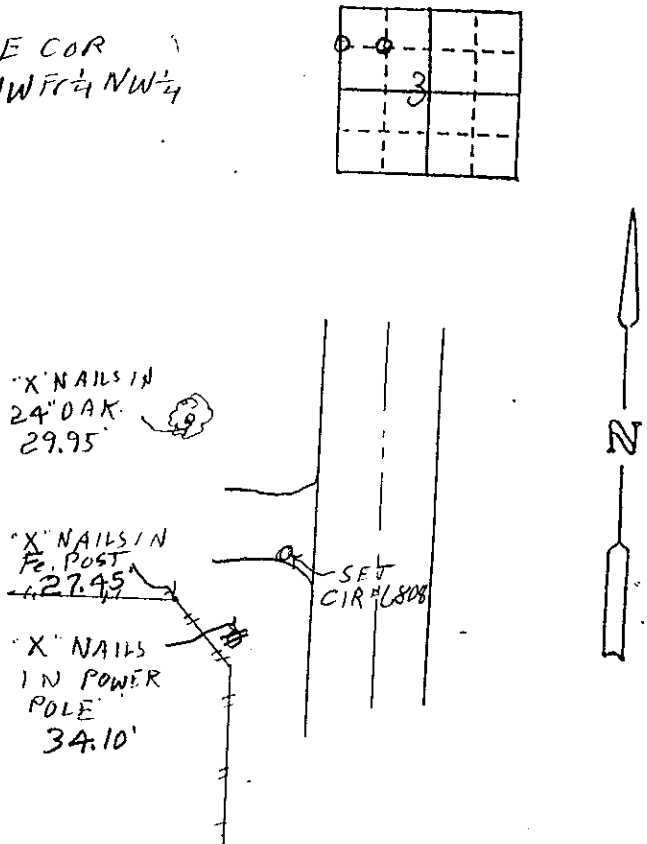
#### PLAN - VIEW

(Show a minimum of three reference ties to durable physical objects, relevant monuments and physical conditions that will enable recovery of the corner.)

SW COR  
NW 1/4 NW 1/4



SE COR  
NW 1/4 NW 1/4



#### List Corners to be Indexed

Corners	Section	Twp	Range
SW COR NW 1/4 NW 1/4	3	75 N	27 W
SE COR NW 1/4 NW 1/4	3	75 N	27 W

I hereby certify that this land surveying document was prepared and the related survey work was performed by me or under my direct personal supervision and that I am a duly licensed Land Surveyor under the laws of the State of Iowa.

James Hochstetler  
J.M. HOCHSTETLER  
License number 6808 Date 9/17/04  
My license renewal date is December 31 2005  
Pages or sheets covered by this seal: 1

