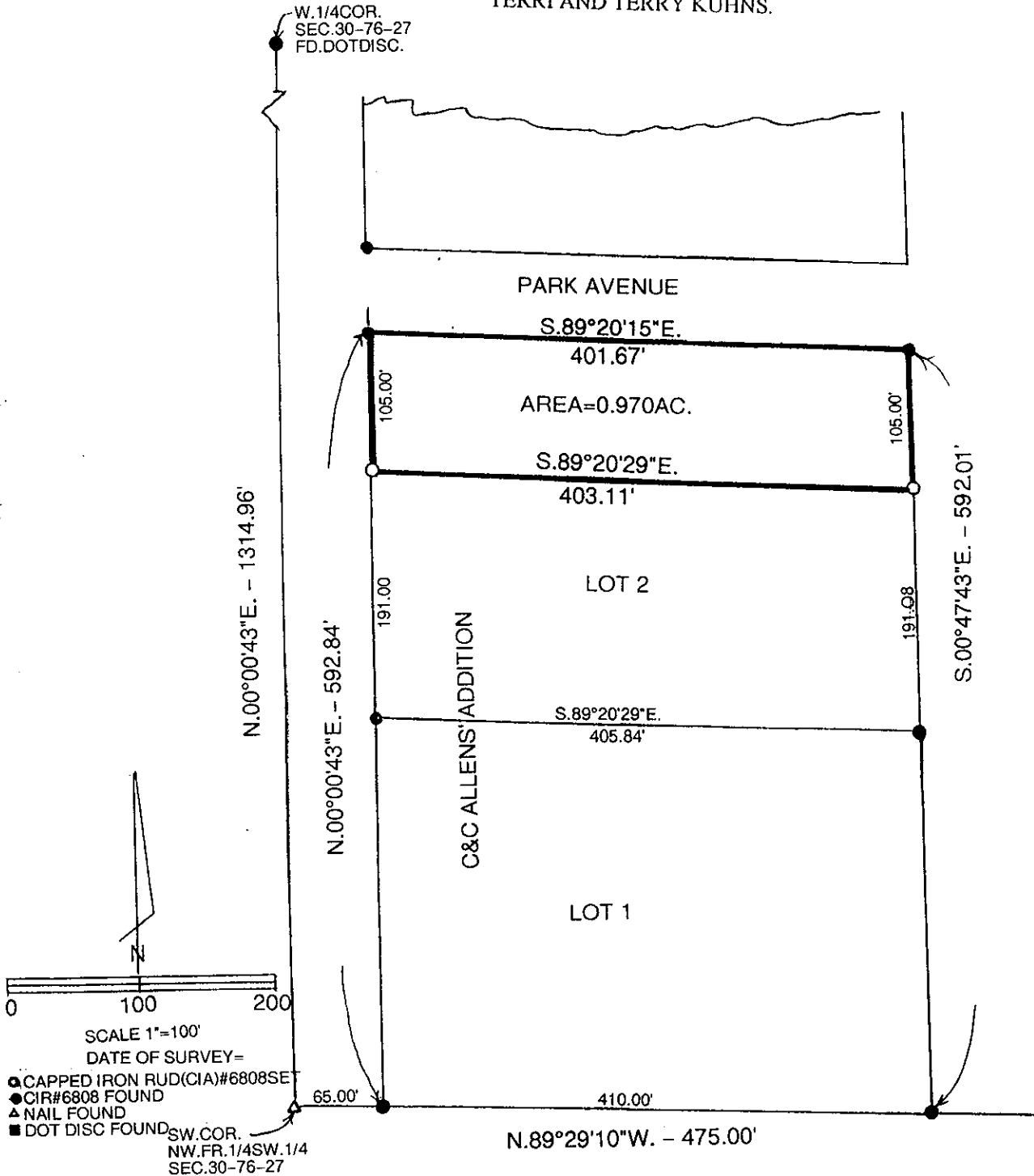


COMPUTER
RECORDED
COMPARED

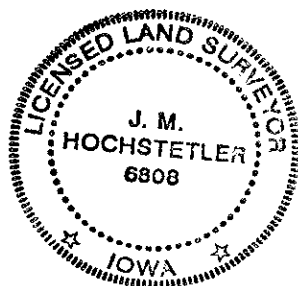
MICHELLE "MICKI" UTSLER, COUNTY RECORDER
MADISON IOWA

VANCE & HOCHSTETLER, P.C. CONSULTING ENGINEERS, WINTERSET, IOWA (515) 462-3995
CHARLES T. VANCE, 110 WEST GREEN ST., WINTERSET, IOWA 50273
JAMES M HOCHSTETLER, 110 WEST GREEN ST., WINTERSET, IOWA 50273

PLAT OF SURVEY OF THE NORTH 105.0 FEET OF LOT 2, C.&C. ALLEN'S
ADDITION CITY OF WINTERSET, MADISON COUNTY, IOWA, OWNED BY
TERRI AND TERRY KUHN'S.



LEGAL DESCRIPTION:
THE NORTH 105.00 FEET OF LOT 2, C & C ALLEN'S ADDITION,
CITY OF WINTERST, MADISON COUNTY, IOWA CONTAINING 0.970 ACRES.



I hereby certify that this land surveying document was prepared and the related survey work was performed by me or under my direct personal supervision and that I am a duly licensed Land Surveyor under the laws of the State of Iowa.

J. M. Hochstetler
J.M. HOCHSTETLER
License number 6808 Date 10/12/04
My license renewal date is December 31, 2005
Pages or sheets covered by this seal: 1