

COMPUTER
RECORDED
COMPARED

MICHELLE "MICKI" UTSLER, COUNTY RECORDER
MADISON IOWA

VANCE & HOCHSTETLER, P.C., CONSULTING ENGINEERS, WINTERSSET, IOWA (515) 462-3995
03-42S CHARLES T. VANCE, 110 West Green St., Winterset, Iowa, 50273
JAMES M HOCHSTETLER, 110 West Green St., Winterset, Iowa 50273

AMENDED UNITED STATES PUBLIC LAND SURVEY CORNER CERTIFICATE
OF

Land Survey Monuments situated in Section 26, Township 75 N, Range 26 W, of the Fifth Principal Meridian, MADISON County, Iowa.
Previously recorded in BOOK 2003 Page 2152 on 4/15/03 in County Recorder's Office.
(book, page, document number, etc.)

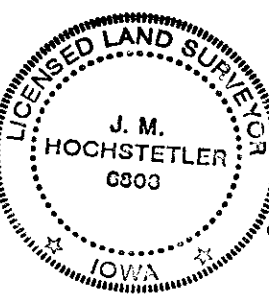
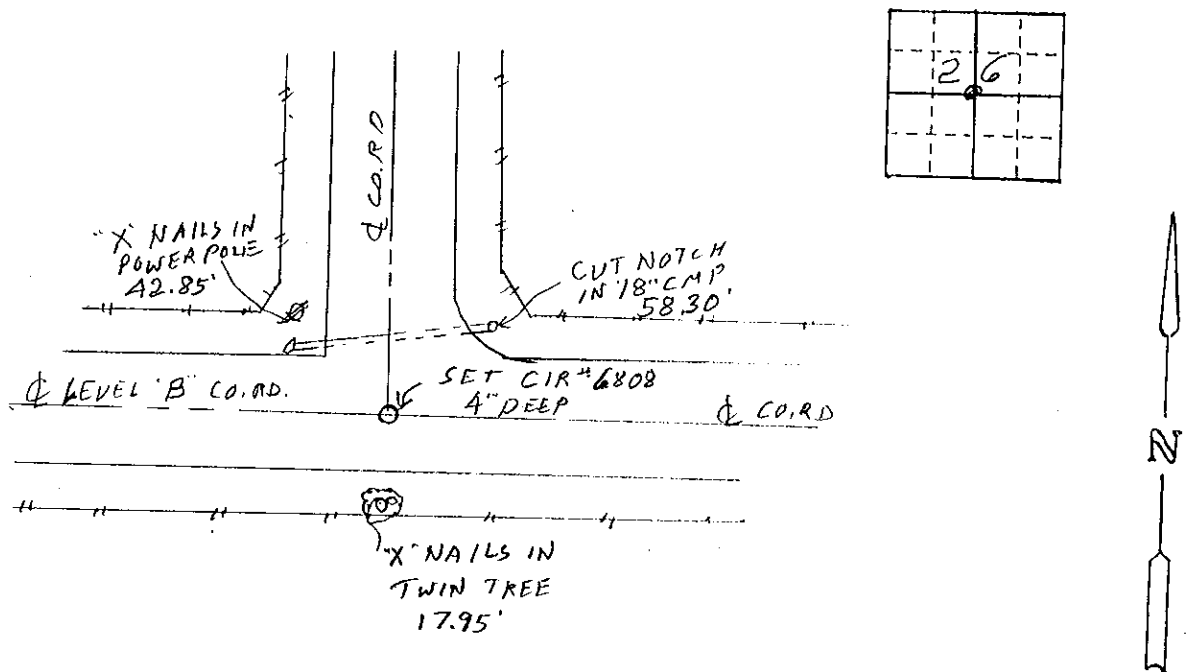
(Show reason for preparing this certificate, the evidence and detailed procedures used in establishing the the corner positions and monumentation found or placed.)

Monument Description and Remarks: CENTER - Set yellow CIR # 6808, 4" deep based on split of road right of way fences North, East and West.

Amended to correct Section number - previous certificate indicated Section 24 instead of 26.

PLAN - VIEW

(Show a minimum of three reference ties to durable physical objects, relevant monuments and physical conditions that will enable recovery of the corner.)



I hereby certify that this land surveying document was prepared and the related survey work was performed by me or under my direct personal supervision and that I am a duly licensed Land Surveyor under the laws of the State of Iowa.

J. M. Hochstetler
J.M. HOCHSTETLER
License number 6808 Date 9/3/04
My license renewal date is December 31, 2005
Pages or sheets covered by this seal: 1

List Corners to be Indexed

Corners	Section	Twp	Range
CENTER	26	75N	26W