

COMPUTER	✓
RECORDED	✓
COMPARED	_____

MICHELLE "MICKI" UTSLER, COUNTY RECORDER  
MADISON IOWA

VANCE & HOCHSTETLER, P.C., CONSULTING ENGINEERS, WINTERSSET, IOWA (515) 462-3995  
 0A7063 CHARLES T. VANCE, 110 West Green St., Winterset, Iowa, 50273  
 JAMES M HOCHSTETLER, 110 West Green St., Winterset, Iowa 50273

### UNITED STATES PUBLIC LAND SURVEY CORNER CERTIFICATE

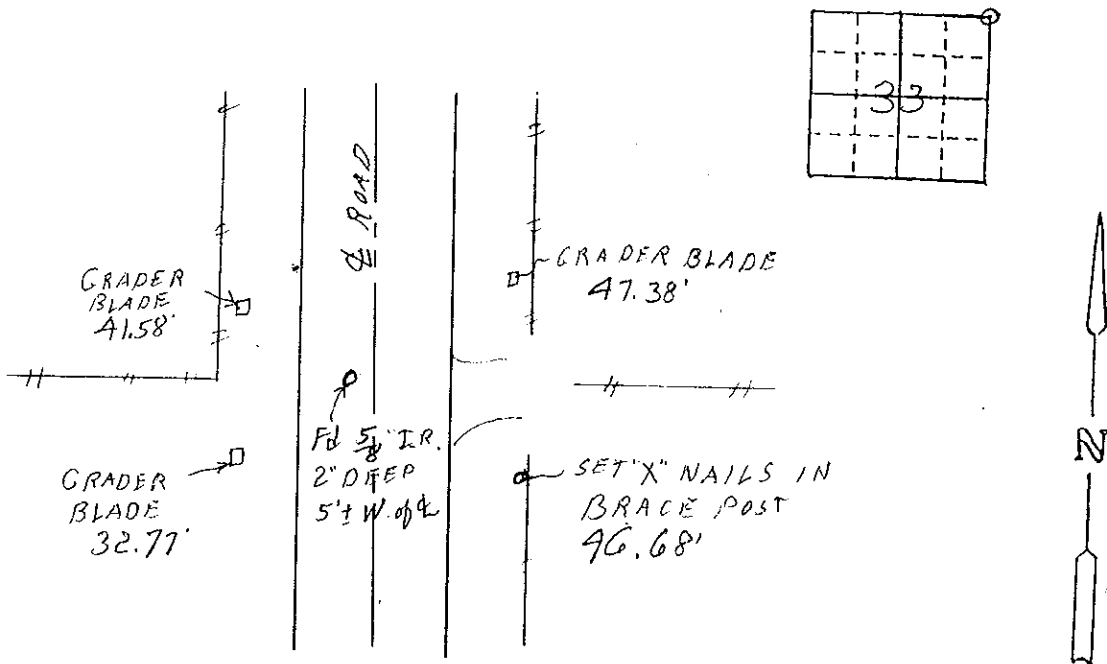
Land Survey Monuments situated in Section 33 OF 77 N Township, Range 26 W, of the Fifth Principal Meridian, MADISON County, Iowa.  
 Previously recorded in \_\_\_\_\_ in County Recorder's Office.  
 (book, page, document number, etc.)

(Show reason for preparing this certificate, the evidence and detailed procedures used in establishing the corner positions and monumentation found or placed.)

Monument Description and Remarks: NE COR - Found 5/8" Iron Rod 2" deep.  
Corner Was found and tied by County Engineer's crew. They noted  
a 1/2" Iron Rod 5' West of E but we found a 5/8" Iron Rod at this  
location.

#### PLAN - VIEW

(Show a minimum of three reference ties to durable physical objects, relevant monuments and physical conditions that will enable recovery of the corner.)



#### List Corners to be Indexed

Corners	Section	Twp	Range
NECOR	33	77N	26W

I hereby certify that this land surveying document was prepared and the related survey work was performed by me or under my direct personal supervision and that I am a duly licensed Land Surveyor under the laws of the State of Iowa.

J. M. Hochstetler  
 J.M. HOCHSTETLER  
 License number 6808 Date 7/1/04  
 My license renewal date is December 31, 2005  
 Pages or sheets covered by this seal: 1

