

COMPUTER	_____
RECORDED	_____
COMPARED	_____

MICHELLE "MICKI" UTSLER, COUNTY RECORDER
MADISON IOWA

RETURN TO: BOLDMAN LAND SURVEYING, P.C., BOX 66, WINTERSET, IA 50273 515-462-9242
UNITED STATES PUBLIC LAND SURVEY CORNER CERTIFICATE

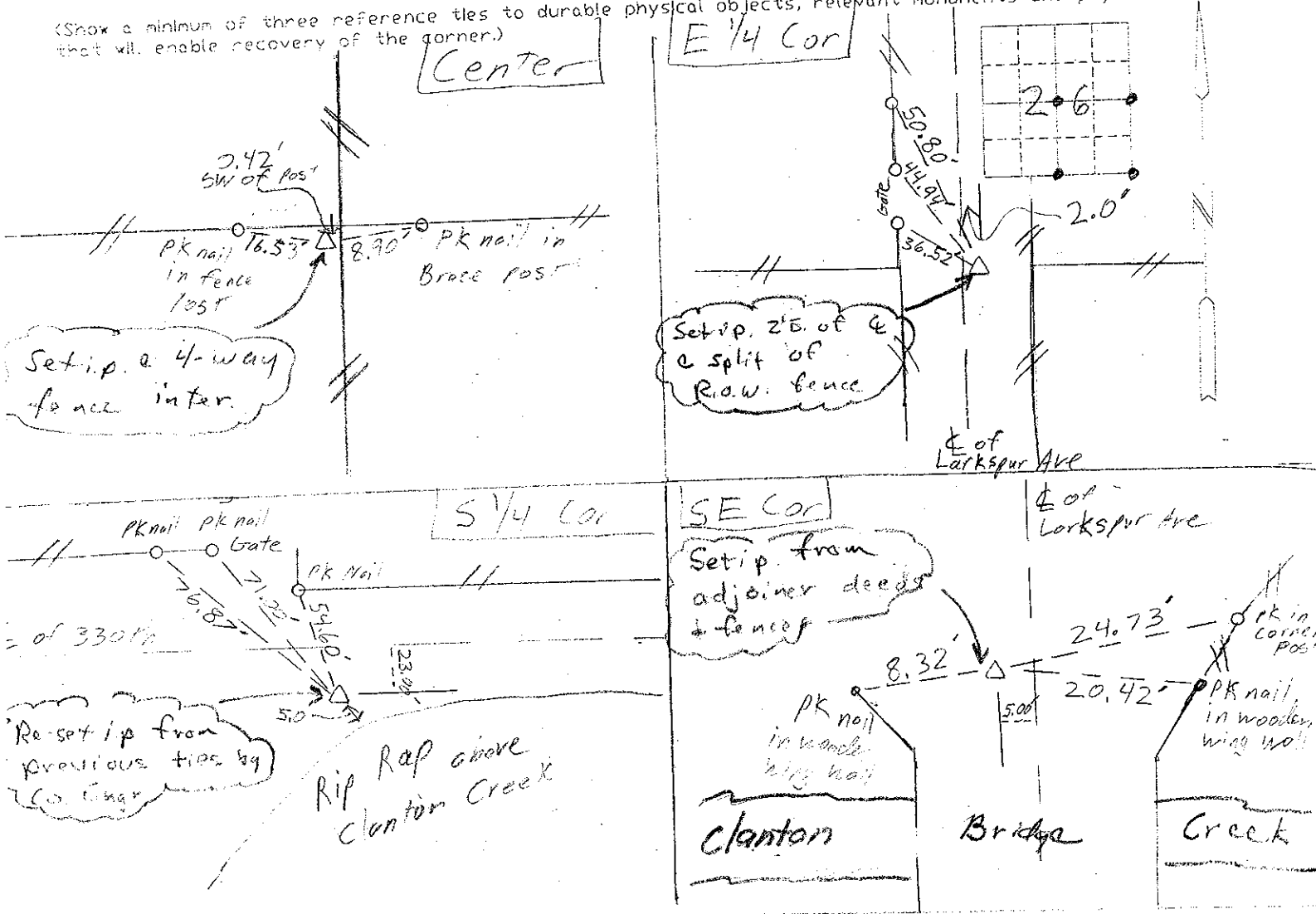
OF 26 Township 74 Range
Land Survey Monuments situated in Section 26, Township 74, Range 28, of the Fifth Principal Meridian, Madison County, Iowa
Previously recorded in None in County Recorder's Office.
(book, page, document number, etc.)

(Show reason for preparing this certificate, the evidence and detailed procedures used in establishing the corner positions and monumentation found or placed.)

Monument Description and Remarks: Set 1/2" x 24" rebar w/ orange cap #13427. Ties are pk nails w/ orange washers unless noted.

PLAN-VIEW

(Show a minimum of three reference ties to durable physical objects, relevant monuments and physical conditions that will enable recovery of the corner.)



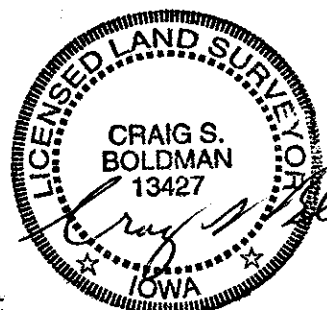
I hereby certify that the survey work was completed and this certificate was prepared by me or under my direct personal supervision and that I am a duly Licensed Land Surveyor under the laws of the State of Iowa

Signature: *Craig S. Boldman*
Craig S. Boldman

Date: 6/26/04 Reg. No. 13427

List Corners to be Indexed

Corners	Section	Twp	Range
Center	26	74	28
E 1/4	"	"	"
SE	"	"	"
S 1/4	"	"	"



04036