

MICHELLE "MICKI" UTSLER, COUNTY RECORDER
MADISON IOWA

HACKETT SURVEYING, Prepared By: Michael James Hackett, 803 East South Street, Winterset, Ia. 50273, Tel. (515) 462-1106

UNITED STATES PUBLIC LAND SURVEY CORNER CERTIFICATE OF

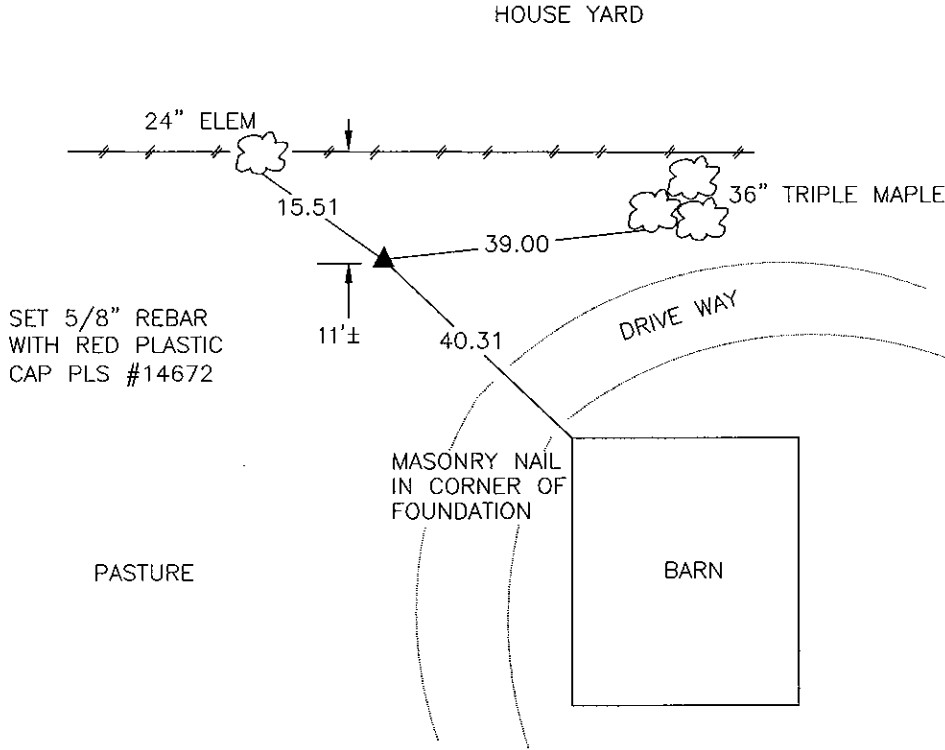
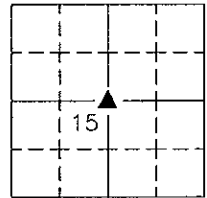
Land Survey Monuments situated in Section 15, Township 75 N, Range 29 W, of the Fifth Principal Meridian, Madison County, Iowa.
Previously recorded in _____ in County Recorder's Office.
(book, page, document number, etc.)

(Show reason for preparing this certificate, the evidence and detailed procedures used in establishing the corner positions and monumentation found or placed.)

Monument Description and Remarks: Set 5/8" rebar with red plastic cap, PLS #14672. The corner position based on the mathematical intersection between a north-south line running from the southwest corner of the Southeast Quarter to the northwest corner of the Northeast Quarter and a east-west line running from the southeast corner of the Northeast Quarter to the southwest corner of the Northwest Quarter.

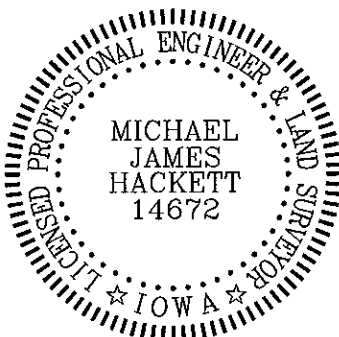
PLAN VIEW

(Show a minimum of three reference ties to durable physical objects, relevant monuments and physical conditions that will enable recovery of the corner.)



SW. COR., NE. 1/4, SEC. 15

NOTE: ALL TIES TO "X" NAILS UNLESS NOTED



I hereby certify that this land surveying document was prepared and the related survey work was performed by me or under my direct personal supervision and that I am a duly Licensed Land Surveyor under the laws of the State of Iowa.

Signed Michael James Hackett Date 5/14/04
Michael James Hackett

Iowa license number 14672.
My license renewal date is 12/31/2004.
Pages covered by this seal: 1.