

COMPUTER _____
 RECORDED _____
 COMPARED _____

MICHELLE "MICKI" UTSLER, COUNTY RECORDER
 MADISON IOWA

Aldrich Land Surveys Inc. Attn: Christopher T. Aldrich 112 N. Ewing Suite C Grimes, Iowa 50111

UNITED STATES PUBLIC LAND SURVEY CORNER CERTIFICATE
 OF

Land Survey Monument situated in Section 19, Township 74N, Range 28W, of the Fifth Principal Meridian, Madison County, Iowa. Previously recorded in Book 1, Page 585 (SW Corner) in County Recorder's Office.
 (book, page, document number, etc.)

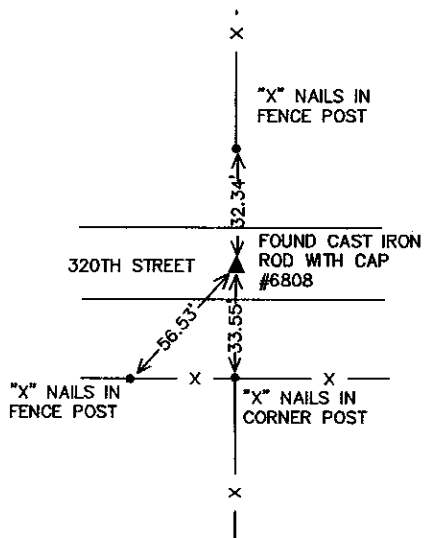
(Show reason for preparing this certificate, the evidence and detailed procedures used in establishing the corner positions and monumentation found or placed.)

Monument Description and Remarks: Southwest Corner – Found cast iron rod with cap #6808 as shown on previously recorded corner certificate. New ties are shown below.

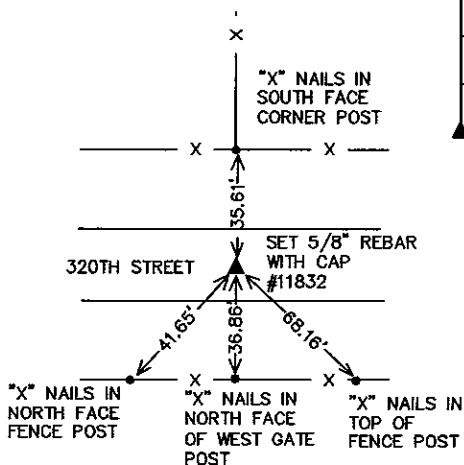
South Quarter Corner – Set 5/8" rebar with yellow cap #11832 at split distance of county road right of way fences and in line with north-south fence on the north side of road.

PLAN-VIEW

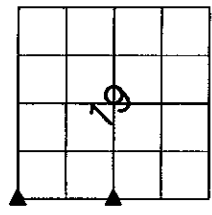
(Show a minimum of three reference ties to durable physical objects, relevant monuments and physical conditions that will enable recovery of the corner.)



Southwest Corner Section 19-74-28



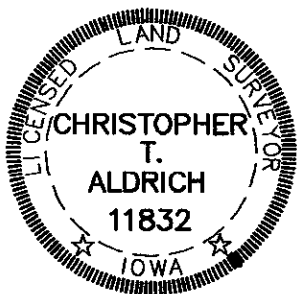
South Quarter Corner Section 19-74-28



I hereby certify that this land surveying document was prepared and the related survey work was performed by me or under my direct personal supervision and that I am a duly licensed land surveyor under the laws of the State of Iowa.

Christopher T. Aldrich 4-29-04
 Christopher T. Aldrich, LS Date
 License Number 11832

My license renewal date is December 31, 2005
 Pages or sheets covered by this seal: 1 of 1.



List corners to be indexed

Corners	Section	Twp	Range
Southwest Corner	19	74	28
South 1/4 Corner	19	74	28