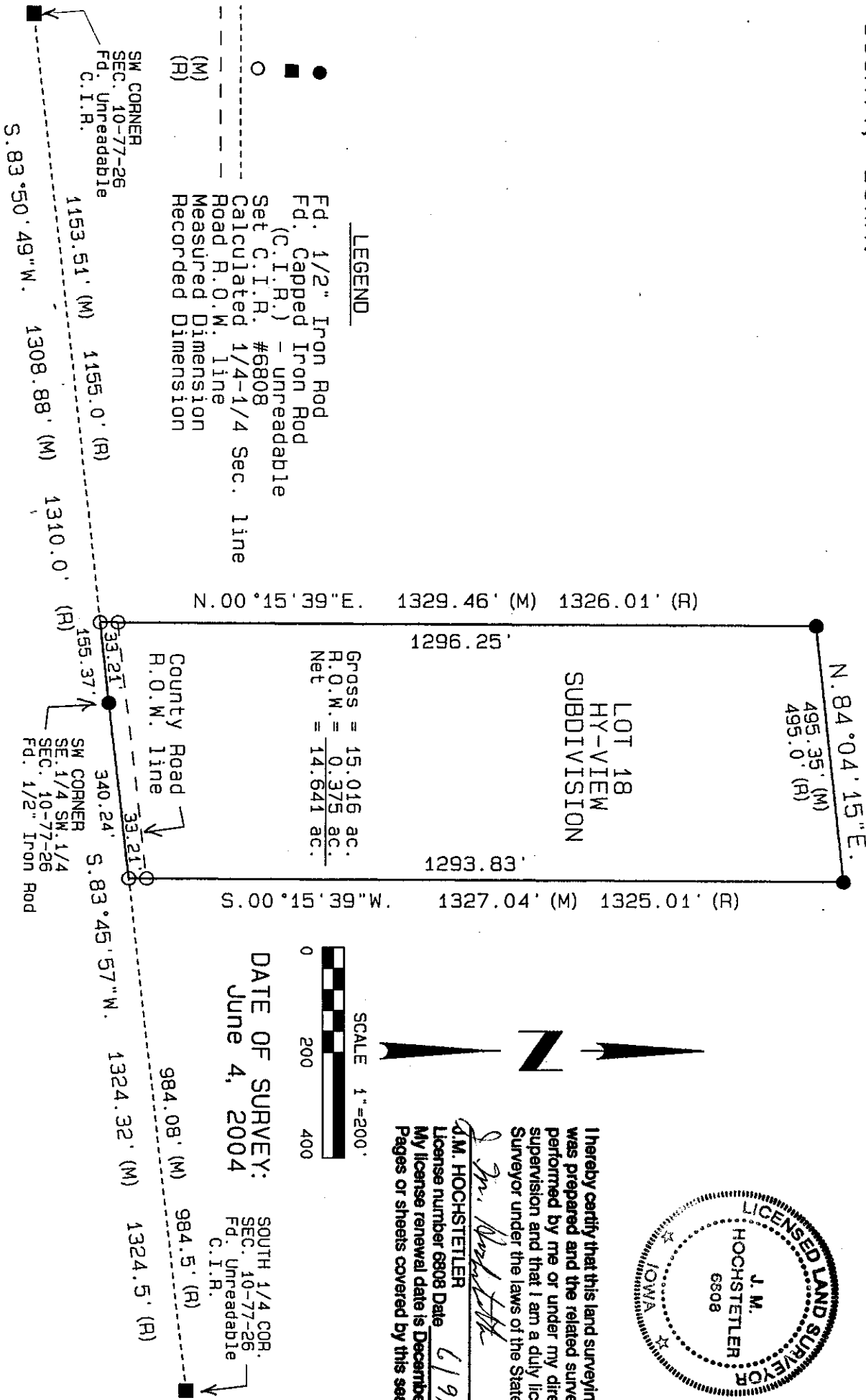


MICHELLE "MICKI" UTSLER, COUNTY RECORDER
MADISON IOWA

VANCE & HOCHSTETLER, P.C. CONSULTING ENGINEERS, WINTERSSET, IOWA (515) 462-3995
CHARLES T. VANCE, 110 WEST GREEN ST., WINTERSSET, IOWA 50273
JAMES M HOCHSTETLER, 110 WEST GREEN ST., WINTERSSET, IOWA 50273

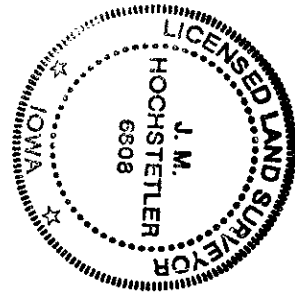
A PROPERTY LINE RETRACEMENT SURVEY FOR SHAWN GUSTIN OF
LOT 18 OF THE HY-VIEW SUBDIVISION, LOCATED IN SECTION 10,
TOWNSHIP 77 NORTH, RANGE 26 WEST OF THE 5th P.M., MADISON
COUNTY, IOWA.



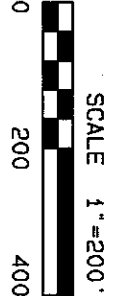
LOT 18
HY-VIEW
SUBDIVISION

Gross = 15.016 ac.
R.O.W. = 0.375 ac.
Net = 14.641 ac.

I hereby certify that this land surveying document
was prepared and the related survey work was
performed by me or under my direct personal
supervision and that I am a duly licensed Land
Surveyor under the laws of the State of Iowa.
J. M. Hochstetler
J.M. HOCHSTETLER
License number 6808 Date 6/9/04
My license renewal date is December 31, 2005
Pages or sheets covered by this seal: 1



DATE OF SURVEY:
June 4, 2004



SOUTH 1/4 COR.
SEC. 10-77-26
Fd. Unreadable
C.I.R.