

MICHELLE "MICKI" UTSLER, COUNTY RECORDER
MADISON IOWA

UNITED STATES PUBLIC LAND SURVEY CORNER CERTIFICATE OF

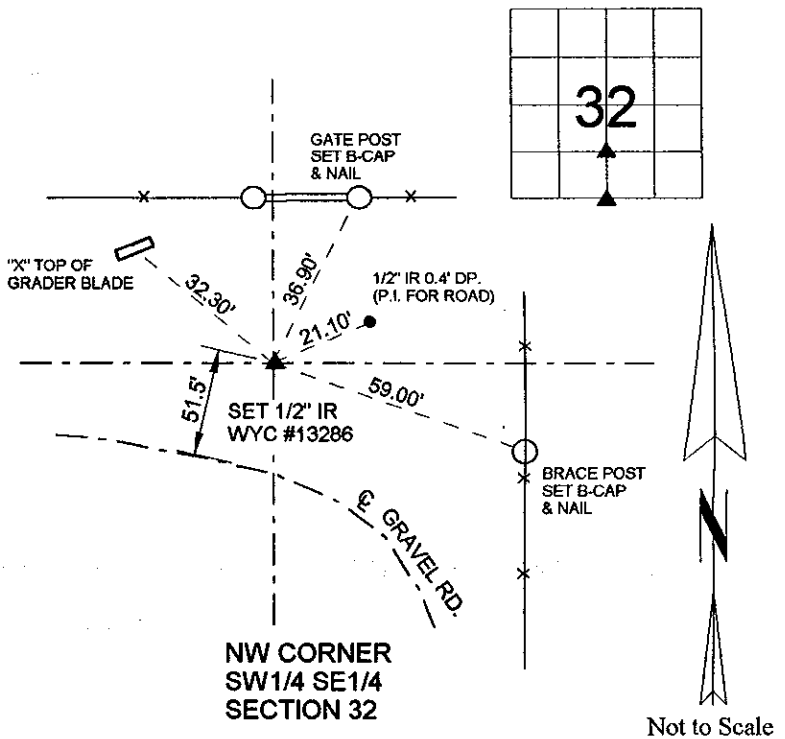
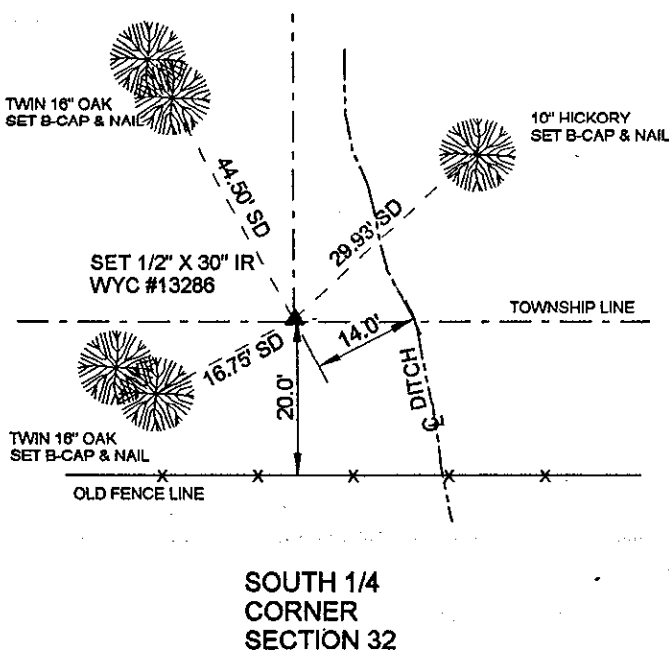
Land Survey Monuments situated in Section 32, Township 77 North, Range 27 West, of the Fifth Principal Meridian, Madison County, Iowa.
Previously recorded in _____ in County Recorder's Office.
(book, page, document number, etc...)

(Show reason for preparing this certificate, the evidence and detailed procedures used in establishing the corner positions and monumentation found or placed.)

Monument Description and Remarks: ALL CORNERS SET ARE 1/2" REBAR WITH YELLOW CAP AFFIXED STAMPED PLS #13286. SET CORNERS IN CONJUNCTION WITH PLAT OF SURVEY

PLAN - VIEW

(Show a minimum of three reference ties to durable physical objects, relevant monuments and physical conditions that will enable recovery of the corner.)

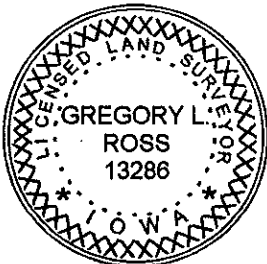


I hereby certify that this land surveying document was prepared and the related survey work was performed by me or under my direct supervision and that I am a duly licensed Land Surveyor under the laws of the State of Iowa.

Gregory L. Ross 4/14/04

Gregory L. Ross, L.S. # 13286 - Iowa Date
My License renewal date is December 31, 2004

SEAL



LIST OF CORNERS TO BE INDEXED

Corners	Section #	Twp #	Range #
SW COR NW1/4 SE1/4	32	77N	27W
SE COR NE1/4 SW1/4	32	77N	27W
NE COR SE1/4 SW1/4	32	77N	27W
N1/4 COR	5	76N	27W

ross LAND SURVEYING, inc.
P.O. Box 336, Johnston, Iowa 50131
Ph.(515) 254-2567 FX.(515) 254-1621