

REC \$ 5.00
AUD \$
R.M.F. \$ 7.00
5.00

FILED NO. _____
BOOK 2004 PAGE 1159
2004 MAR 18 PM 1:19

COMPUTER
RECORDED
COMPARED _____

MICKI UTSLER
RECORDER
MADISON COUNTY, IOWA

PREPARED BY: BRUCE LOGEMANN L.S., McCLURE ENGINEERING CO. 400 SE DELAWARE, ANKENY, IOWA 50021, 515-964-1229

McClure Engineering Company
400 SE Delaware Avenue Ankeny, Iowa 515/964-1229

UNITED STATES PUBLIC LAND SURVEY CORNER CERTIFICATE OF

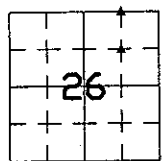
Land Survey Monuments situated in Section 26, Township 77, Range 27, West of the Fifth Principal Meridian,
MADISON County, Iowa. Not Previously recorded in MADISON COUNTY in County Recorders' Office.
(book, page, document number, etc.)

(Show reason for preparing this certificate, the evidence and detailed procedures used in establishing the corner and monumentation found or placed)

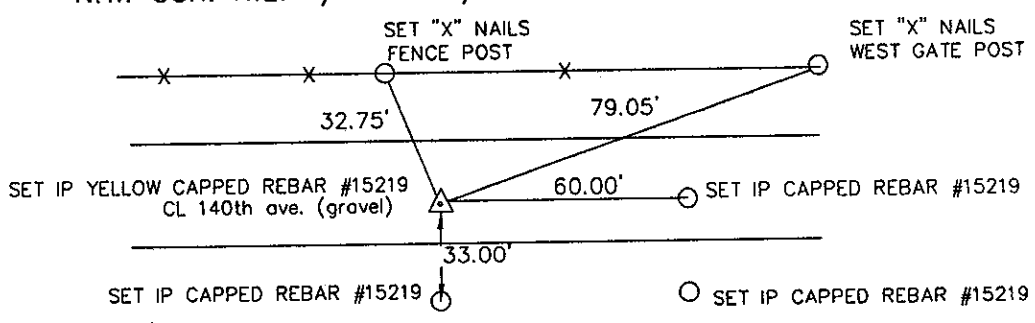
Monument Description and Remarks: SEE SUBDIVISION (QUAIL'S MEADOW)
SET SECTION CORNERS HALFWAY AND ON LINE WITH EXISTING SECTION CORNERS ESTABLISHED ON
PLAT OF SURVEY RECORDED IN BK 2001 PG 2316 MADISON COUNTY RECORDERS

PLAN VIEW

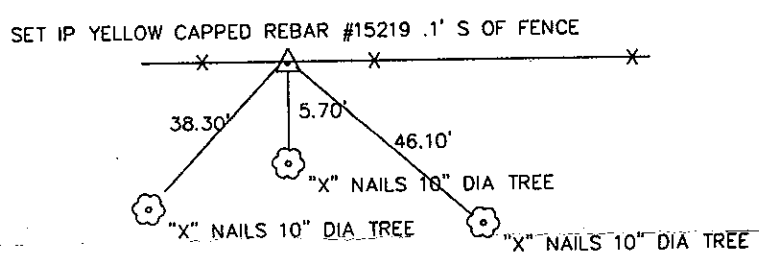
(Show a minimum of three reference ties to durable physical objects, relevant monuments and physical condition that positions will enable recovery of the corner.)



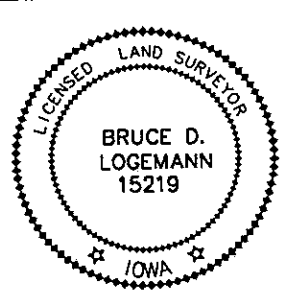
N.W. COR. N.E. 1/4 N.E. 1/4 SECTION 26-77-27



SW. COR N.E. 1/4 N.E. 1/4 SECTION 26-77-27



Corner	Section	Twp	Range
SW SE 1/4	23	77	27



I hereby certify that the survey work completed and this certificate was prepared by me or under my direct supervision and that I am a duly licenced land surveyor under the laws of the state of Iowa.

SIGNATURE: B. Logemann DATE: 3/15/04
BRUCE D. LOGEMANN

MY LICENSE RENEWAL DATE IS DECEMBER 31, 2005
PAGES OR SHEETS COVERED BY THIS SEAL: 1