

2001 FEB -7 AM 10: 26

COMPUTER   
 RECORDED   
 COMPARED

MICKI UTSLER  
 RECORDER  
 MADISON COUNTY, IOWA

Return to: MJR Mapping, Inc. P.O. BOX 143, Adel, IA 50003

UNITED STATES PUBLIC LAND SURVEY CORNER CERTIFICATE  
 OF

REC \$ 5.00  
 AUD \$ \_\_\_\_\_  
 R.M.F. \$ 1.00

Land Survey Monuments situated in Section 6, Township 77 North, Range 29 West, of the Fifth Principal Meridian, Madison County, Iowa.

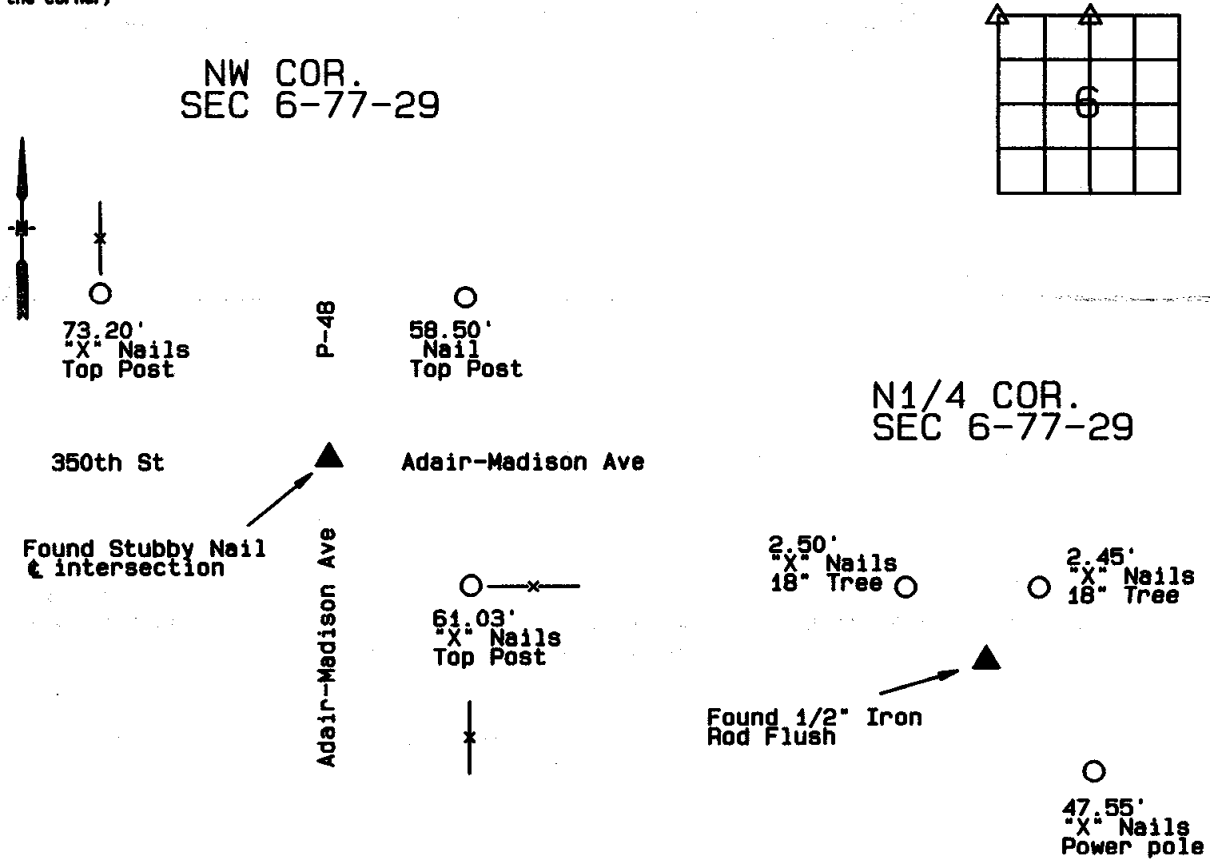
Previously recorded in \_\_\_\_\_ in County Recorder's Office.  
 (book, page, document number, ect.)

(Show reason for preparing this certificate, the evidence and detailed procedures used in establishing the corner positions and found or placed.)

Monument Description and Remarks: Found monuments from Dallas County Engineers records

PLAN - VIEW

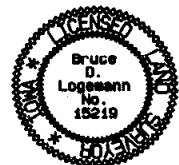
(Show a minimum of three reference ties to durable physical objects, relevant monuments and physical conditions that will enable recovery of the corner)



I hereby certify that this land surveying document was prepared and the related survey work was performed by me or under my direct personal supervision and that I am a duly licensed Land Surveyor under the laws of the State of Iowa.

Signed Bruce D. Logemann Date 1/30/01

Bruce D. Logemann, L.S.  
 Iowa license No. 15219  
 My license renewal date is December 31, 2001



List Corners to be Indexed

Corners	Section	Twp.	Range
N1/4 COR.	6	77	29
NW COR.	6	77	29