

REC \$ 5<sup>00</sup>  
AUD \$ \_\_\_\_\_  
R.M.F. \$ 1<sup>00</sup>

COMPUTER   
RECORDED   
COMPARED \_\_\_\_\_

MICKI UTSLER  
RECORDER  
MADISON COUNTY, IOWA

VANCE & HOCHSTETLER, P.C. CONSULTING ENGINEERS, WINTERSSET, IOWA (515)462-399

CHARLES T. VANCE, 110 West Green St., Winterset, Iowa 50273 97-118S  
JAMES M. HOCHSTETLER, 110 West Green St., Winterset, Iowa 50273

UNITED STATES PUBLIC LAND SURVEY CORNER CERTIFICATE

SLSI 9-94

OF

Land Survey Monuments situated in Section 1, Township 77 North, Range 28 West, of the Fifth Principal Meridian, Madison County, Iowa. Previously recorded in \_\_\_\_\_ in County Recorder's Office.

(Show reason for preparing this certificate, the evidence and detailed procedures used in establishing the corner positions and monumentation found or placed.)

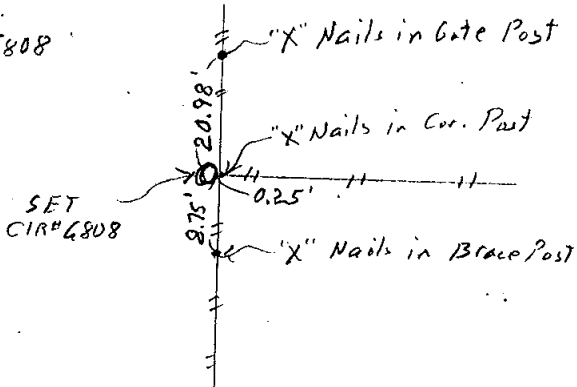
Monument Description and Remarks: S 1/4 COR. - Set CIR #6808 at established fence corner

NE COR SW 1/4 SE 1/4 - Set CIR #6808 at established fence corner.  
NE Cor. SE 1/4 SE 1/4 - Set PA Nail in Asphalt road surface in line with Ia. DOT Row. and property line fence to West on line between found E 1/4 Corner and S.E. Corner.

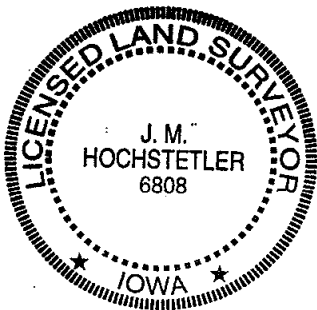
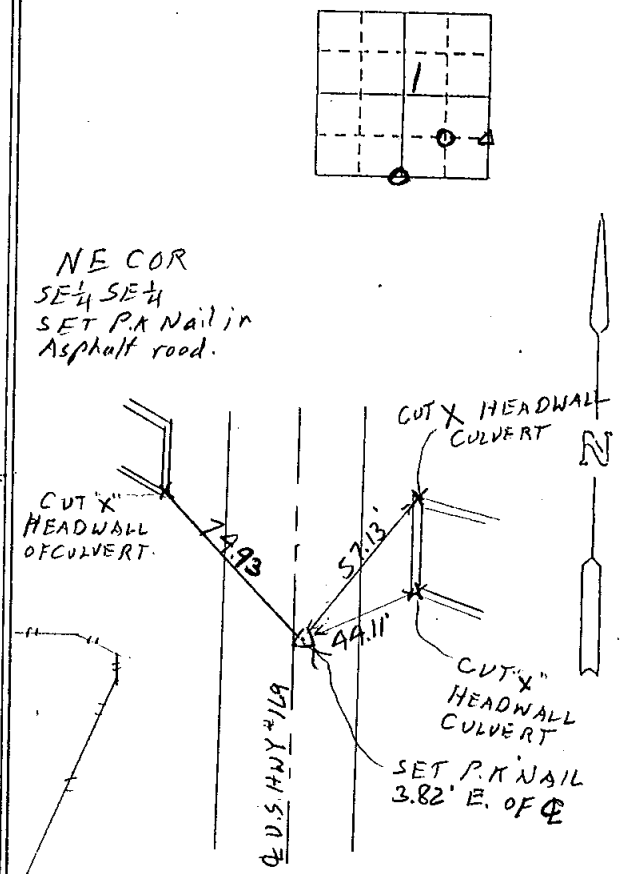
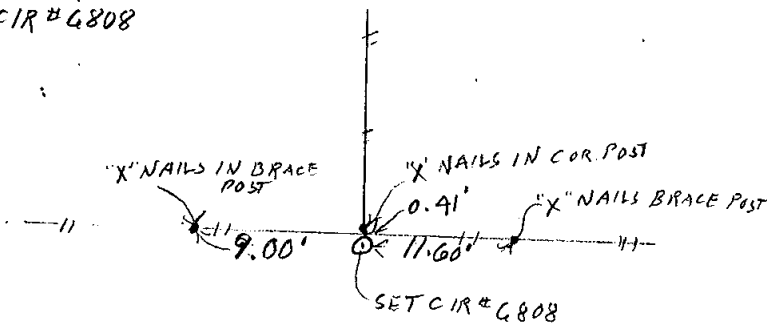
PLAN - VIEW

(Show a minimum of three reference ties to durable physical objects, relevant monuments and physical conditions that will enable recovery of the corner.)

S 1/4 COR.  
SET CIR #6808



NE COR  
SW 1/4 SE 1/4  
SET CIR #6808



I hereby certify that this land surveying document was prepared and the related survey work was performed by me or under my direct personal supervision and that I am a duly licensed Land Surveyor under the laws of the State of Iowa.

J.M. Hochstetler  
J.M. HOCHSTETLER  
License number 6808 Date 2/1/01  
My license renewal date is December 31, 2001  
Pages or sheets covered by this seal: 1

List Corners to be Indexed

Corners	Section	Twp	Range
S 1/4 Cor.	1	77	28
NE Cor SW 1/4 SE 1/4	1	77	28
NE Cor SE 1/4 SE 1/4	1	77	28