

REC \$ 5.00
AUD \$
R.M.F. \$

COMPUTER
RECORDED
COMPARED

MICKI UTSLER
RECORDER
MADISON COUNTY, IOWA

VANCE & HOCHSTETLER, P.C. CONSULTING ENGINEERS, WINTERSSET, IOWA (515)462-3995

CHARLES T. VANCE, 110 West Green St., Winterset, Iowa 50273 97-118S
JAMES M. HOCHSTETLER, 110 West Green St., Winterset, Iowa 50273

SLSI 9-94

UNITED STATES PUBLIC LAND SURVEY CORNER CERTIFICATE

OF

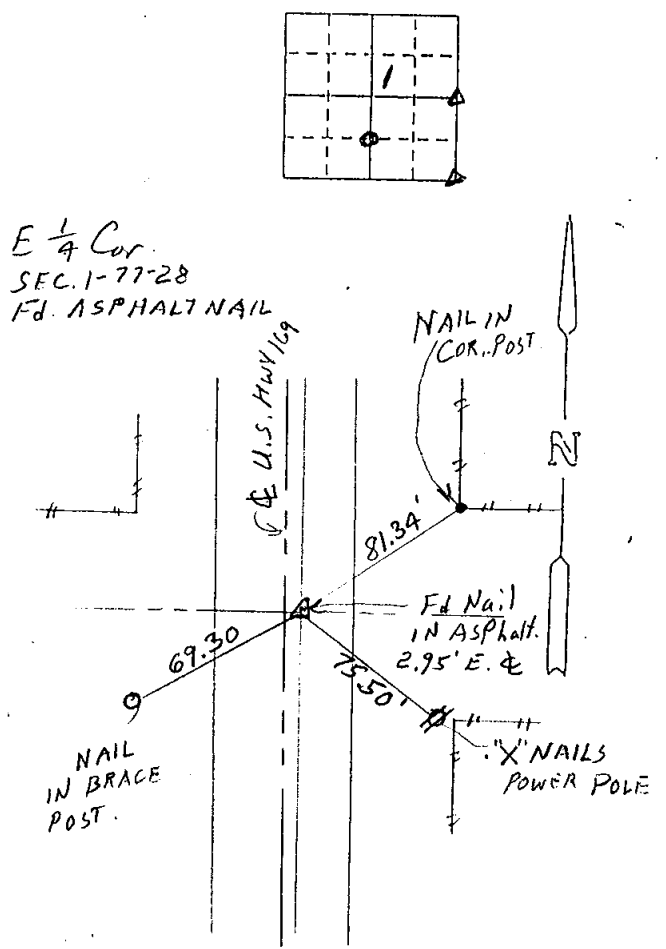
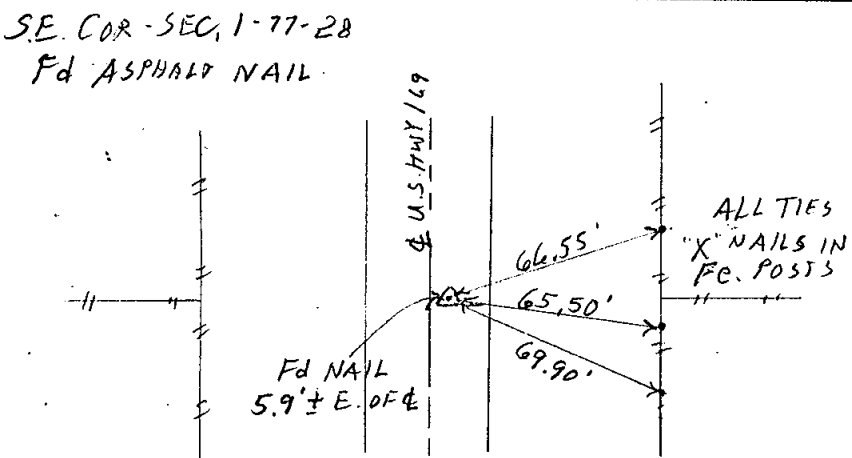
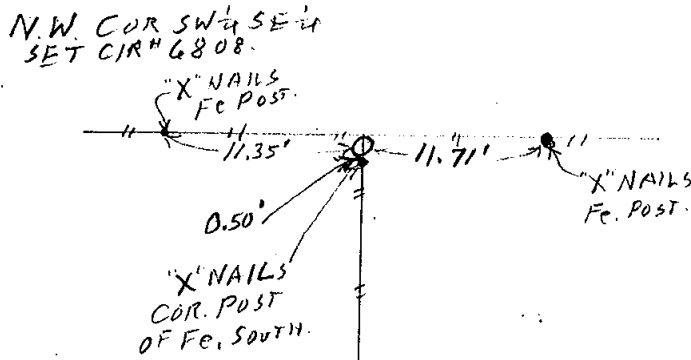
Land Survey Monuments situated in Section 1, Township 77 N, Range 28 W, of the Fifth Principal Meridian, MADISON County, Iowa. Previously recorded in _____ in County Recorder's Office.

(Show reason for preparing this certificate, the evidence and detailed procedures used in establishing the corner positions and monumentation found or placed.)

Monument Description and Remarks: NW COR SW 1/4 SE 1/4 - Set CIR # 6808 at established Fence Corner
E 1/4 Cor. - FOUND NAIL IN ASPHALT ROAD SURFACE - Ties from 1988 Plat by John Franklin LS. # 2760 reasonably close to nail indicated a lead plug in paving.

PLAN - VIEW

(Show a minimum of three reference ties to durable physical objects, relevant monuments and physical conditions that will enable recovery of the corner.)



List Corners to be Indexed

Corners	Section	Twp	Range
NW COR SW 1/4 SE 1/4	1	T 77N	R 28W
SE COR	1	T 77N	R 28W
E 1/4 Cor.	1	T 77N	R 28W

I hereby certify that this land surveying document was prepared and the related survey work was performed by me or under my direct personal supervision and that I am a duly licensed Land Surveyor under the laws of the State of Iowa.

J. M. Hochstetler
J.M. HOCHSTETLER
License number 6808 Date 2/1/01
My license renewal date is December 31, 2001
Pages or sheets covered by this seal: 1

