

REC \$ 5.00
AUD \$ _____
R.M.F. \$ 1.00

COMPUTER
RECORDED
COMPARED _____

MICKI UTSLER
RECORDER
MADISON COUNTY, IOWA

VANCE & HOCHSTETLER, P.C., CONSULTING ENGINEERS, WINTERSSET, IOWA (515) 462-3995
CHARLES T. VANCE, 110 West Green St., Winterset, Iowa, 50273
JAMES M HOCHSTETLER, 110 West Green St., Winterset, Iowa 50273

UNITED STATES PUBLIC LAND SURVEY CORNER CERTIFICATE

OF
Land Survey Monuments situated in Section 10, Township 77 North, Range
26 West, of the Fifth Principal Meridian, Madison County, Iowa.
Previously recorded in _____ in County Recorder's Office.
(book, page, document number, etc.)

(Show reason for preparing this certificate, the evidence and detailed procedures used in establishing the the corner positions and monumentation found or placed.)

Monument Description and Remarks:

Center - Set Capped Iron Rod #6808 (1/2" rebar, "deep), at center
of "T" intersection
W. 1/4 cor. - Set C.I.R. #6808 (1/2" rebar, 2" deep) 20' North of
old S. road R.O.W. fence (road was originally 40' centered
on 1/4-1/4 line), in line with property line fence to the
North.

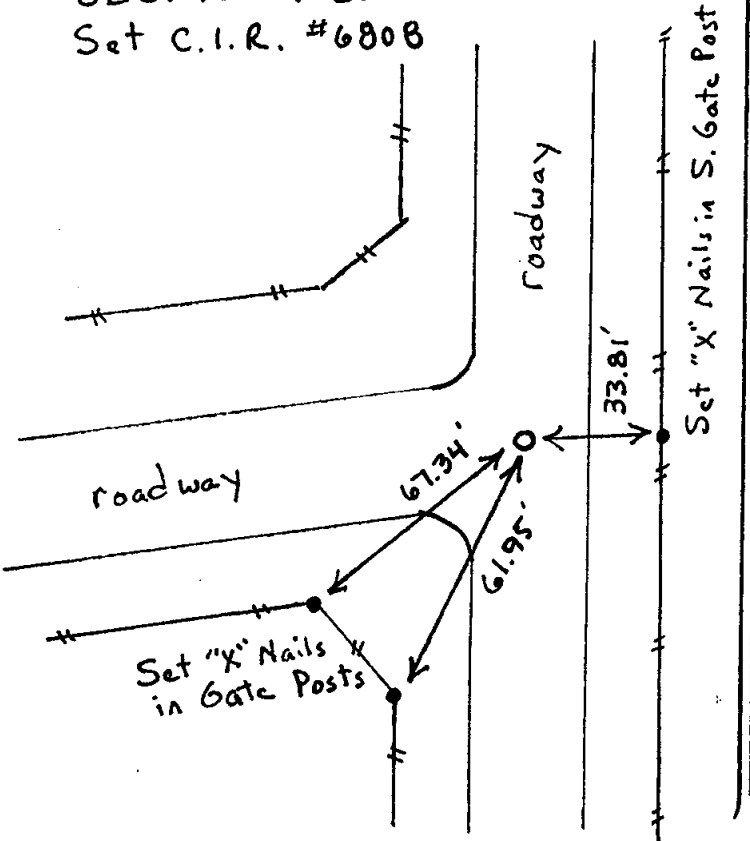
PLAN - VIEW

(Show a minimum of three reference ties to durable physical objects, relevant monuments and physical conditions that will enable recovery of the corner.)

CENTER

SEC. 10-77-26

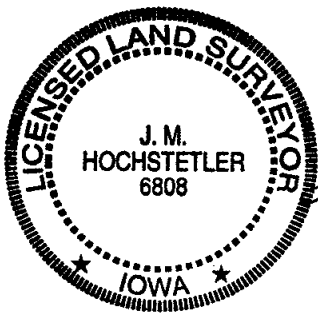
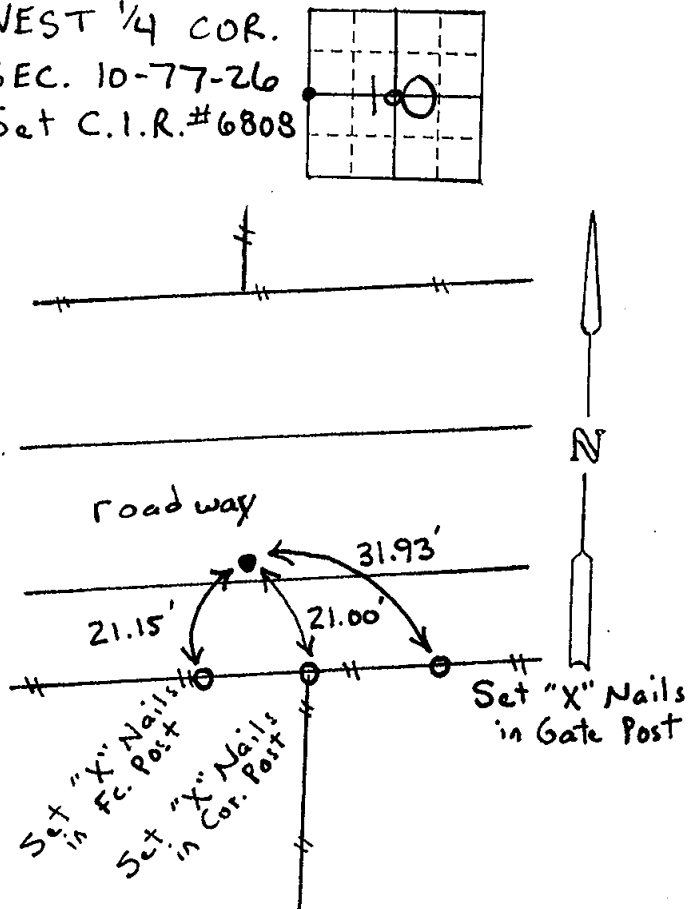
Set C.I.R. #6808



WEST 1/4 COR.

SEC. 10-77-26

Set C.I.R. #6808



I hereby certify that this land surveying document was prepared and the related survey work was performed by me or under my direct personal supervision and that I am a duly licensed Land Surveyor under the laws of the State of Iowa.

J. M. Hochstetler
J. M. HOCHSTETLER
License number 6808 Date 2/27/01
My license renewal date is December 31, 2001
Pages or sheets covered by this seal: 1

List Corners to be Indexed

Corners	Section	Twp	Range
Center	10	77 N	26 W
W. 1/4 cor.	10	77 N	26 W