

REC \$ 5.00  
AUD \$ 1.00  
R.M.F. \$ 1.00

COMPUTER ✓  
RECORDED ✓  
COMPARED \_\_\_\_\_

MICKI UTSLER  
RECORDER  
MADISON COUNTY, IOWA

VANCE & HOCHSTETLER, P.C., CONSULTING ENGINEERS, WINTERSET, IOWA (515) 462-3995  
CHARLES T. VANCE, 110 West Green St., Winterset, Iowa, 50273  
JAMES M HOCHSTETLER, 110 West Green St., Winterset, Iowa 50273

UNITED STATES PUBLIC LAND SURVEY CORNER CERTIFICATE

Land Survey Monuments situated in Section 10 OF 10, Township 77 North, Range 26 West, of the Fifth Principal Meridian, Madison County, Iowa.  
Previously recorded in \_\_\_\_\_ in County Recorder's Office.

(book, page, document number, etc.)

(Show reason for preparing this certificate, the evidence and detailed procedures used in establishing the the corner positions and monumentation found or placed.)

Monument Description and Remarks:

SE cor. SW. 1/4 NW. 1/4 - Set Capped Iron Rod #6808 (1/2" rebar, 2" deep)  
on line between W. 1/4 cor. & Center in line with fence to North.  
NE cor. SW. 1/4 NW. 1/4 - Set C.I.R. #6808 (1/2" rebar, exposed) at  
existing 3-way fence corner.

PLAN - VIEW

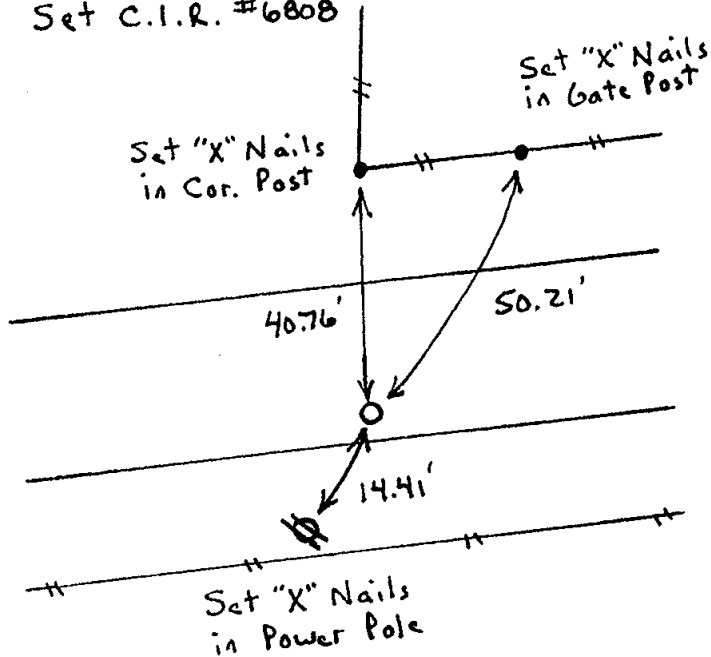
(Show a minimum of three reference ties to durable physical objects, relevant monuments and physical conditions that will enable recovery of the corner.)

SE CORNER

SW. 1/4 NW. 1/4

SEC. 10-77-26

Set C.I.R. #6808

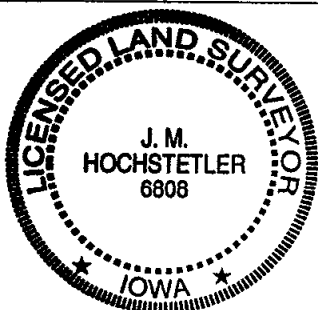
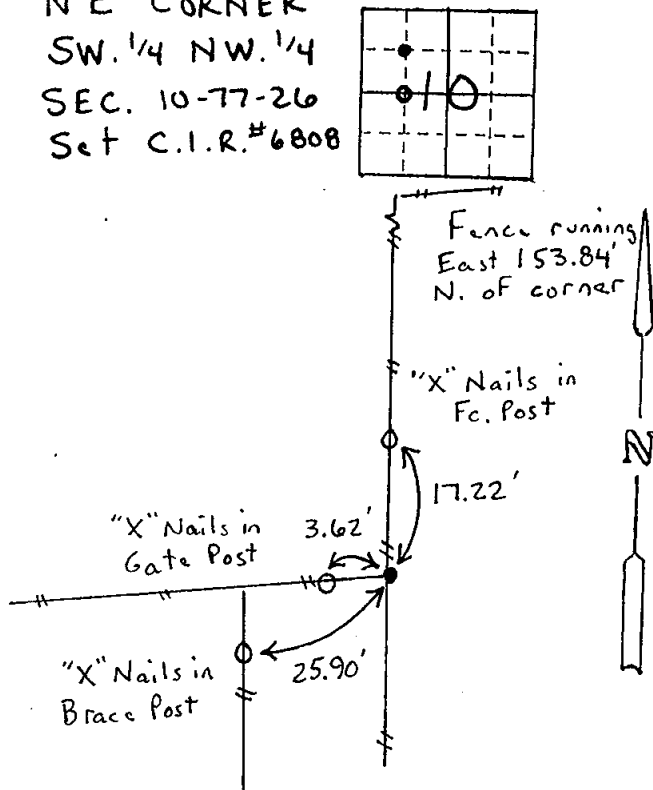


NE CORNER

SW. 1/4 NW. 1/4

SEC. 10-77-26

Set C.I.R. #6808



I hereby certify that this land surveying document was prepared and the related survey work was performed by me or under my direct personal supervision and that I am a duly licensed Land Surveyor under the laws of the State of Iowa.

J.M. Hochstetler  
J.M. HOCHSTETLER

License number 6808 Date 2/28/01

My license renewal date is December 31, 2001

Pages or sheets covered by this work: 1

List Corners to be Indexed

Corners	Section	Twp	Range
SE cor.	10	77N	26W
SW. 1/4 NW. 1/4			
NE cor.	10	77N	26W
SW. 1/4 NW. 1/4			