

REC \$ 5.00
 AUD \$ _____
 R.M.F. \$ 1.00

COMPUTER
 RECORDED
 COMPARED _____

FILED NO. 007613
 BOOK 2 PAGE 193
 2000 DEC 20 PM 2:34

MICKI UTSLER
 RECORDER
 MADISON COUNTY, IOWA.

VANCE & HOCHSTETLER, P.C., CONSULTING ENGINEERS, WINTerset, IOWA (515) 462-3995
 CHARLES T. VANCE, 110 West Green St., Winterset, Iowa, 50273
 JAMES M HOCHSTETLER, 110 West Green St., Winterset, Iowa 50273

UNITED STATES PUBLIC LAND SURVEY CORNER CERTIFICATE

Land Survey Monuments situated in Section OF 33 Township 76 N. Range 26 W.
 of the Fifth Principal Meridian, MADISON County, Iowa.
 Previously recorded in _____ in County Recorder's Office.
 (book, page, document number, etc.)

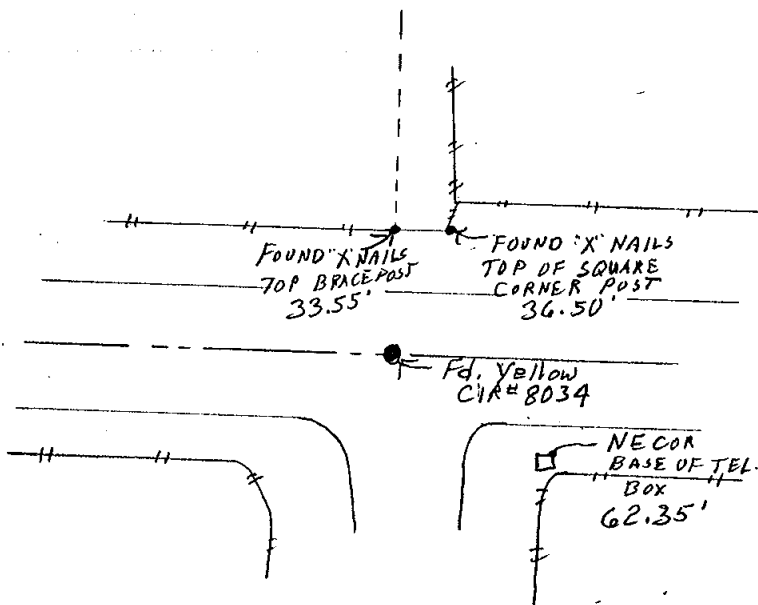
(Show reason for preparing this certificate, the evidence and detailed procedures used in establishing the corner positions and monumentation found or placed.)

Monument Description and Remarks: SE COR SW 1/4 SW 1/4 - Found CIR #8034 set by Cleo McCall for survey in 1983. McCall's notes indicate CIR set on Found. Ghd spike.
NE COR SW 1/4 SW 1/4 - set CIR #6808 at old property line fence corner.

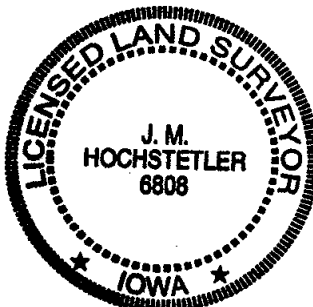
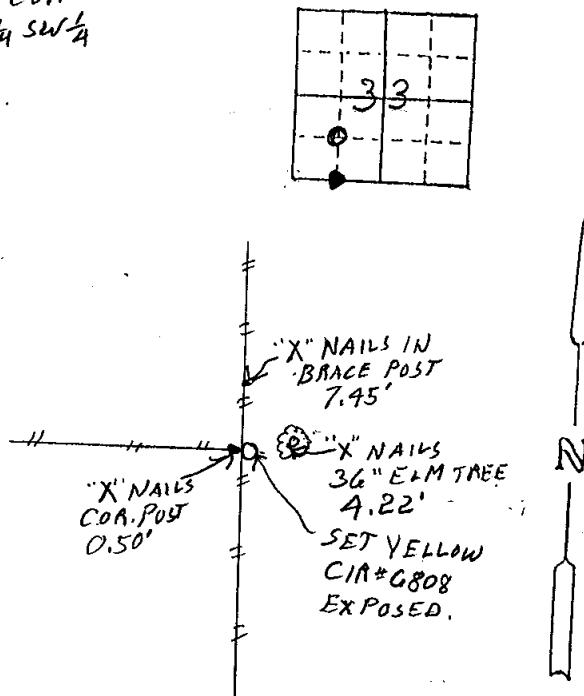
PLAN - VIEW

(Show a minimum of three reference ties to durable physical objects, relevant monuments and physical conditions that will enable recovery of the corner.)

S.E. COR
 SW 1/4 SW 1/4



NE COR.
 SW 1/4 SW 1/4



I hereby certify that this land surveying document was prepared and the related survey work was performed by me or under my direct personal supervision and that I am a duly licensed Land Surveyor under the laws of the State of Iowa.
J. M. Hochstetler
 J. M. HOCHSTETLER
 License number 6808 Date 12/14/2000
 My license renewal date is December 31, 2001
 Pages or sheets covered by this seal: 1

List Corners to be Indexed

Corners	Section	Twp	Range
SE COR, SW 1/4 SW 1/4	33	76N	26W
NE COR SW 1/4 SW 1/4	33	76N	26W

1950
1951
1952
1953

