

REC \$ 5⁰⁰
 AUD \$ _____
 R.M.F. \$ 1⁰⁰

COMPUTER
 RECORDED
 COMPARED _____

FILED NO. 007612
 BOOK 2 PAGE 192
 2000 DEC 20 PM 2:33

MICKI UTSLER
 RECORDER
 MADISON COUNTY, IOWA
 (515) 462-3995

✓ VANCE & HOCHSTETLER, P.C., CONSULTING ENGINEERS, WINTERSSET, IOWA (515) 462-3995
 CHARLES T. VANCE, 110 West Green St., Winterset, Iowa, 50273
 JAMES M HOCHSTETLER, 110 West Green St., Winterset, Iowa 50273

UNITED STATES PUBLIC LAND SURVEY CORNER CERTIFICATE

OF
 Land Survey Monuments situated in Section 17, Township 74 North, Range
28 West, of the Fifth Principal Meridian, MADISON County, Iowa.
 Previously recorded in _____ in County Recorder's Office.
 (book, page, document number, etc.)

(Show reason for preparing this certificate, the evidence and detailed procedures used in establishing the corner positions and monumentation found or placed.)

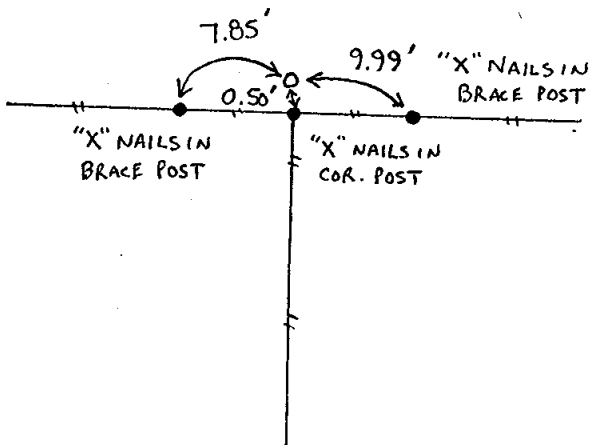
Monument Description and Remarks:

South 1/4 cor. - Fd. Capped Iron Rod (C.I.R.) #6808 (1/2" rebar,
set in 1990.
SW cor. - Fd. 1/2" Iron Pin (shown as "found pin" on County Road plans
from 1966), 4" deep.

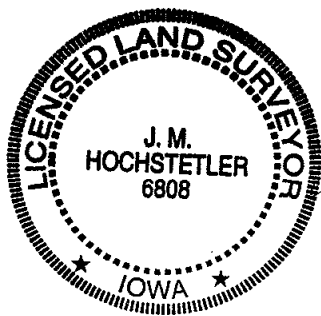
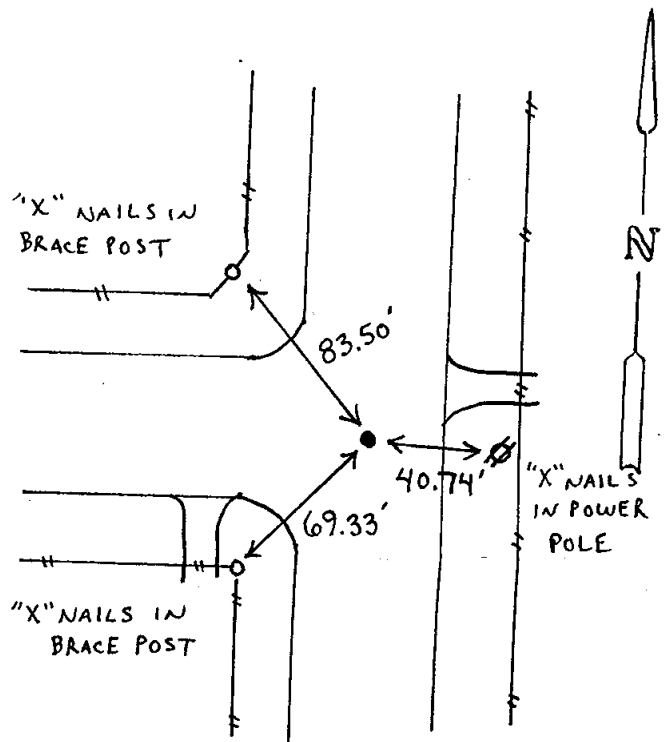
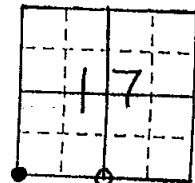
PLAN - VIEW

(Show a minimum of three reference ties to durable physical objects, relevant monuments and physical conditions that will enable recovery of the corner.)

SOUTH 1/4 COR.
 SEC. 17-74-28
 Fd. C.I.R. # 5041



SW CORNER
 SEC. 17-74-28
 Fd. 1/2" Iron Pin



I hereby certify that this land surveying document was prepared and the related survey work was performed by me or under my direct personal supervision and that I am a duly licensed Land Surveyor under the laws of the State of Iowa.

J. M. Hochstetler
 J. M. HOCHSTETLER

License number 6808 Date 12/12/2000

My license renewal date is December 31, 2001

Pages or sheets covered by this work: 1

List Corners to be Indexed

Corners	Section	Twp	Range
S. 1/4 cor.	17	74N	28W
SW cor.	17	74N	28W

REC-3
SER-3
NOV-3

