

REC \$ 5.00
 AUD \$ _____
 R.M.F. \$ 1.00

COMPUTER
 RECORDED
 COMPARED _____

FILED NO. 007199
 BOOK 2 PAGE 186
 2000 NOV 28 PM 1:06

MICKI UTSLER
 RECORDER
 MADISON COUNTY, IOWA

VANCE & HOCHSTETLER, P.C., CONSULTING ENGINEERS, WINTERSSET, IOWA (515) 462-3995
 CHARLES T. VANCE, 110 West Green St., Winterset, Iowa, 50273
 JAMES M HOCHSTETLER, 110 West Green St., Winterset, Iowa 50273

UNITED STATES PUBLIC LAND SURVEY CORNER CERTIFICATE

Land Survey Monuments situated in Section 6 OF 6, Township 76 N, Range 29 W, of the Fifth Principal Meridian, MADISON County, Iowa.
 Previously recorded in _____ in County Recorder's Office.
 (book, page, document number, etc.)

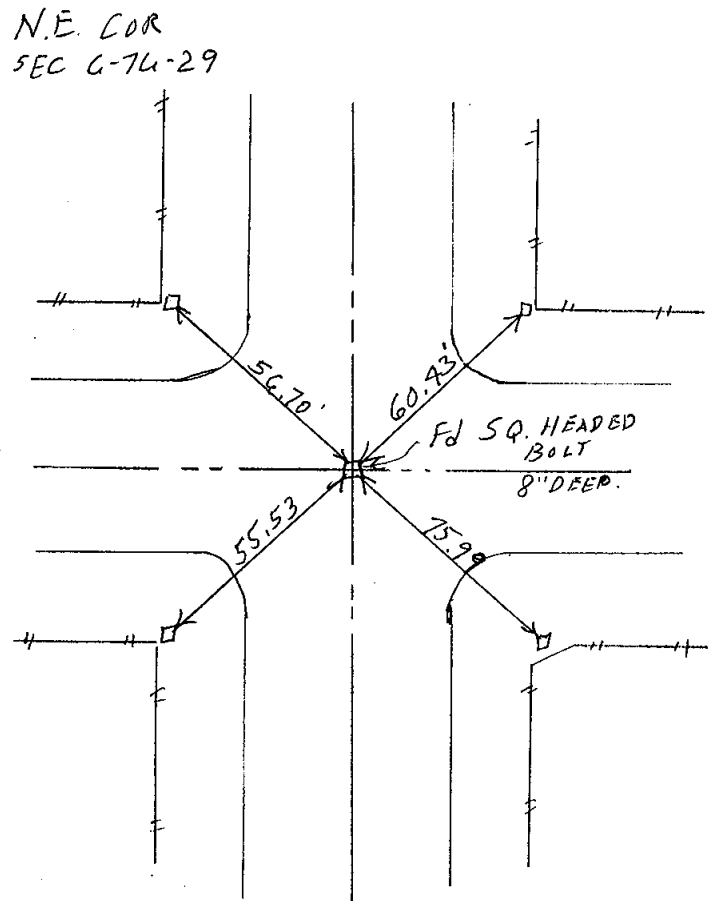
(Show reason for preparing this certificate, the evidence and detailed procedures used in establishing the the corner positions and monumentation found or placed.)

Monument Description and Remarks: N.E. COR. - Found 1/2" Square-headed bolt previously tied by County Engineer's office, approximately 8" deep.

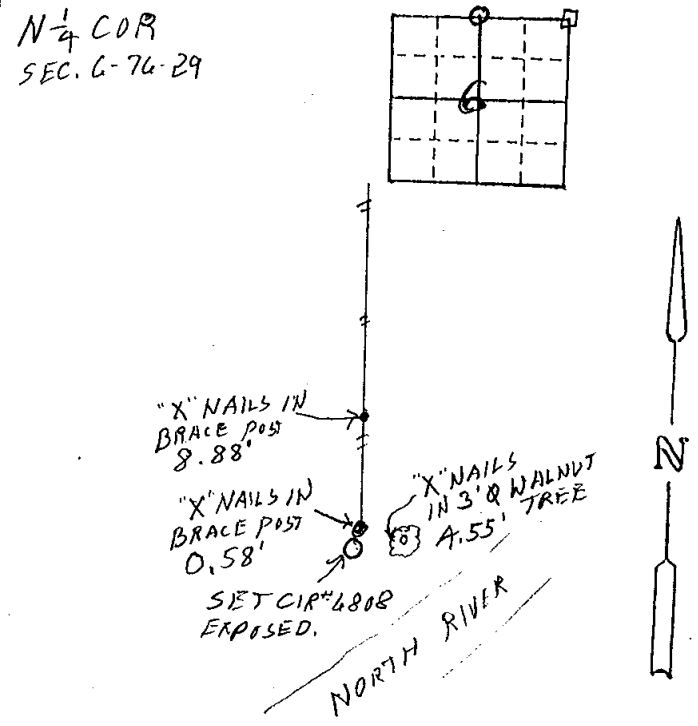
N 1/4 Cor. - Set CIR #6808 in line with old property line fence from the North and projection of County Road centerline along the N. Line of NE 1/4 NE 1/4.

PLAN - VIEW

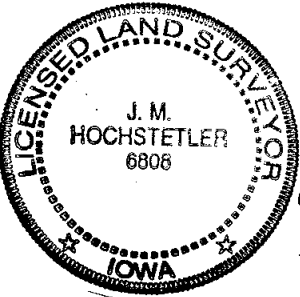
(Show a minimum of three reference ties to durable physical objects, relevant monuments and physical conditions that will enable recovery of the corner.)



N 1/4 COR
 SEC. 6-76-29



All TIES TO "X" IN GRADER BLADE.



I hereby certify that this land surveying document was prepared and the related survey work was performed by me or under my direct personal supervision and that I am a duly licensed Land Surveyor under the laws of the State of Iowa.
J. M. Hochstetler
 J. M. HOCHSTETLER
 License number 6808 Date 11/14/2000
 My license renewal date is December 31, 2001
 Pages or sheets covered by this seal: _____

List Corners to be Indexed

Corners	Section	Twp	Range
NE COR.	6	76 N	29 W
N 1/4 COR.	6	76 N	29 W