

REC \$ 5⁰⁰
AUD \$
R.M.F. \$ 1⁰⁰

COMPUTER
RECORDED
COMPARED

MICKI UTSLER
RECORDER
MADISON COUNTY, IOWA

VANCE & HOCHSTETLER, P.C., CONSULTING ENGINEERS, WINTERSET, IOWA (515) 462-3995
CHARLES T. VANCE, 110 West Green St., Winterset, Iowa, 50273
JAMES M HOCHSTETLER, 110 West Green St., Winterset, Iowa 50273

UNITED STATES PUBLIC LAND SURVEY CORNER CERTIFICATE

Land Survey Monuments situated in Section 32 OF 74 N Township, Range 28 W, of the Fifth Principal Meridian, MADISON County, Iowa.
Previously recorded in _____ in County Recorder's Office.
(book, page, document number, etc.)

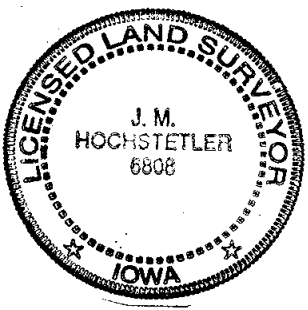
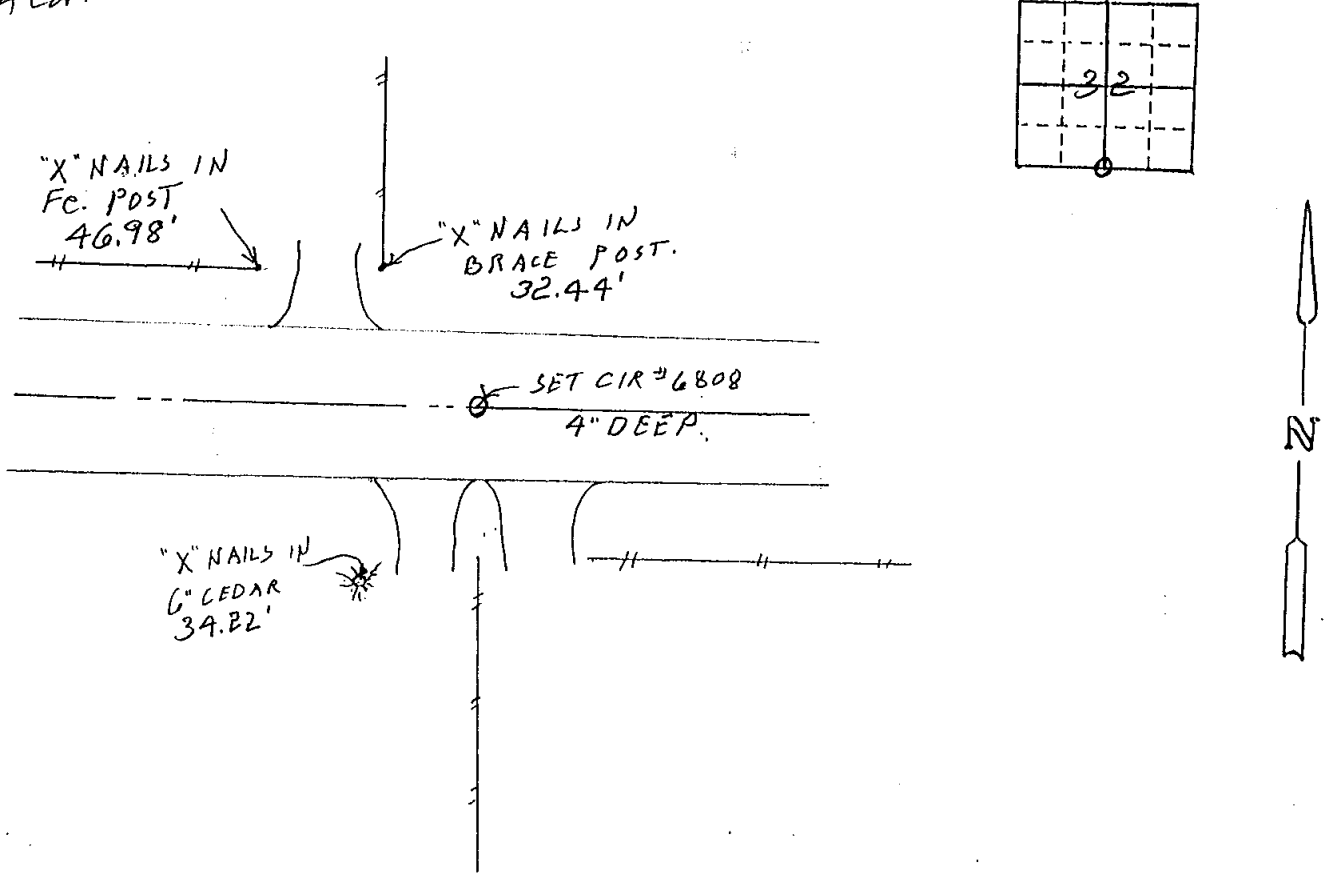
(Show reason for preparing this certificate, the evidence and detailed procedures used in establishing the the corner positions and monumentation found or placed.)

Monument Description and Remarks: S 1/4 Corner - Set yellow cap # 6808 on 1/2" Iron Rod - 4" Deep based on split of County road right-of-way fences in line with old property line fence to South. Point was East of property line fence to North but measurements of existing fences at 1/4 1/4 lines indicate the fence to South is better evidence of corner. Corner set for survey in Union County.

PLAN - VIEW

(Show a minimum of three reference ties to durable physical objects, relevant monuments and physical conditions that will enable recovery of the corner.)

S 1/4 Cor.



I hereby certify that this land surveying document was prepared and the related survey work was performed by me or under my direct personal supervision and that I am a duly licensed Land Surveyor under the laws of the State of Iowa.
J. M. Hochstetler
J. M. HOCHSTETLER
License number 6808 Date 11/9/2000
My license renewal date is December 31, 2001
Pages or sheets covered by this seal: 1

List Corners to be Indexed

Corners	Section	Twp	Range
S 1/4	32	74	28