

REC \$ 5⁰⁰
AUD \$ _____
R.M.F. \$ 1⁰⁰

COMPUTER
RECORDED
COMPARED _____

MICKI UTSLER
RECORDER
MADISON COUNTY, IOWA
PH: (515) 276-0467

PREPARED BY: JOEL R. ROMEY 3501 104th STREET URBANDALE IOWA 50322

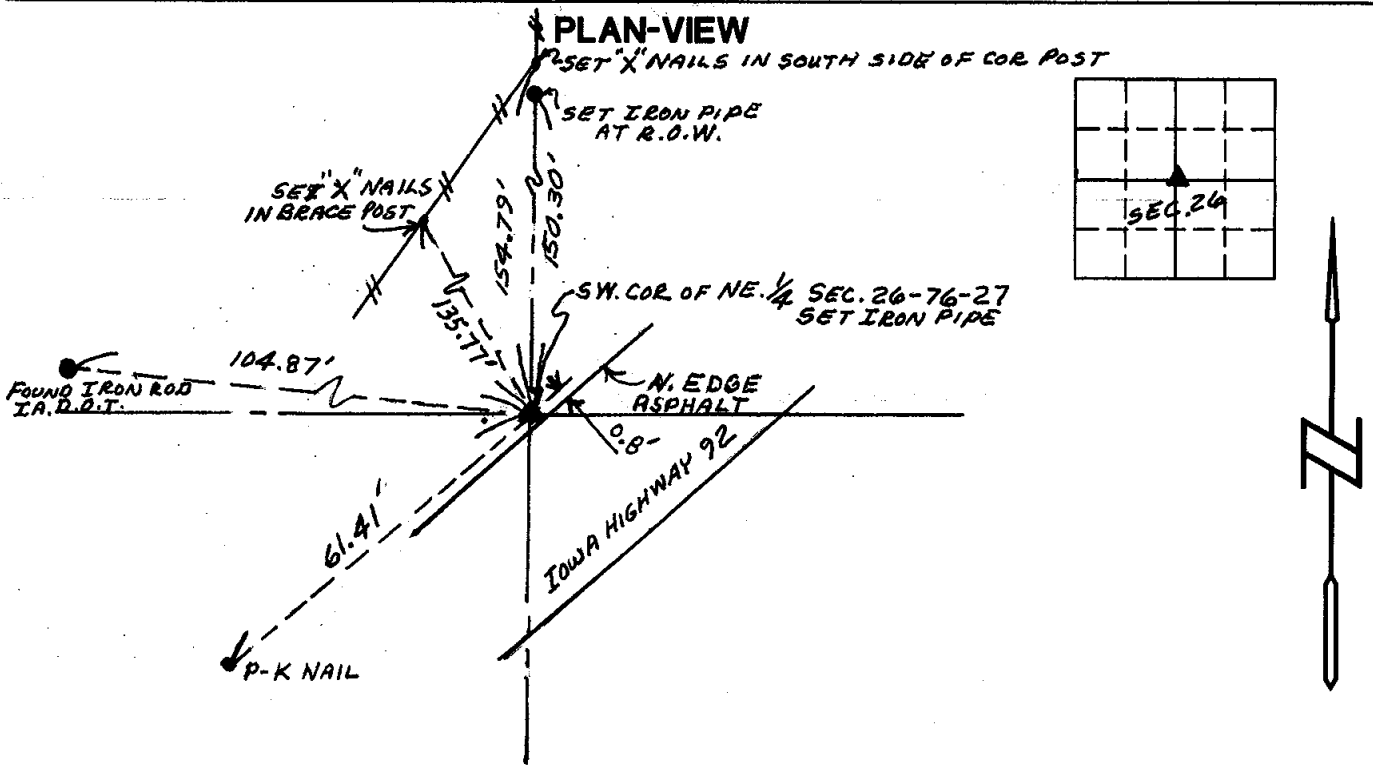
UNITED STATES PUBLIC LAND SURVEY CORNER CERTIFICATE OF

Land Survey Monuments situated in Section 26, Township 76, Range 27, of the Fifth Principal Meridian, MADISON County, Iowa. Previously recorded in Book _____, Page _____.

(Show reason for preparing this certificate, the evidence and detailed procedures used in establishing the corner positions and monumentation found or placed).

Monument Description and Remarks:

The SW Corner of the NE 1/4 of Section 26-76-27 was re-established using the same monumentation found or placed by J.M. Hochstetler on a survey Dated April 18, 1997 and Recorded April 23, 1997 in Plat Book 2, Page 773 in the Records of the Madison County Recorder. This corner was removed during the construction and relocation of Highway 92, Bishop Engineering Company Survey, Drawing No. 00-141 for Parcel "F" of Parcel "C" was completed November 22, 2000 and Recorded December 29, 2000 in Plat Book 3, Page 665 showing the new corner.

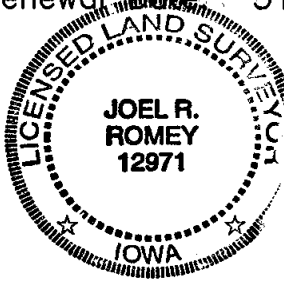


I hereby certify that the survey work was completed and this certificate was prepared by me or under my direct personal supervision and that I am a duly licensed land surveyor under the laws of the state of Iowa.

Joel R. Romey

Licensed Land Surveyor No. 12971
License Renewal Date: 31 Dec. 2001

SEAL



List Corners to be indexed

Corners	Section	Twp	Range
SW COR. OF NE 1/4	26	76	27