

FILED NO. 006691

BOOK 2 PAGE 181

2000 OCT 26 AM 10:07

REC \$ 5.00  
AUD \$ 1.00  
R.M.F. \$ 1.00

COMPUTER   
RECORDED   
COMPARED \_\_\_\_\_

MICKI UTSLER  
RECORDER  
MADISON COUNTY, IOWA

VANCE & HOCHSTETLER, P.C., CONSULTING ENGINEERS, WINTERSSET, IOWA (515) 462-3995  
CHARLES T. VANCE, 110 West Green St., Winterset, Iowa, 50273  
JAMES M HOCHSTETLER, 110 West Green St., Winterset, Iowa 50273

UNITED STATES PUBLIC LAND SURVEY CORNER CERTIFICATE

Land Survey Monuments situated in Section 2 OF 2 Township 77 North, Range 27 West, of the Fifth Principal Meridian, MADISON County, Iowa.  
Previously recorded in \_\_\_\_\_ in County Recorder's Office.  
(book, page, document number, etc.)

(Show reason for preparing this certificate, the evidence and detailed procedures used in establishing the the corner positions and monumentation found or placed.)

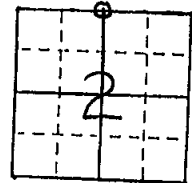
Monument Description and Remarks:

N. 1/4 cor. - Fd. 1/2" Iron Rod (3" deep) previously referenced by the Madison County Engineer's Office

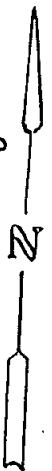
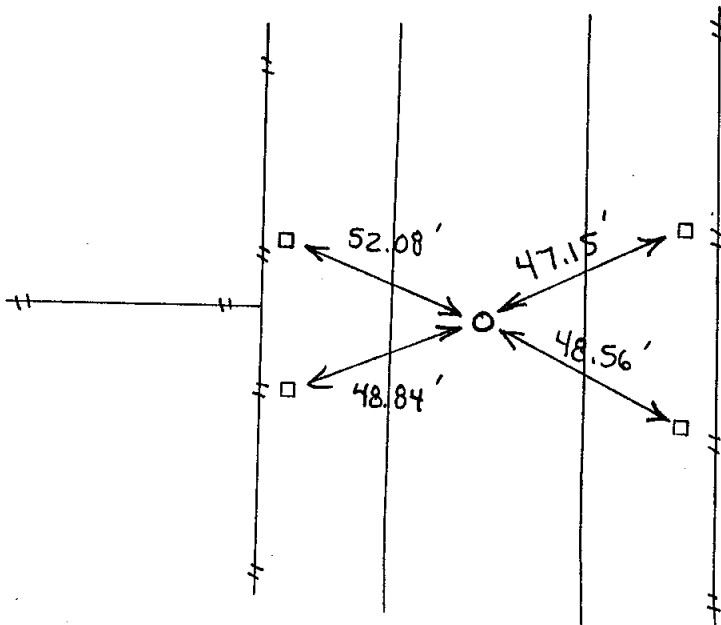
PLAN - VIEW

(Show a minimum of three reference ties to durable physical objects, relevant monuments and physical conditions that will enable recovery of the corner.)

NORTH 1/4 COR.  
SEC. 2-77-27  
Fd. 1/2" Iron Rod



NOTE: All ties are to grader blades found with yellow steel posts marking their location.



I hereby certify that this land surveying document was prepared and the related survey work was performed by me or under my direct personal supervision and that I am a duly licensed Land Surveyor under the laws of the State of Iowa.

J.M. Hochstetler  
J.M. HOCHSTETLER

License number 6808 Date 10/20/2000

My license renewal date is December 31, 2001

Pages or sheets covered by this seal: 1

List Corners to be Indexed

Corners	Section	Twp	Range
N. 1/4 cor.	2	77N	27W