

REC \$ 5.00  
AUD \$ \_\_\_\_\_  
R.M.F. \$ 1.00

COMPUTER   
RECORDED   
COMPARED \_\_\_\_\_

MICKI UTSLER  
RECORDER  
MADISON COUNTY, IOWA

RETURN TO : BOLDMAN LAND SURVEYING, P.C., BOX 66, WINTERSSET, IA 50273 515-462-9242

### UNITED STATES PUBLIC LAND SURVEY CORNER CERTIFICATE

OF

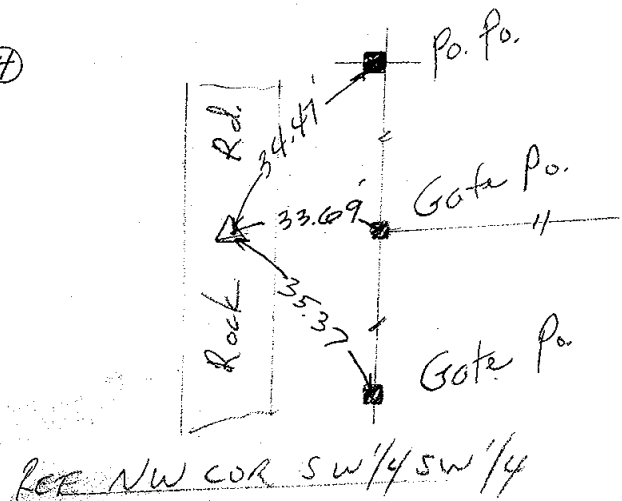
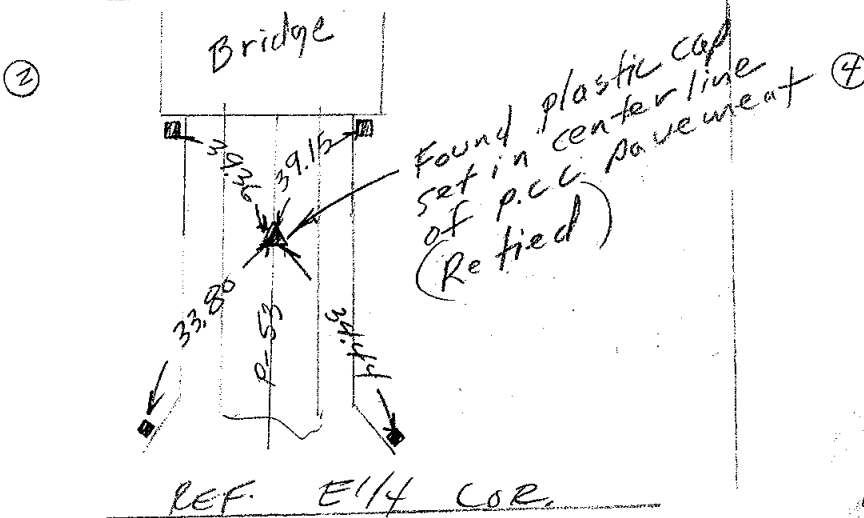
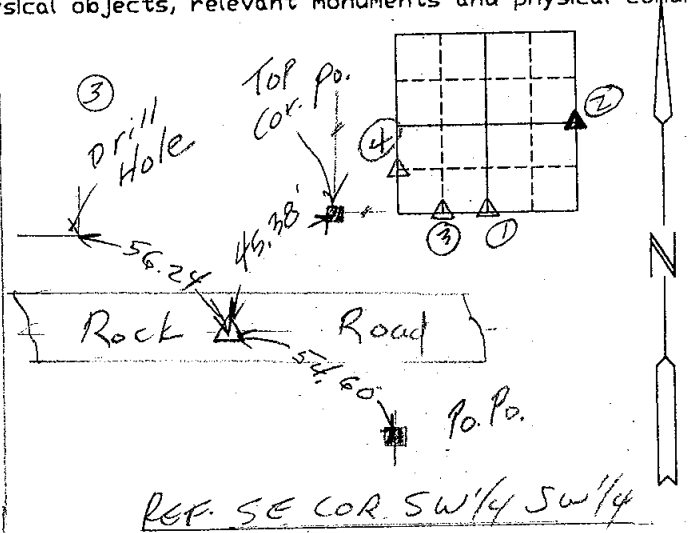
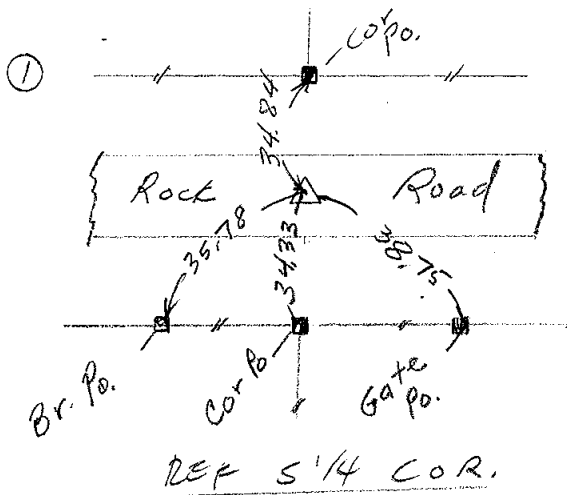
Land Survey Monuments situated in Section 16, Township 77 N., Range \_\_\_\_\_, of the Fifth Principal Meridian, Madison County, Iowa. Previously recorded in (2) Book 1 Page 214 in County Recorder's Office. (book, page, document number, etc.)

(show reason for preparing this certificate, the evidence and detailed procedures used in establishing the corner positions and monumentation found or placed.)

Monument Description and Remarks: Set 1/2" rebar orange cap #13427 from control survey of entire section using existing fences and previously established monuments. Ref. pts. all p.c. nails slope chained dist.

#### PLAN-VIEW

(Show a minimum of three reference ties to durable physical objects, relevant monuments and physical conditions that will enable recovery of the corner.)



I hereby certify that the survey work was completed and this certificate was prepared by me or under my direct personal supervision and that I am a duly Licensed Land Surveyor under the laws of the State of Iowa

Signature: Craig S. Boldman  
Craig S. Boldman

Date: 11-14-00 Reg. No. 13427

exp. 12-31-00

#### List Corners to be Indexed

Corners	Section	Twp	Range
S 1/4	16	77	29
E 1/4	16	77	29
SE COR SW 1/4 SW 1/4	16	77	29
NW COR SW 1/4 SW 1/4	16	77	29

SEAL

