

REC \$ 5⁰⁰
AUD \$
R.M.F. \$ 1⁰⁰

COMPUTER
RECORDED
COMPARED

MICKI UTSLER
RECORDER
MADISON COUNTY, IOWA

VANCE & HOCHSTETLER, P.C., CONSULTING ENGINEERS, WINTERSSET, IOWA (515) 462-3995
CHARLES T. VANCE, 110 West Green St., Winterset, Iowa, 50273
JAMES M HOCHSTETLER, 110 West Green St., Winterset, Iowa 50273

UNITED STATES PUBLIC LAND SURVEY CORNER CERTIFICATE
OF

Land Survey Monuments situated in Section 1, Township 75 N, Range 29 W, of the Fifth Principal Meridian, MADISON County, Iowa.
Previously recorded in _____ in County Recorder's Office.
(book, page, document number, etc.)

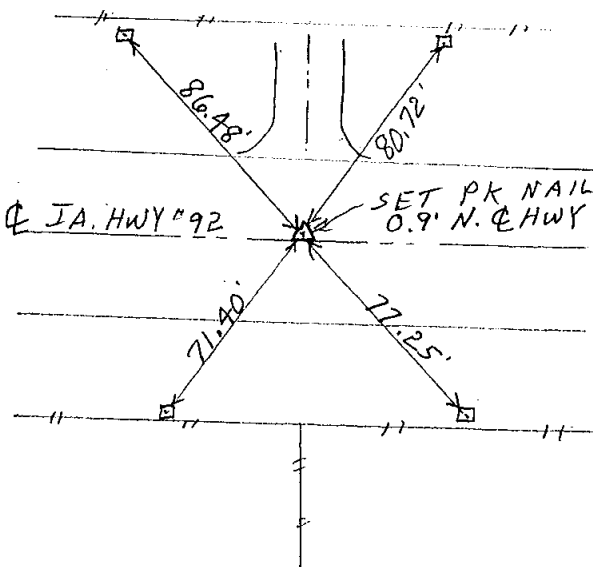
(Show reason for preparing this certificate, the evidence and detailed procedures used in establishing the the corner positions and monumentation found or placed.)

Monument Description and Remarks: N 1/4 COR. - Set P.K. Nail in Asphalt Overlay from Old Ia. D.O.T. Ties by Jespersen P.E. 4021 - We found all four concrete monuments used.
NE COR - Set P.K. Nail in Asphalt Overlay from old DOT Ties by Jespersen P.E. 4021 - We found Three of the four concrete monuments used.

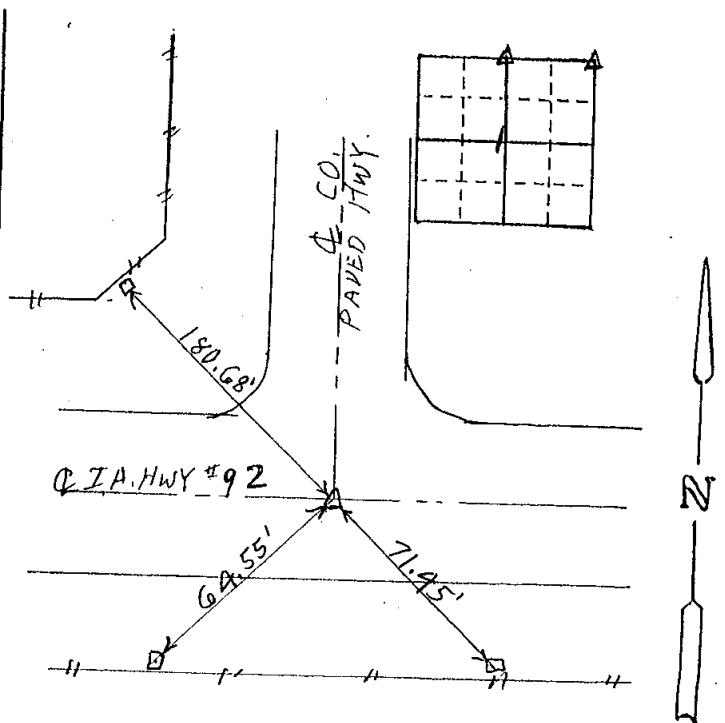
PLAN - VIEW

(Show a minimum of three reference ties to durable physical objects, relevant monuments and physical conditions that will enable recovery of the corner.)

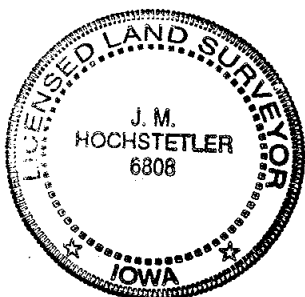
N 1/4 COR
SEC. 1-75-29



All Ties to CONCRETE MONUMENTS



All Ties to CONCRETE MONUMENTS.



I hereby certify that this land surveying document was prepared and the related survey work was performed by me or under my direct personal supervision and that I am a duly licensed Land Surveyor under the laws of the State of Iowa.

J. M. Hochstetler
J.M. HOCHSTETLER

License number 6808 Date 10/26/2000

My license renewal date is December 31, 2001

Pages or sheets covered by this seal: 1

List Corners to be Indexed

Corners	Section	Twp	Range
N 1/4 COR.	1	75	29
NE COR	1	75	29