

REC \$ 5<sup>18</sup>  
AUD \$  
R.M.F. \$ 1<sup>00</sup>

COMPUTER   
RECORDED   
COMPARED

MICKI UTSLER  
RECORDER

MADISON 515-462-0242

RETURN TO: BOLDMAN LAND SURVEYING, P.C., BOX 66, WINTERSSET, IA 50273

UNITED STATES PUBLIC LAND SURVEY CORNER CERTIFICATE  
OF

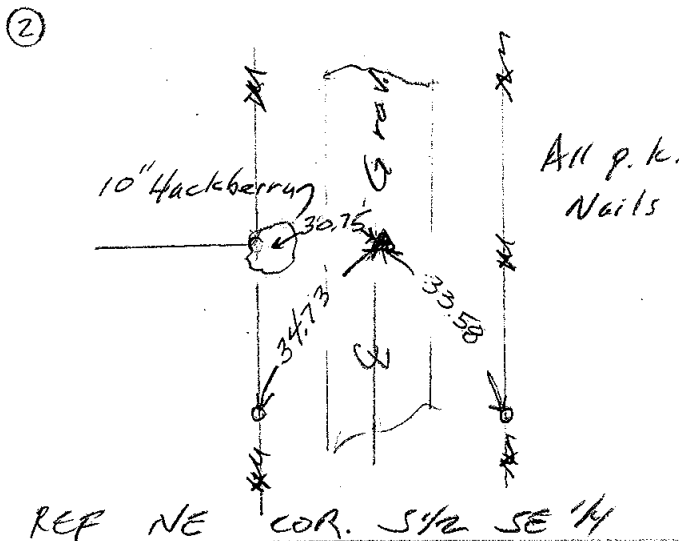
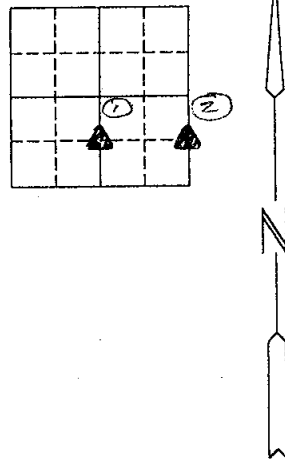
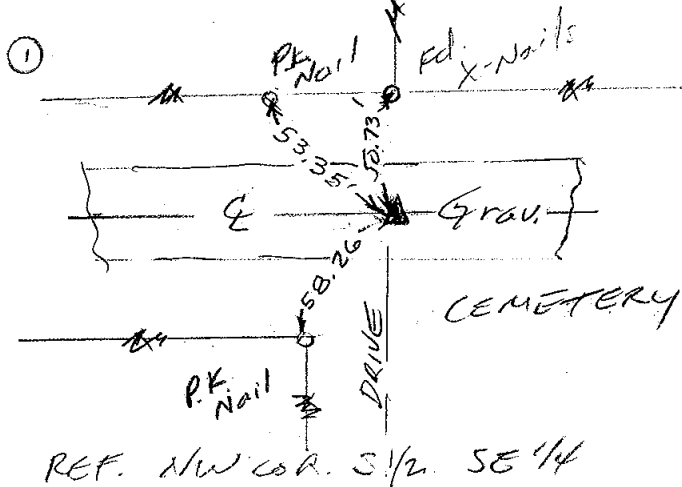
Land Survey Monuments situated in Section 21 Township 74 N. Range 26 W. of the Fifth Principal Meridian, Madison County, Iowa  
Previously recorded in Retired None recorded in County Recorder's Office.  
(book, page, document number, etc.)

(show reason for preparing this certificate, the evidence and detailed procedures used in establishing the corner positions and monumentation found or placed.)

Monument Description and Remarks: 1) Ed 1/2" pin in line with fence north used by Vance & Hochstetter in 1995 survey. 2) Set 3/8" rebar and cap at split dist between previously est. section corners.

PLAN-VIEW

(Show a minimum of three reference ties to durable physical objects, relevant monuments and physical conditions that will enable recovery of the corner.)



I hereby certify that the survey work was completed and this certificate was prepared by me or under my direct personal supervision and that I am a duly Licensed Land Surveyor under the laws of the State of Iowa

Signature: Craig S. Boldman  
Craig S. Boldman

Date: 11/7/00 Reg. No. 13427

List Corners to be Indexed

Corners Section Twp Range  
NW cor. S 1/2 SE 1/4 21-74-26  
NE cor. " " " "

SEAL

