

COMPUTER
 RECORDED
 COMPARED _____

REC \$ 5.00
 AUD \$ _____
 R.M.F. \$ 1.00

FILED NO. 005907

BOOK 2 PAGE 175

2000 SEP 11 PM 3:42

RETURN TO: BOLDMAN LAND SURVEYING, P.C., BOX 66, WINTERSET, IA 50273 RECORDER 62-9242
 MADISON COUNTY, IOWA

UNITED STATES PUBLIC LAND SURVEY CORNER CERTIFICATE

OF

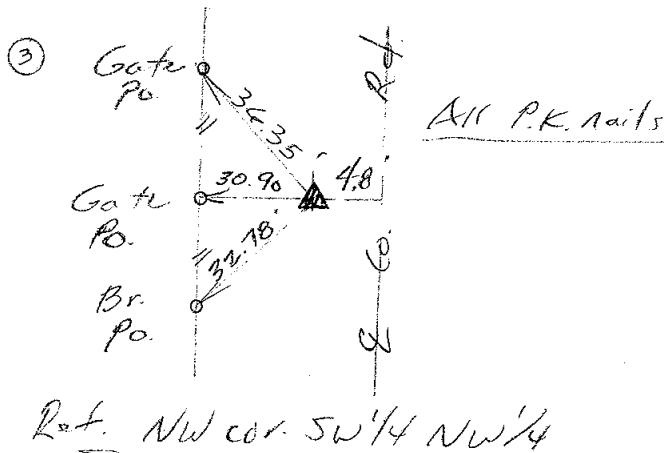
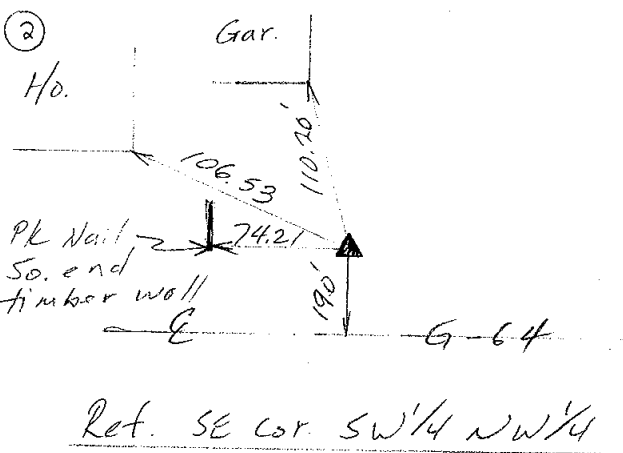
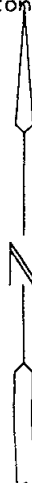
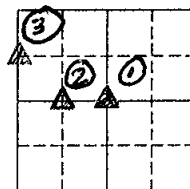
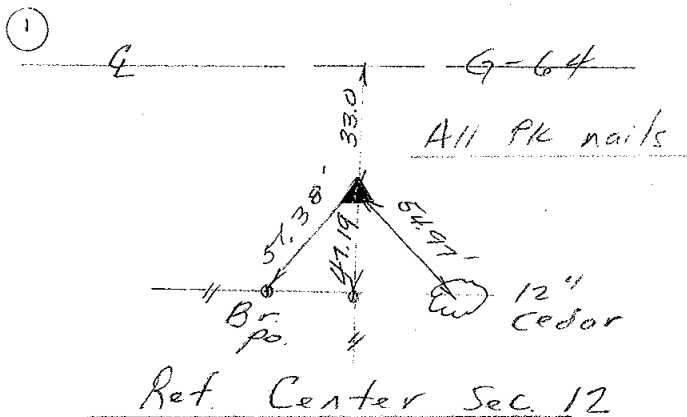
Land Survey Monuments situated in Section 12, Township 74 N., Range 26 W., of the Fifth Principal Meridian, Madison County, Iowa
 Previously recorded in None in County Recorder's Office.
 (book, page, document number, etc.)

(show reason for preparing this certificate, the evidence and detailed procedures used in establishing the corner positions and monumentation found or placed.)

Monument Description and Remarks: ① Found 1" Gas pipe in line with fence south. ② Set 5/8" rebar with cap #13427 at split between W/4 and Center. ③ Set 5/8" rebar with cap #13427 at split between NW cor. and W/4 Cor.

PLAN-VIEW

(Show a minimum of three reference ties to durable physical objects, relevant monuments and physical conditions that will enable recovery of the corner.)



I hereby certify that the survey work was completed and this certificate was prepared by me or under my direct personal supervision and that I am a duly Licensed Land Surveyor under the laws of the State of Iowa

Signature: Craig S. Boldman
 Craig S. Boldman

Date: 9/7/00 Reg. No. 13427

List Corners to be Indexed

Corners	Section	Twp	Range
Center	12	74	26
SE cor SW 1/4 NW 1/4	"	"	"
NW cor SW 1/4 NW 1/4	"	"	"

SEAL

