

FILED NO. **005906**

BOOK 2 PAGE 174

2000 SEP 11 PM 3:41

COMPUTER   
RECORDED   
COMPARED   
REC \$ 500  
AUD \$ \_\_\_\_\_  
R.M.F. \$ 100

MICKI UTSLER  
RECORDER  
MADISON COUNTY, IOWA 50270

RETURN TO: BOLDMAN LAND SURVEYING, P.C., BOX 66, WINTERSET, IA 50270

UNITED STATES PUBLIC LAND SURVEY CORNER CERTIFICATE

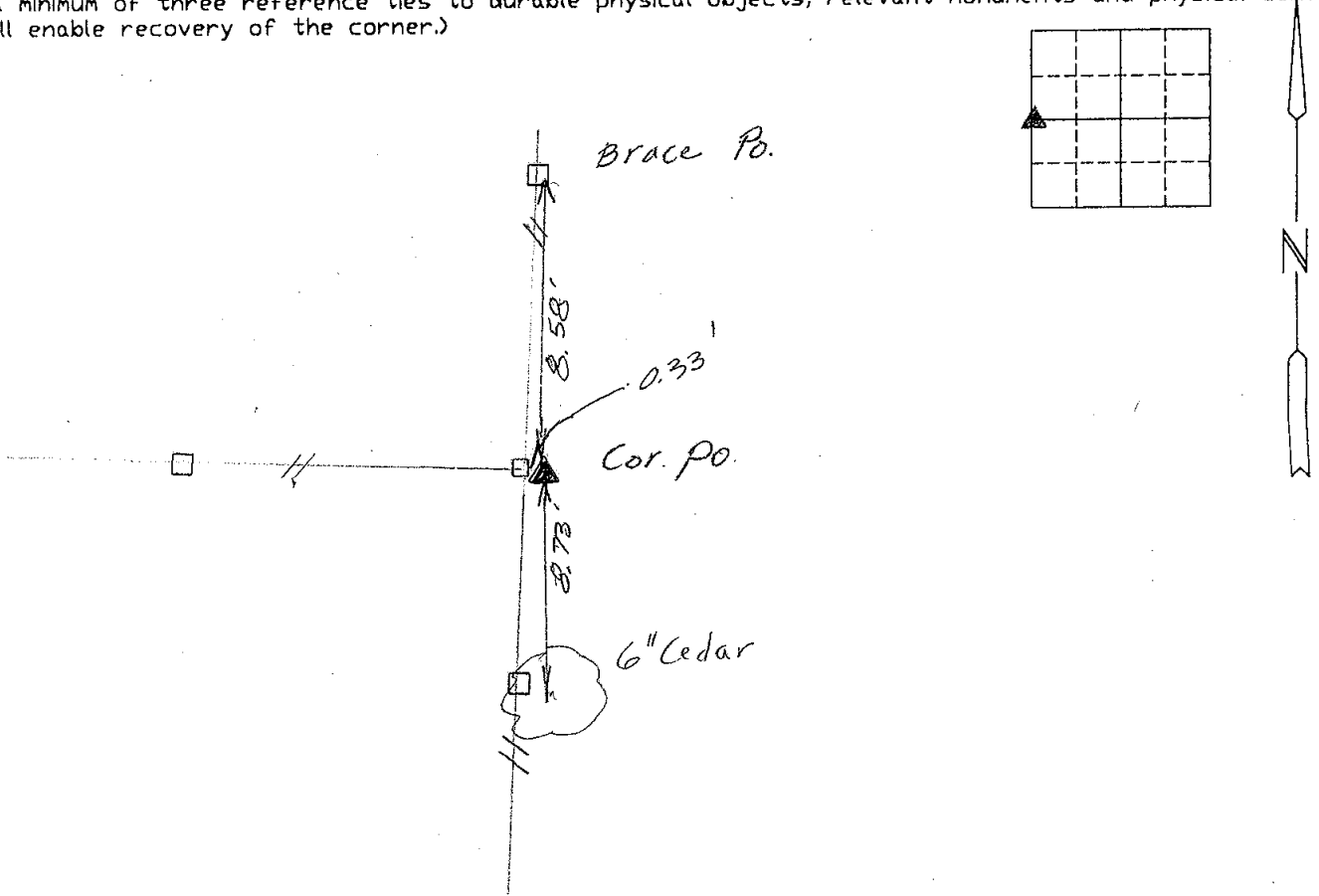
OF  
Land Survey Monuments situated in Section 23 Township 75N Range  
26W of the Fifth Principal Meridian, Madison County, Iowa  
Previously recorded in None in County Recorder's Office.  
(book, page, document number, etc.)

(show reason for preparing this certificate, the evidence and detailed procedures used in establishing the corner positions and monumentation found or placed.)

Monument Description and Remarks: Found ancient corner post.  
Set 5/8" rebar w orange cap #13427 at base  
of post.

PLAN-VIEW

(Show a minimum of three reference ties to durable physical objects, relevant monuments and physical conditions that will enable recovery of the corner.)



Ref. W/4 Corner

I hereby certify that the survey work was completed and this certificate was prepared by me or under my direct personal supervision and that I am a duly Licensed Land Surveyor under the laws of the State of Iowa

Signature: Craig S. Boldman  
Craig S. Boldman

Date: 9/7/00 Reg. No. 13427

List Corners to be Indexed

Corners	Section	Twp	Range
W/4	23	75	26

SEAL

