

FILED NO. 006202  
 BOOK 2 PAGE 179  
 2000 OCT -2 PM 3:17

REC \$ 5<sup>00</sup>  
 AUD \$ \_\_\_\_\_  
 R.M.F. \$ 1<sup>00</sup>  
 COMPUTER   
 RECORDED   
 COMPARED \_\_\_\_\_

MICKI UTSLER  
 RECORDER  
 MADISON COUNTY, IOWA

VANCE & HOCHSTETLER, P.C., CONSULTING ENGINEERS, WINTERSSET, IOWA (515) 462-3995  
 CHARLES T. VANCE, 110 West Green St., Winterset, Iowa, 50273  
 JAMES M HOCHSTETLER, 110 West Green St., Winterset, Iowa 50273

UNITED STATES PUBLIC LAND SURVEY CORNER CERTIFICATE

Land Survey Monuments situated in Section 30 OF 76 North Township, Range 26 West, of the Fifth Principal Meridian, Madison County, Iowa.  
 Previously recorded in \_\_\_\_\_ in County Recorder's Office.  
 (book, page, document number, etc.)

(Show reason for preparing this certificate, the evidence and detailed procedures used in establishing the the corner positions and monumentation found or placed.)

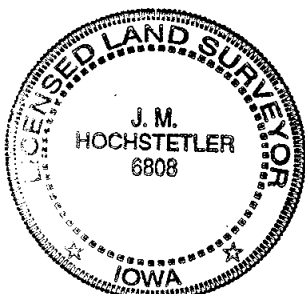
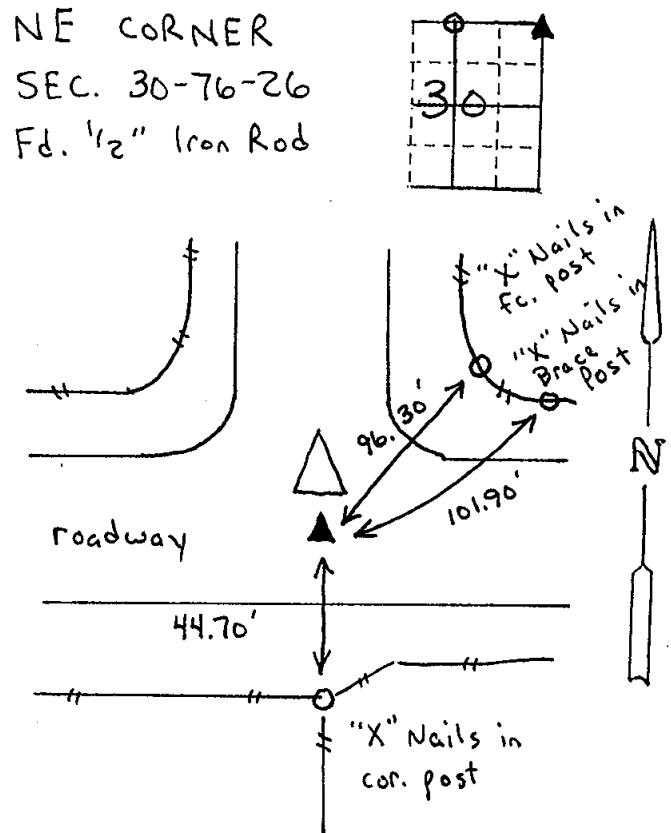
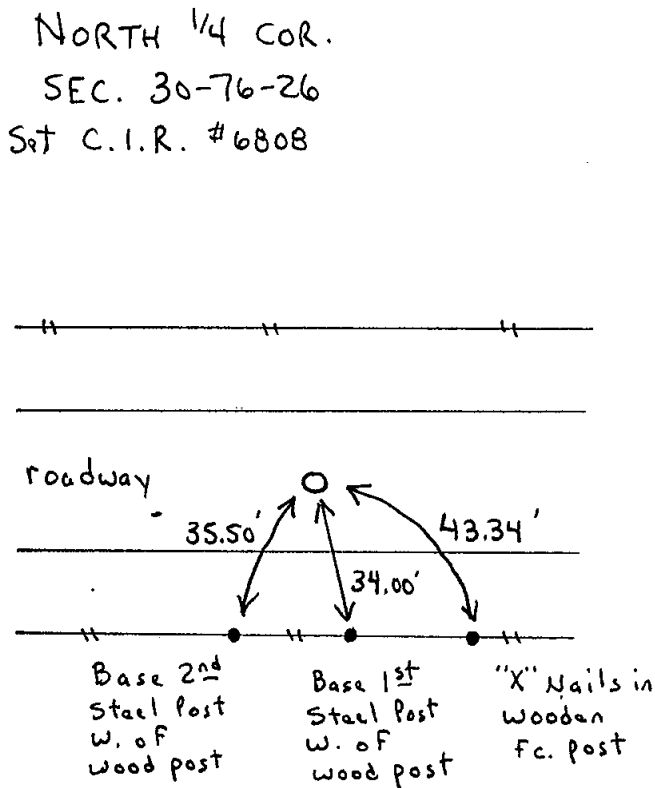
Monument Description and Remarks:

N. 1/4 cor. - Sat Capped Iron Rod (1/2" rebar, 3" deep) #6808 at the projection of a line from the NE corner through the NW cor. NE. 1/4 NE. 1/4 (found).

NE cor. - Fd. 1/2" Iron Rod (3" deep) in roadway

PLAN - VIEW

(Show a minimum of three reference ties to durable physical objects, relevant monuments and physical conditions that will enable recovery of the corner.)



I hereby certify that this land surveying document was prepared and the related survey work was performed by me or under my direct personal supervision and that I am a duly licensed Land Surveyor under the laws of the State of Iowa.

*J. M. Hochstetler*  
 J. M. HOCHSTETLER

License number 6808 Date 9/27/2000

My license renewal date is December 31, 2001

Pages or sheets covered by this seal: 1

List Corners to be Indexed

Corners	Section	Twp	Range
N. 1/4 cor.	30	76N	26W
NE cor.	30	76N	26W