

RECS 5⁰⁰
AUD \$ _____
P.M.F. \$ 1⁰⁰

COMPUTER
RECORDED
COMPARED _____

VANCE & HOCHSTETLER, P.C., CONSULTING ENGINEERS, WINTERSSET, IOWA (515) 462-3995
CHARLES T. VANCE, 110 West Green St., Winterset, Iowa, 50273
JAMES M HOCHSTETLER, 110 West Green St., Winterset, Iowa 50273

UNITED STATES PUBLIC LAND SURVEY CORNER CERTIFICATE

Land Survey Monuments situated in Section 21 OF 21, Township 77 N, Range 29 W, of the Fifth Principal Meridian, MADISON County, Iowa.
Previously recorded in _____ in County Recorder's Office.
(book, page, document number, etc.)

(Show reason for preparing this certificate, the evidence and detailed procedures used in establishing the the corner positions and monumentation found or placed.)

Monument Description and Remarks: E 1/4 Cor. - Found yellow plug in concrete set by County Engineer's Survey Crew based on previous ties to a found rebar with cap.

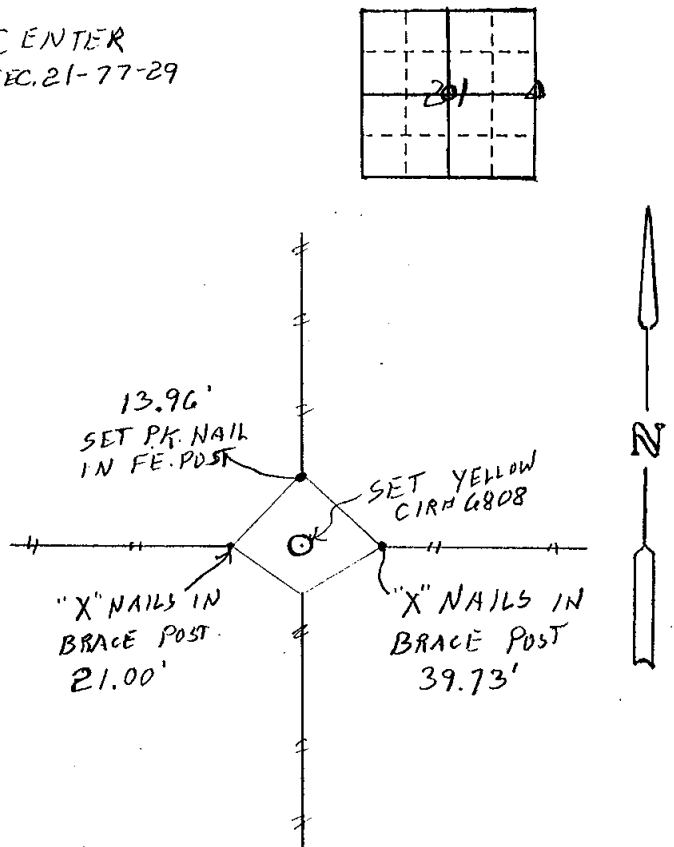
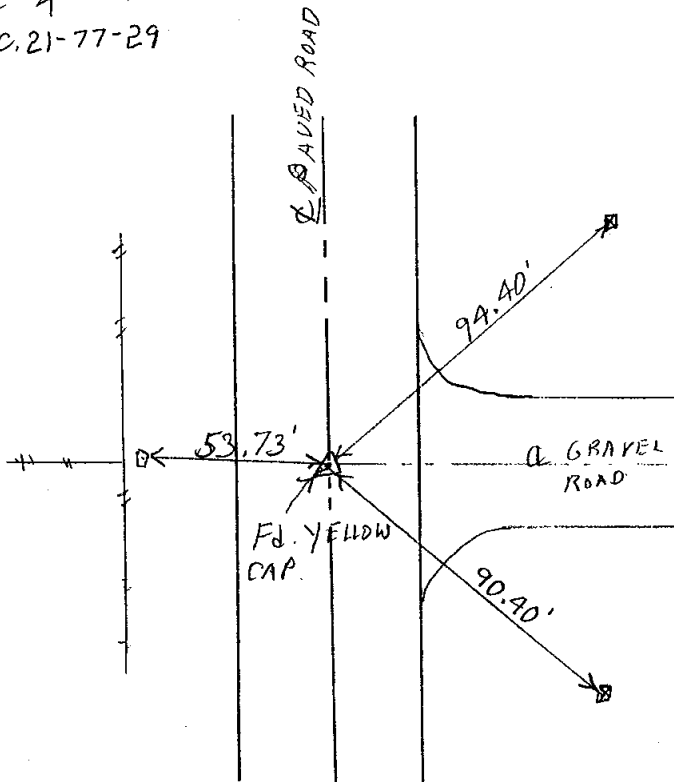
Center of Section - Set CIR "6808 based on intersection of old property line fences from all four directions.

PLAN - VIEW

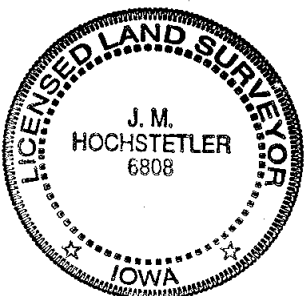
(Show a minimum of three reference ties to durable physical objects, relevant monuments and physical conditions that will enable recovery of the corner.)

E 1/4 COR.
SEC. 21-77-29

CENTER
SEC. 21-77-29



ALL TIES TO "X" ON GRADER BLADE MARKED WITH STEEL POST.



I hereby certify that this land surveying document was prepared and the related survey work was performed by me or under my direct personal supervision and that I am a duly licensed Land Surveyor under the laws of the State of Iowa.

J. M. Hochstetler
J. M. HOCHSTETLER
License number 6808 Date 7/19/2000
My license renewal date is December 31, 2001
Pages or sheets covered by this seal: 1

List Corners to be Indexed

Corners	Section	Twp	Range
E 1/4 COR	21	77N	29W
CENTER	21	77N	29W