

MICHELLE UTSLER  
RECORDER  
MADISON COUNTY, IOWA

REG. 5<sup>00</sup>  
AD. 1<sup>00</sup>  
PLANS 1<sup>00</sup>

COMPUTER ✓  
RECORDED ✓  
COMPARED \_\_\_\_\_

✓ VANCE & HOCHSTETLER, P.C., CONSULTING ENGINEERS, WINTERSET, IOWA (515) 462-3995

CHARLES T. VANCE, 110 West Green St., Winterset, Iowa, 50273  
JAMES M HOCHSTETLER, 110 West Green St., Winterset, Iowa 50273

UNITED STATES PUBLIC LAND SURVEY CORNER CERTIFICATE

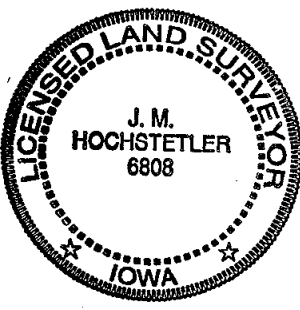
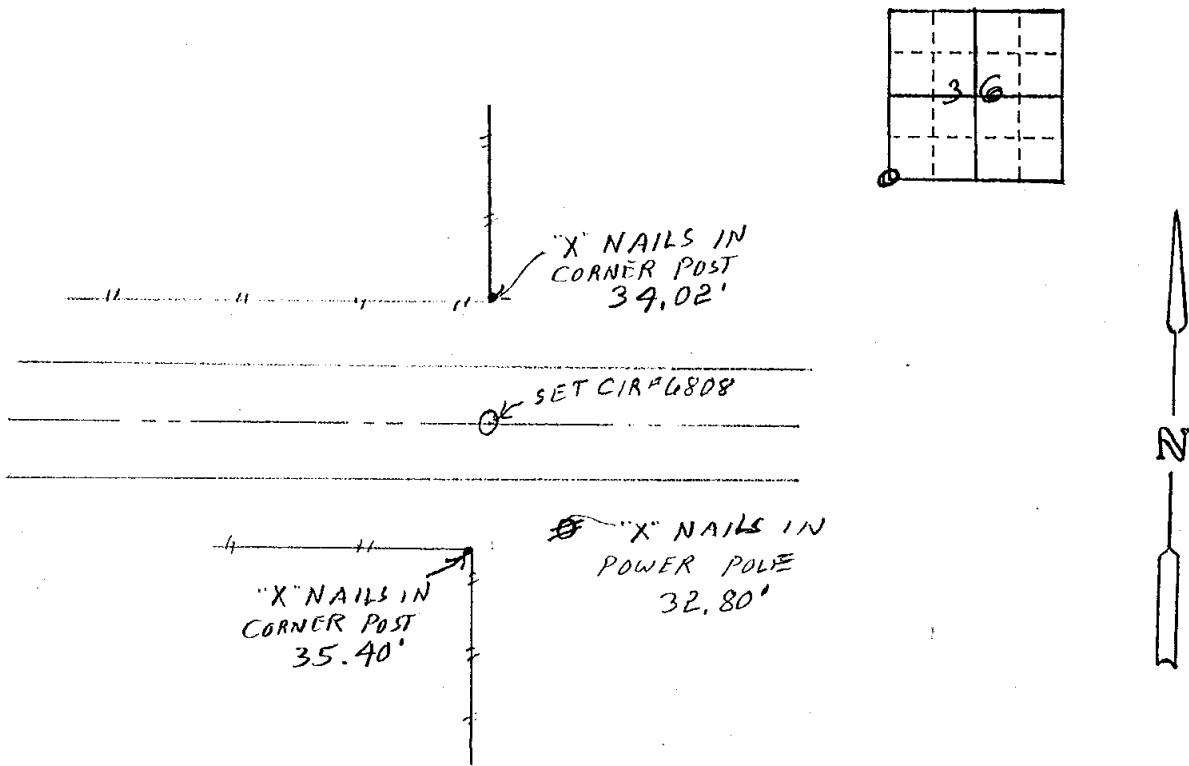
Land Survey Monuments situated in Section 36 OF 36 Township 75 N., Range 26 W., of the Fifth Principal Meridian, MADISON County, Iowa.  
Previously recorded in \_\_\_\_\_ in County Recorder's Office.  
(book, page, document number, etc.)

(Show reason for preparing this certificate, the evidence and detailed procedures used in establishing the the corner positions and monumentation found or placed.)

Monument Description and Remarks: S.W. COR - Set Yellow C.I.R. #6808 3" deep  
at centerline existing County road in line with property line  
fences to the North and South. NO record of stone being set  
at this corner.

PLAN - VIEW

(Show a minimum of three reference ties to durable physical objects, relevant monuments and physical conditions that will enable recovery of the corner.)



I hereby certify that this land surveying document was prepared and the related survey work was performed by me or under my direct personal supervision and that I am a duly licensed Land Surveyor under the laws of the State of Iowa.

J.M. Hochstetler  
J.M. HOCHSTETLER

License number 6808 Date 7/3/2010

My license renewal date is December 31, 2001

Pages or sheets covered by this seal: 1

List Corners to be Indexed

| Corners | Section | Twp | Range |
|---------|---------|-----|-------|
| SW      | 36      | 75N | 26W   |