



005023

FILED NO. \_\_\_\_\_

BOOK 2 PAGE 163

2000 JUL 10 PM 2:28

5<sup>00</sup>  
RECORDED  
1<sup>00</sup>

COMPUTER   
RECORDED   
COMPARED \_\_\_\_\_

MICHELLE UTSLER  
RECORDER  
MADISON COUNTY, IOWA

VANCE & HOCHSTETLER, P.C., CONSULTING ENGINEERS, WINTERSSET, IOWA (515) 462-9995  
CHARLES T. VANCE, 110 West Green St., Winterset, Iowa, 50273  
JAMES M HOCHSTETLER, 110 West Green St., Winterset, Iowa 50273

### UNITED STATES PUBLIC LAND SURVEY CORNER CERTIFICATE

Land Survey Monuments situated in Section 33 OF 33, Township 77 North, Range 29 West, of the Fifth Principal Meridian, MADISON County, Iowa.  
Previously recorded in \_\_\_\_\_ in County Recorder's Office.  
(book, page, document number, etc.)

(Show reason for preparing this certificate, the evidence and detailed procedures used in establishing the the corner positions and monumentation found or placed.)

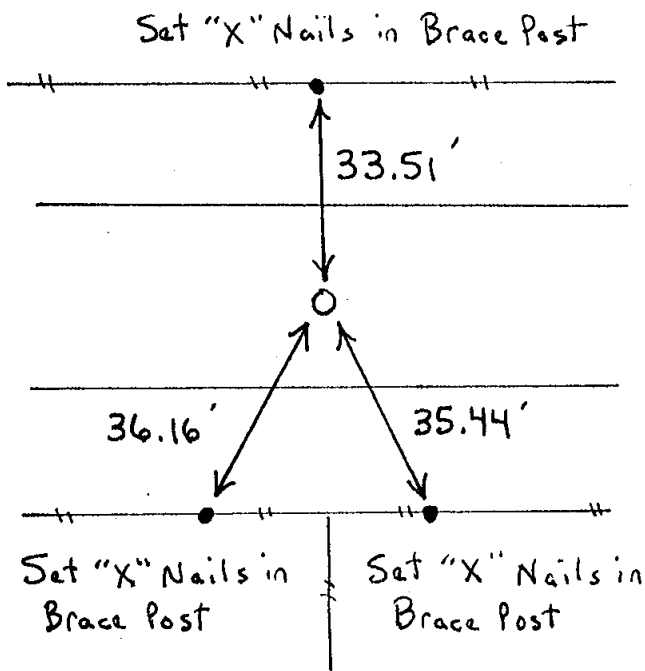
Monument Description and Remarks:

S. 1/4 cor. - Set Capped Iron Rod (C.I.R.) #6808 (1/2" rebar, 3" deep)  
at road R.O.W. split in line with property line fence to South.  
SW cor. - Fd. Round headed bolt approximately 2' deep at center  
of intersection.

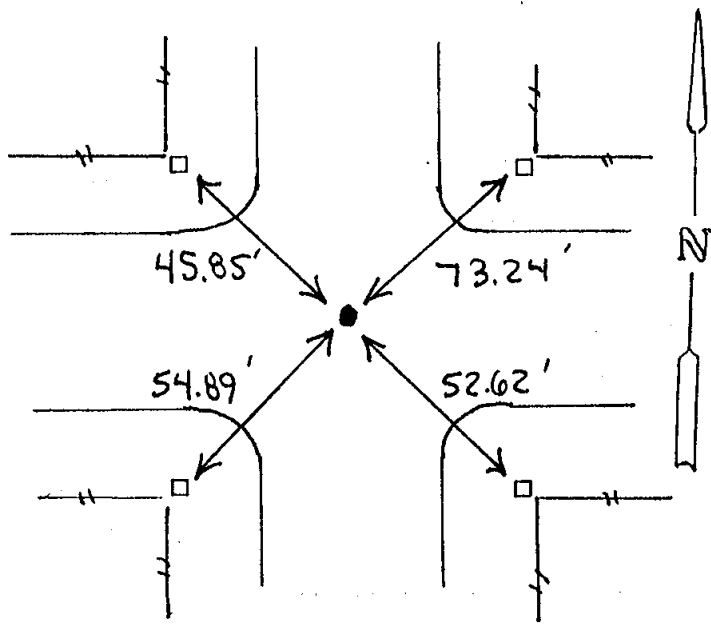
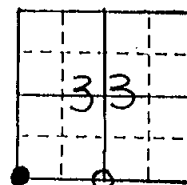
### PLAN - VIEW

(Show a minimum of three reference ties to durable physical objects, relevant monuments and physical conditions that will enable recovery of the corner.)

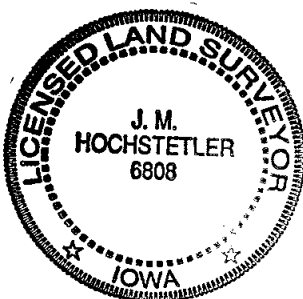
SOUTH 1/4 COR.  
SEC. 33-77-29  
Set C.I.R. #6808



SW CORNER  
SEC. 33-77-29  
Fd. Round headed Bolt



NOTE: All ties are to "X"s cut in found grader blades.



I hereby certify that this land surveying document was prepared and the related survey work was performed by me or under my direct personal supervision and that I am a duly licensed Land Surveyor under the laws of the State of Iowa.

*J.M. Hochstetler*  
J.M. HOCHSTETLER

License number 6808 Date 7/30/2000

My license renewal date is December 31, 2001

Pages or sheets covered by this seal: 1

### List Corners to be Indexed

Corners	Section	Twp	Range
S. 1/4 cor.	33	77 N	29 W
SW cor.	33	77 N	29 W