

FILED NO. 005603
BOOK 2 PAGE 171
2000 AUG 18 AM 10:57

REC'D 5⁰⁰
AUG 18
FILED 1⁰⁰

COMPUTER
RECORDED
COMPARED

HICKI UTSLER
RECORDER
MADISON COUNTY, IOWA

VANCE & HOCHSTETLER, P.C., CONSULTING ENGINEERS, WINTERSSET, IOWA (515) 462-3995
CHARLES T. VANCE, 110 West Green St., Winterset, Iowa, 50273
JAMES M HOCHSTETLER, 110 West Green St., Winterset, Iowa 50273

UNITED STATES PUBLIC LAND SURVEY CORNER CERTIFICATE

OF
Land Survey Monuments situated in Section 15, Township 76 N, Range 27 W, of the Fifth Principal Meridian, MADISON County, Iowa.
Previously recorded in _____ in County Recorder's Office.
(book, page, document number, etc.)

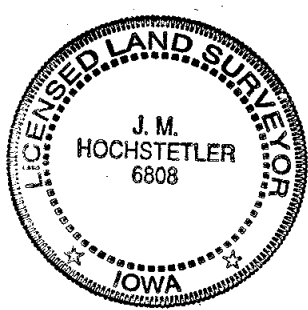
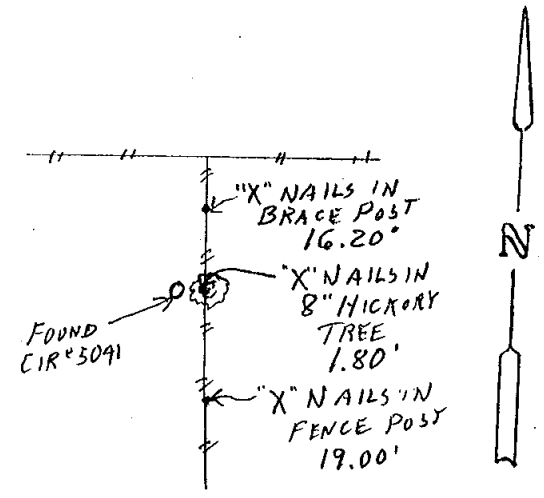
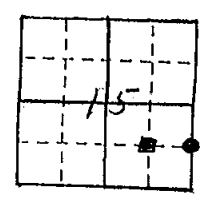
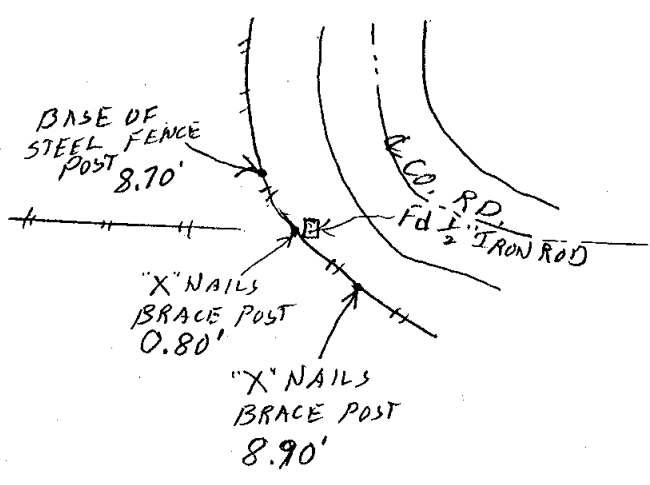
(Show reason for preparing this certificate, the evidence and detailed procedures used in establishing the the corner positions and monumentation found or placed.)

Monument Description and Remarks: NW COR SE $\frac{1}{4}$ SE $\frac{1}{4}$ SEC. 15-76-27 - Found $\frac{1}{2}$ " Iron Rod set by F.V. Clark of Co. Engr. Office by found stone in 1954.
NE Cor SE $\frac{1}{4}$ SE $\frac{1}{4}$ Sec. 15-76-27 - Found CIR #3091 set in 1988 for a survey - Based on old fences and road dedication information.

PLAN - VIEW

(Show a minimum of three reference ties to durable physical objects, relevant monuments and physical conditions that will enable recovery of the corner.)

NW COR
SE $\frac{1}{4}$ SE $\frac{1}{4}$



I hereby certify that this land surveying document was prepared and the related survey work was performed by me or under my direct personal supervision and that I am a duly licensed Land Surveyor under the laws of the State of Iowa.
J.M. Hochstetler
J.M. HOCHSTETLER
License number 6808 Date 8/15/2000
My license renewal date is December 31, 2001
Pages or sheets covered by this seal: 1

List Corners to be Indexed

Corners	Section	Twp	Range
NW COR SE $\frac{1}{4}$ SE $\frac{1}{4}$	15	76N	27W
NE COR SE $\frac{1}{4}$ SE $\frac{1}{4}$	15	76N	27W