

UNITED STATES PUBLIC LAND SURVEY CORNER CERTIFICATE

OF

Land Survey Monuments situated in Section 21, Township 76N, Range 27W, of the Fifth Principal Meridian, MADISON County, Iowa. Previously recorded in _____ in County Recorder's Office.

(book, page, document number, etc.)

(Show reason for preparing this certificate, the evidence and detailed procedures used in establishing the corner positions and monumentation found or placed.)

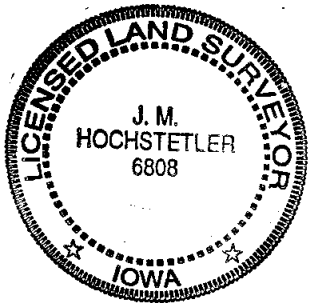
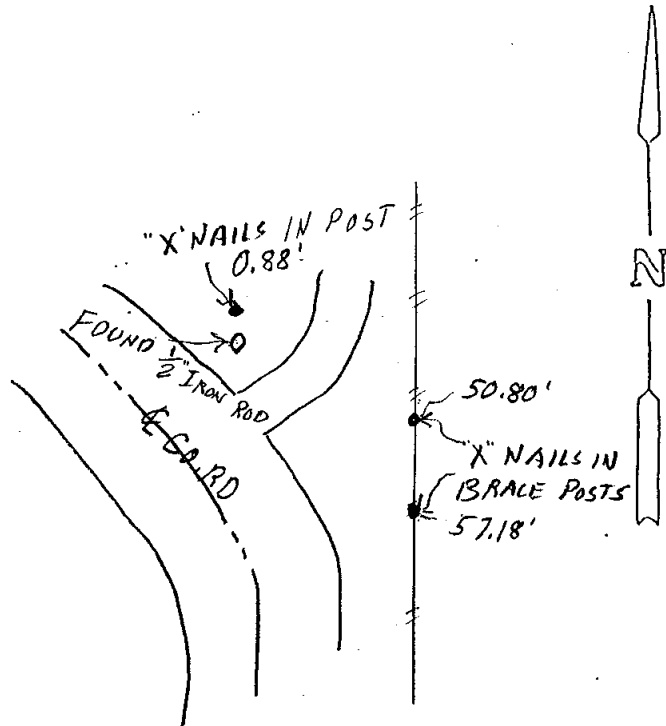
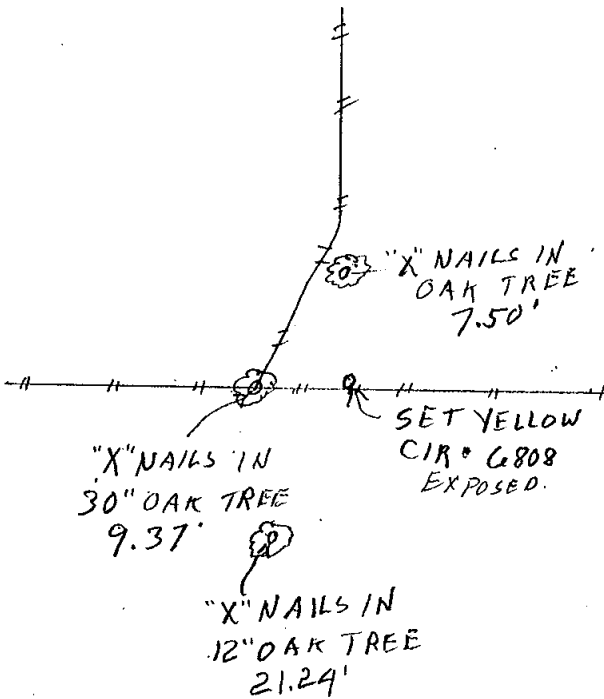
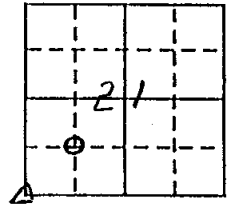
Monument Description and Remarks: SE COR NW 1/4 SW 1/4 - SET CIR# 6808 based on projections of old property line fences from the North and West. No record of anything ever being set at this point.
SW Cor. - Found 1/2" Iron Rod by locating property pins on previous surveys in the area. Corner was certified on 9/6/95 as CIR# 6808 but the ties were all gone and the cap had been destroyed by dozer work in the area.

PLAN - VIEW

(Show a minimum of three reference ties to durable physical objects, relevant monuments and physical conditions that will enable recovery of the corner.)

SE COR
NW 1/4 SW 1/4
SEC. 21-76-27

SW COR



I hereby certify that this land surveying document was prepared and the related survey work was performed by me or under my direct personal supervision and that I am a duly licensed Land Surveyor under the laws of the State of Iowa.

J. M. Hochstetler
J. M. HOCHSTETLER

License number 6808 Date 5/26/2000
My license renewal date is December 31, 2001
Pages or sheets covered by this seal: 1

Corners	Section	Twp	Range
SE COR NW 1/4 SW 1/4	21	76N	27W
SW COR	21	76N	27W

REC'D 5.00
AUD'S
F.M.F. \$ 1.00

FILED NO. 004487
BOOK 2 PAGE 157

2000 MAY 31 PM 1:26

COMPUTER
RECORDED
COMPARED

MICHELLE UTSLER
RECORDER
MADISON COUNTY, IOWA