

FILED NO. **004398**

BOOK 2 PAGE 156

2000 MAY 24 AM 11:29

MICHELLE UTSLER
RECORDER
MADISON COUNTY, IOWA

REC'D 5⁰⁰
AUG 8
FILED 10⁰⁰

COMPUTER
RECORDED
COMPARED _____

Prepared By: J. Brian Morrissey, Morrissey Surveying, 1405 Hwy G28 Otley, Iowa 50214-8518, 515-627-5554

UNITED STATES PUBLIC LAND SURVEY CORNER CERTIFICATE OF

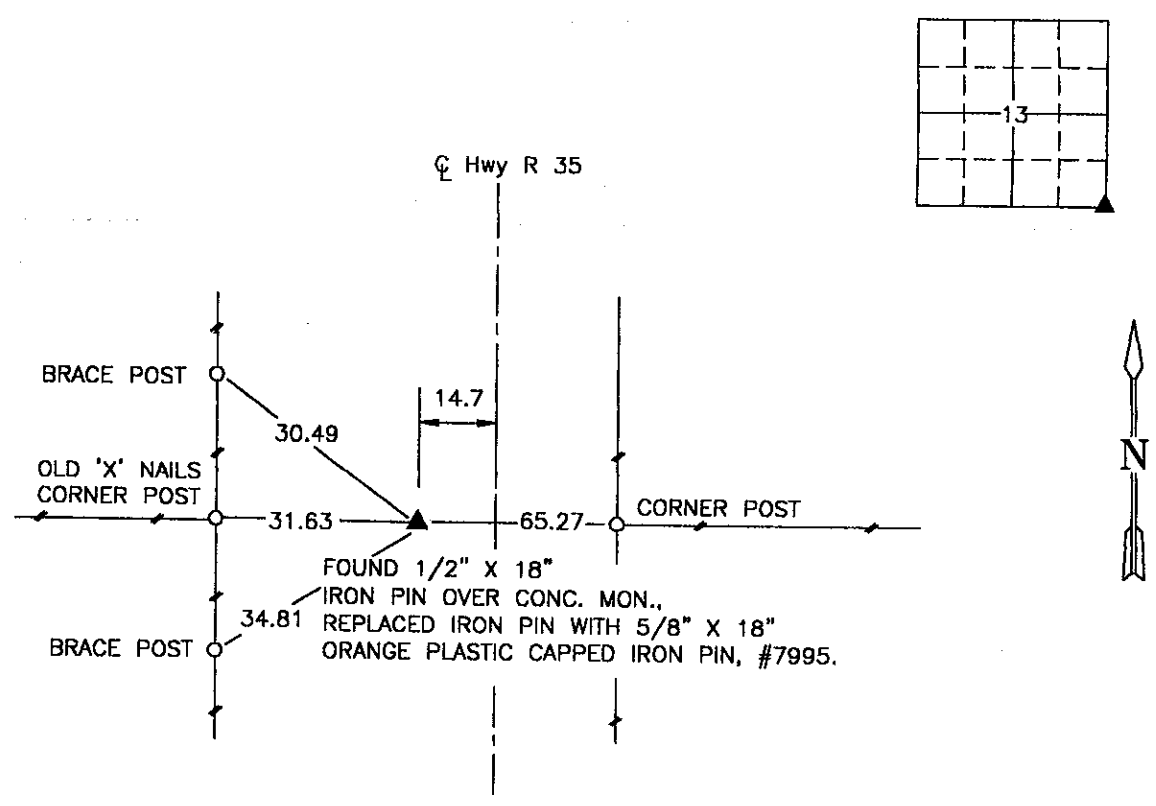
Land Survey Monuments situated in Section 13, Township 76 N, Range 26 W, of the Fifth Principal Meridian, Madison County, Iowa.
Previously recorded in N.A. in County Recorders Office.
(book, page, document number, etc.)

(Show reason for preparing this certificate, the evidence and detailed procedures used in establishing the corner positions and monumentation found or placed.)

Monument Description and Remarks: Found bent 1/2" x 18" iron pin, probed and hit conc. mon. as per 1966 County Engineer's ties roughly 3' below pin. Accepted position. Set 5/8" x 18" orange plastic capped iron pin #7995 in place of bent iron pin.

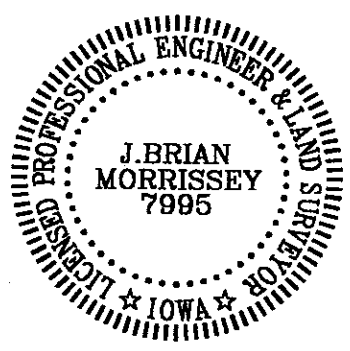
PLAN VIEW

(Show a minimum of three reference ties to durable physical objects, relevant monuments and physical conditions that will enable recovery of the corner.)



SE CORNER, SEC. 13

NOTE: ALL TIES TO "X" NAILS UNLESS NOTED.



I hereby certify that the survey work was completed and this certificate was prepared by me or under my direct personal supervision and that I am a duly Licensed Land Surveyor under the laws of the State of Iowa.

Signature: J. Brian Morrissey Date: 5/23/00
J. Brian Morrissey

License number 7995.
My license renewal date is December 31, 2001.