

2000 JUN 15 PM 3:26

COMPUTER   
RECORDED   
COMPARED

REC'D 500  
ADD'S  
PLMP'S 100

HELLE UTSLER  
RECORDER  
MADISON COUNTY, IOWA

2000-103S

VANCE & HOCHSTETLER, P.C., CONSULTING ENGINEERS, WINTERSET, IOWA (515) 462-3995  
CHARLES T. VANCE, 110 West Green St., Winterset, Iowa, 50273  
JAMES M HOCHSTETLER, 110 West Green St., Winterset, Iowa 50273

UNITED STATES PUBLIC LAND SURVEY CORNER CERTIFICATE

OF  
Land Survey Monuments situated in Section 4, Township 74 N, Range  
29 W, of the Fifth Principal Meridian, MADISON County, Iowa.  
Previously recorded in \_\_\_\_\_ in County Recorder's Office.  
(book, page, document number, etc.)

(Show reason for preparing this certificate, the evidence and detailed procedures used in establishing the the corner positions and monumentation found or placed.)

Monument Description and Remarks: S.E. COR - Found PK Nail in Asphalt Road  
set by County Engineer Survey Crew.

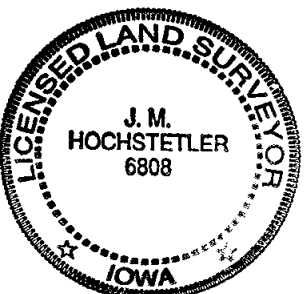
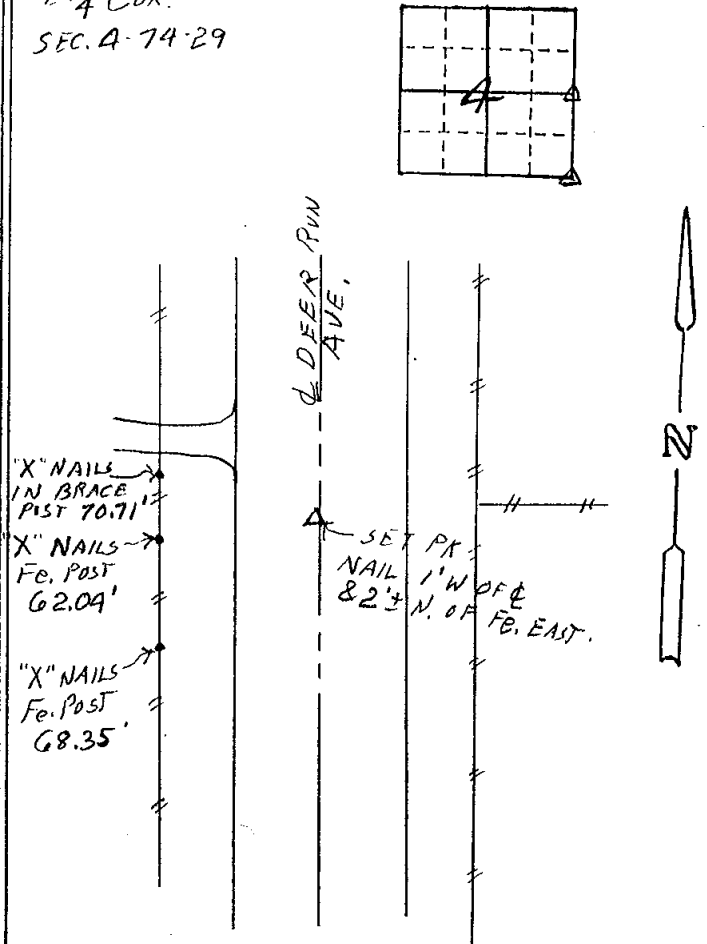
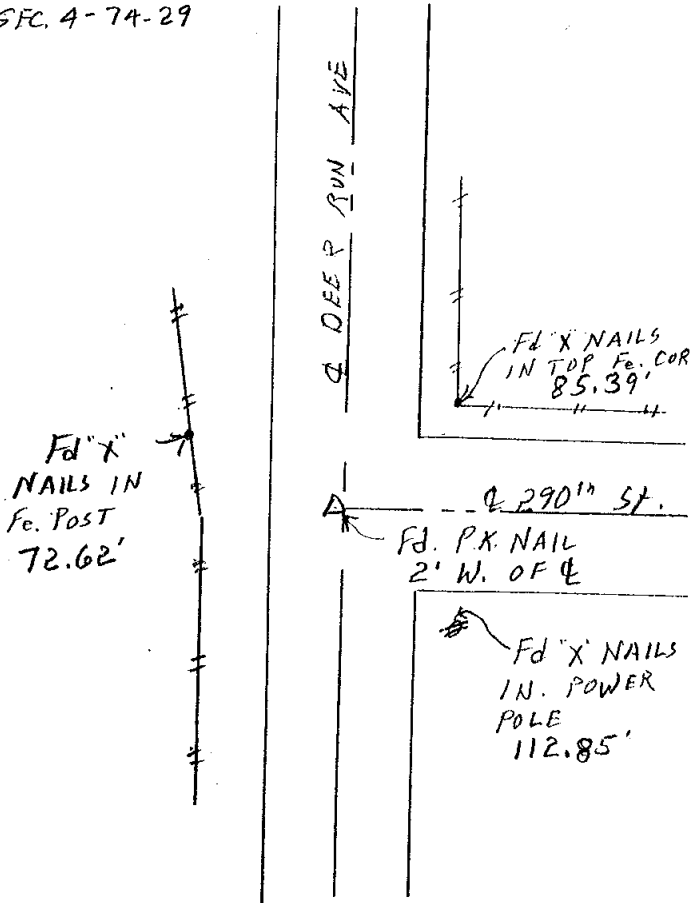
E<sup>1</sup>/<sub>4</sub> Cor. - Set P.K. Nail based on County Road Easement descriptions,  
old fence to East and County Road centerline description.

PLAN - VIEW

(Show a minimum of three reference ties to durable physical objects, relevant monuments and physical conditions that will enable recovery of the corner.)

SE COR.  
SEC. A-74-29

E<sup>1</sup>/<sub>4</sub> COR.  
SEC. A-74-29



I hereby certify that this land surveying document was prepared and the related survey work was performed by me or under my direct personal supervision and that I am a duly licensed Land Surveyor under the laws of the State of Iowa.

J. M. Hochstetler  
J. M. HOCHSTETLER

License number 6808 Date 6/13/2000

My license renewal date is December 31, 2001

Pages or sheets covered by this seal: 1

List Corners to be Indexed

Corners	Section	Twp	Range
SE COR	4	74N	29W
E <sup>1</sup> / <sub>4</sub> COR	4	74N	29W