

LISA SMITH, COUNTY RECORDER
MADISON IOWA

PREPARED BY: BRUCE LOGEMANN L.S., BARTLETT & WEST, 6919 VISTA DR., WEST DES MOINES, IOWA 50266, 515-440-2856

UNITED STATES PUBLIC LAND SURVEY CORNER CERTIFICATE

OF

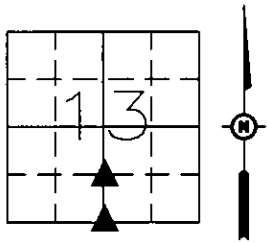
Land Survey Monuments situated in Section 13, Township 77, Range 26, West of the Fifth Principal Meridian,
MADISON County, Iowa. Not Previously recorded in MADISON COUNTY in County Recorder
(book, page, document number, etc.)

(Show reason for preparing this certificate, the evidence and detailed procedures used in establishing the corner and monumentation found or placed)

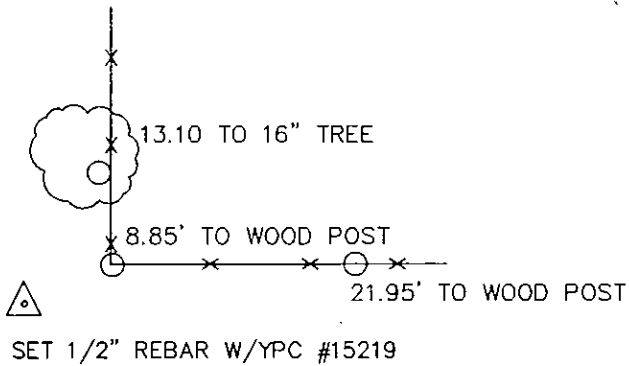
Monument Description and Remarks: S 1/4 COR. SECTION 13-77-26 SET 1/2" REBAR W/YPC #15219
SET COR. IN LINE W/ N 1/4 COR. AND CENTER COR. AND IN LINE W/ THE SE COR. AND THE SW COR. SE. 1/4
SE FR. 1/4 ALL IN SECTION 13-77-26
SW. COR. NW. 1/4 SE FR. 1/4 SECTION 13-77-26 SET 1/2" REBAR W/YPC #15219 AT MIDPOINT

PLAN VIEW

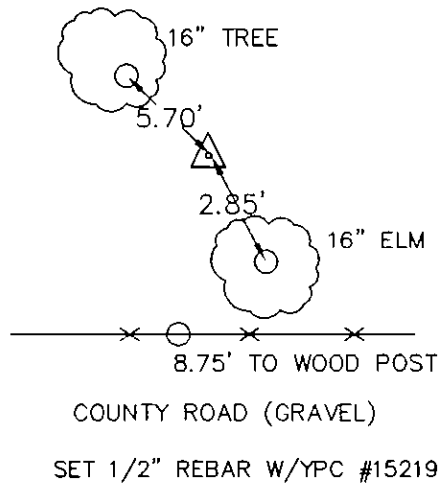
(Show a minimum of three reference ties to durable physical objects, relevant monuments and physical condition that positions will enable recovery of the corner.)



NOTE: ALL DISTANCES TO SPIKE (SLOPE DISTANCE)
SW CORNER NW 1/4 SE FR 1/4 SECTION 13-77-26

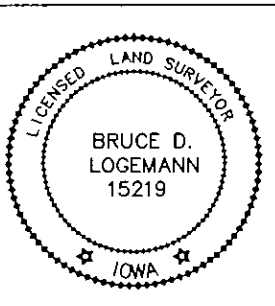


S1/4 CORNER SECTION 13-77-26



List Corners to be Indexed

Corner	Section	Twp	Range
S 1/4	13	77	26
N 1/4	24	77	26
SW COR. NW 1/4. SE FR 1/4			
	13	77	26
NW COR. SW 1/4. SE FR 1/4			
	13	77	26



I hereby certify that the survey work completed and this certificate was prepared by me or under my direct supervision and that I am a duly licenced land surveyor under the laws of the state of Iowa.

SIGNATURE: B. Logemann DATE: 10/2/08
BRUCE D. LOGEMANN LS#15219

MY LICENSE RENEWAL DATE IS DECEMBER 31, 2009

PAGES OR SHEETS COVERED BY THIS SEAL: 1