

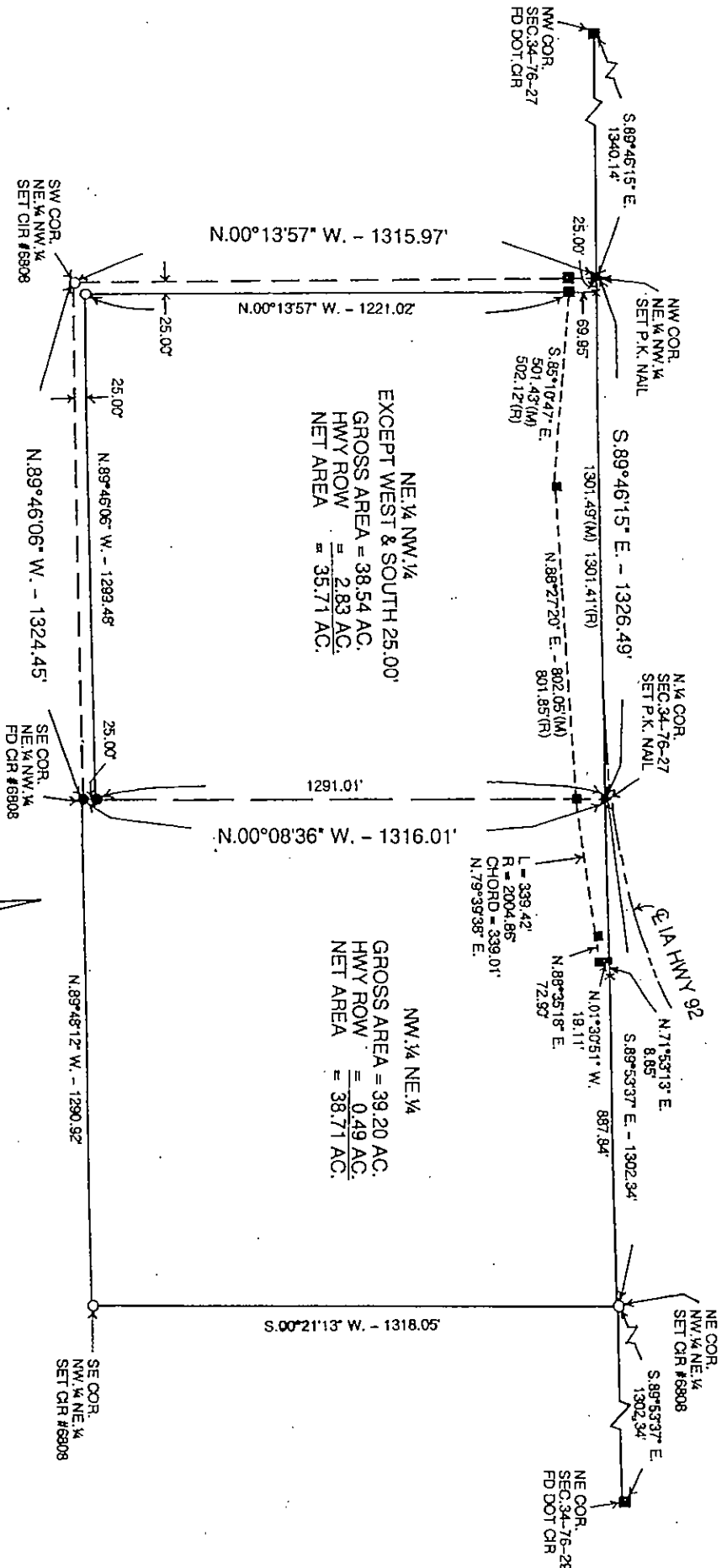
INDEX
ANNO
SCAN
CHECK

LISA SMITH, COUNTY RECORDER
MADISON IOWA

VANCE & HOCHSTETLER, P.C. • CONSULTING ENGINEERS • WINTERSSET, IOWA • 50273

CHARLES T. VANCE, P.E. & L.S. • JAMES M. HOCHSTETLER, L.S. • (515) 462-3995 • FAX: (515) 462-9845

PROPERTY LINE RETRAACEMENT SURVEY FOR SOUTH CENTRAL IOWA
LANDFILL OF PROPERTY OWNED BY BISHOP FARMS IN THE NORTHEAST
QUARTER OF THE NORTHWEST QUARTER AND THE NORTHWEST QUARTER
OF THE NORTHEAST QUARTER ALL IN SECTION 34, TOWNSHIP 76 NORTH,
RANGE 27 WEST OF THE 5TH P.M., MADISON COUNTY, IOWA.

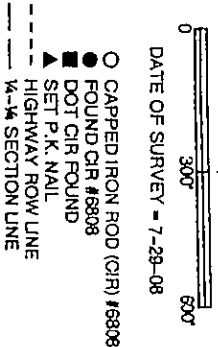


NE 1/4 NW 1/4
EXCEPT WEST & SOUTH 25.00'
GROSS AREA = 38.54 AC.
HWY ROW = 2.83 AC.
NET AREA = 35.71 AC.

NW 1/4 NE 1/4
GROSS AREA = 39.20 AC.
HWY ROW = 0.49 AC.
NET AREA = 38.71 AC.

LEGAL DESCRIPTION: (Book 123, Page 113)

The NE 1/4 of the NW 1/4, except a strip 25 feet wide off the W. and S. sides thereof, heretofore conveyed for a highway, and the NW 1/4 of the NE 1/4 of Section 34, Township 76 North, Range 27 West of the 5th P.M., Madison County, Iowa subject to any public rights on the N. side of said real estate.



- CAPPED IRON ROD (CIR) #6808
- FOUND CIR #6808
- ▲ DOT CIR FOUND
- ▲ SET P.K. NAIL
- 1/4-1/4 SECTION LINE
- HIGHWAY ROW LINE

LICENSED LAND SURVEYOR
J. M. HOCHSTETLER
#6808
IOWA

I hereby certify that this land surveying document was prepared and the related survey work was performed by me or under my direct personal supervision and that I am a duly licensed Land Surveyor under the laws of the State of Iowa.

J. M. HOCHSTETLER
Date 10/3/08

My license renewal date is December 31, 2011

Pages or sheets covered by this seal: 1

08-986