

INDX ✓
ANNO
SCAN
CHEK

LISA SMITH, COUNTY RECORDER
MADISON IOWA

08-115s

VANCE & HOCHSTETLER, P.C., CONSULTING ENGINEERS, WINTERSSET, IOWA (515) 462-3995
CHARLES T. VANCE, 110 West Green St., Winterset, Iowa, 50273
JAMES M HOCHSTETLER, 110 West Green St., Winterset, Iowa 50273

UNITED STATES PUBLIC LAND SURVEY CORNER CERTIFICATE

Land Survey Monuments situated in Section 26 OF 26, Township 76 NORTH, Range 27 WEST, of the Fifth Principal Meridian, MADISON County, Iowa.
Previously recorded in _____ in County Recorder's Office.
(book, page, document number, etc.)

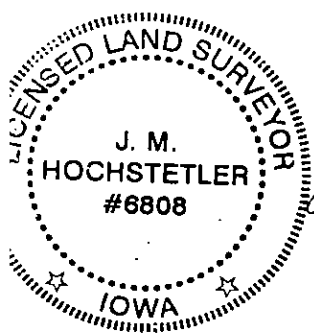
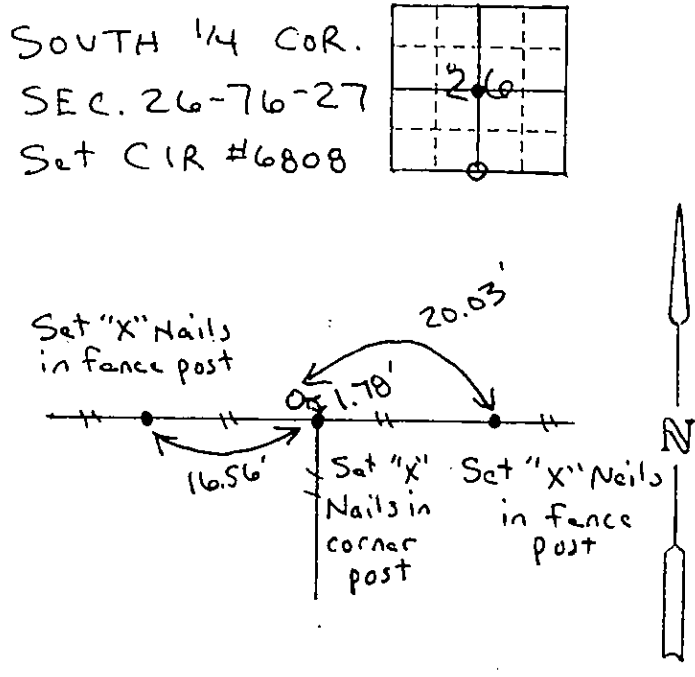
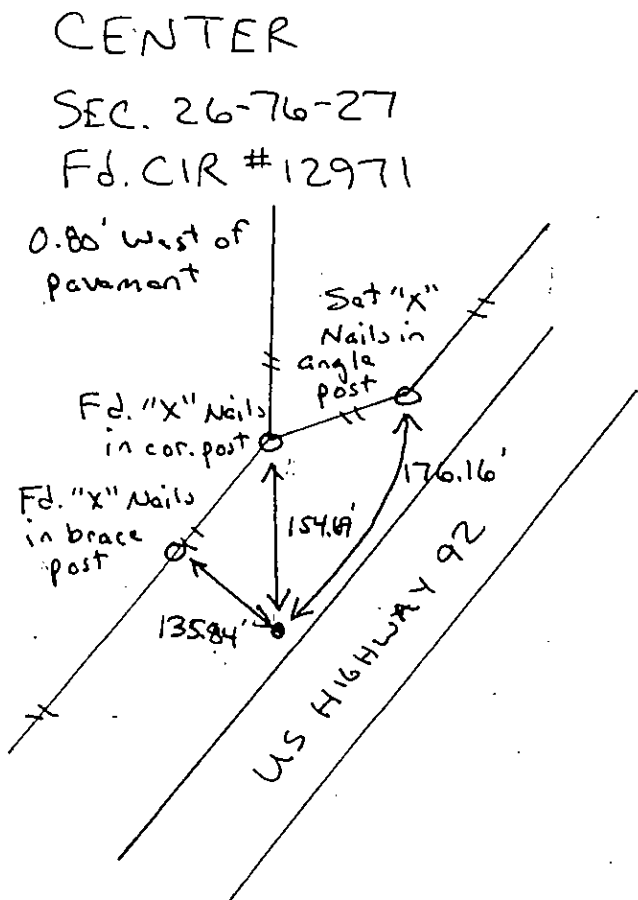
(Show reason for preparing this certificate, the evidence and detailed procedures used in establishing the the corner positions and monumentation found or placed.)

Monument Description and Remarks:

Center - Fd. Capped Iron Rod #12971 (exposed) along US Highway 92.
0.80' W. of pavement
South 1/4 cor. - Set Capped Iron Rod #6808 at existing 3-way fence
corner on line from Center through two DOT right-of-way
CIRs.

PLAN - VIEW

(Show a minimum of three reference ties to durable physical objects, relevant monuments and physical conditions that will enable recovery of the corner.)



I hereby certify that this land surveying document was prepared and the related survey work was performed by me or under my direct personal supervision and that I am a duly licensed Land Surveyor under the laws of the State of Iowa.

J.M. Hochstetler
 J.M. HOCHSTETLER
 License number 6808 Date 9/5/08
 My license renewal date is December 31, 2009
 Pages or sheets covered by this seal: 1

List Corners to be Indexed

Corners	Section	Twp	Range
Center	26	76N	27W
S. 1/4 cor.	26	76N	27W