

INDEX ✓
ANNO
SCAN
CHEK

LISA SMITH, COUNTY RECORDER
MADISON IOWA

VANCE & HOCHSTETLER, P.C., CONSULTING ENGINEERS, WINTERSSET, IOWA (515) 462-3995
CHARLES T. VANCE, 110 West Green St., Winterset, Iowa, 50273
JAMES M HOCHSTETLER, 110 West Green St., Winterset, Iowa 50273

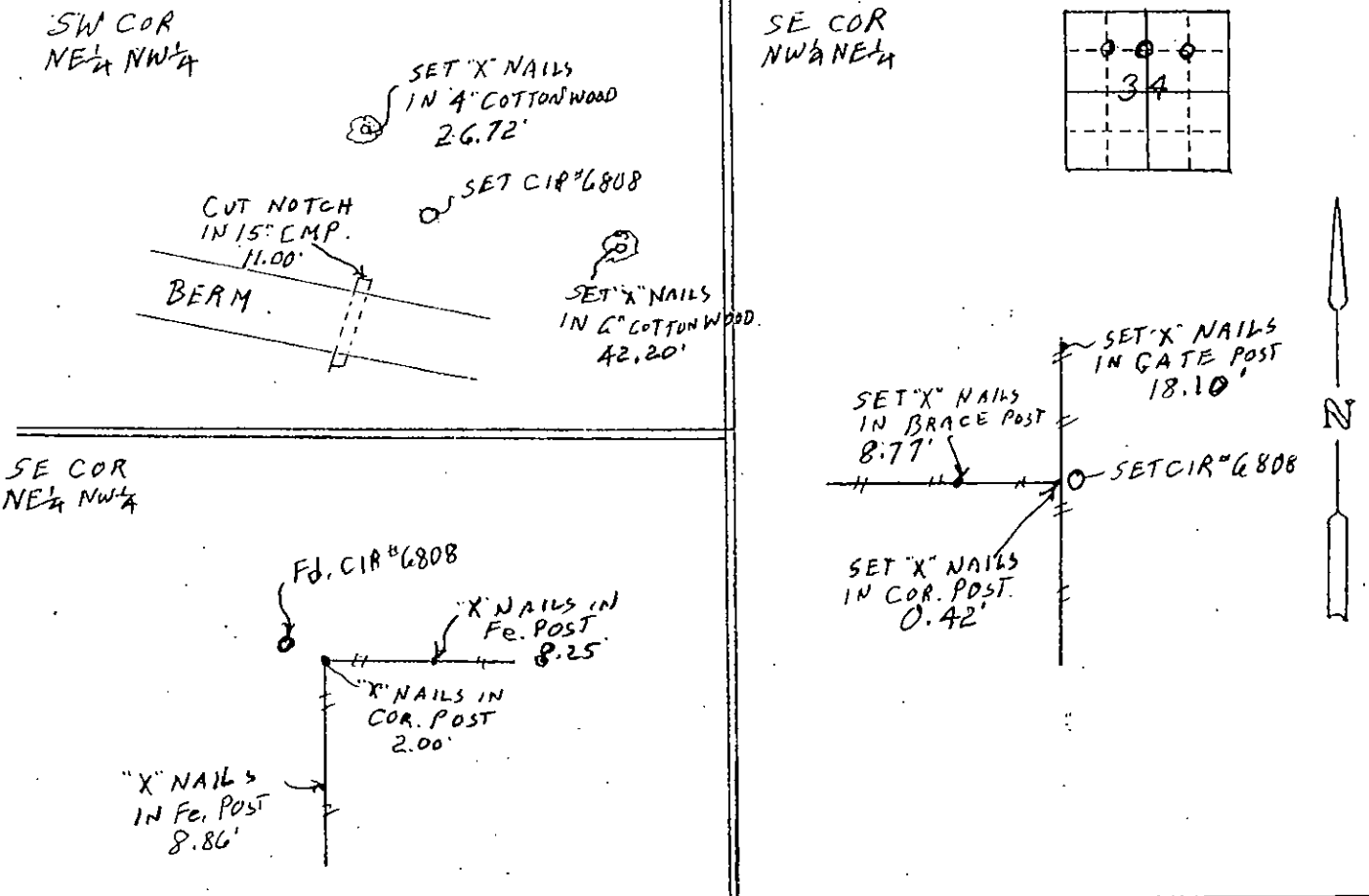
UNITED STATES PUBLIC LAND SURVEY CORNER CERTIFICATE

Land Survey Monuments situated in Section 34 OF 34, Township 76N, Range 27W of the Fifth Principal Meridian, MADISON County, Iowa.
Previously recorded in SW COR NE 1/4 NW 1/4 in Book 1 PAGE 374 in County Recorder's Office.
(book, page, document number, etc.)

(Show reason for preparing this certificate, the evidence and detailed procedures used in establishing the the corner positions and monumentation found or placed.)

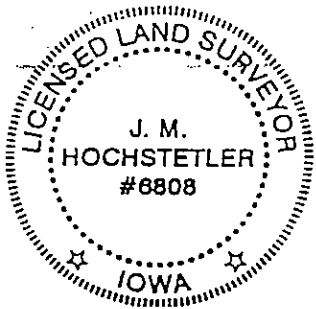
Monument Description and Remarks: SW COR NE 1/4 NW 1/4 - Set yellow CIR #6808 to replace a corner set by Morrissey which had been destroyed. We used his ties and dimensions shown on a plat of Parcel C.
SE COR NE 1/4 NW 1/4 - Found yellow CIR #6808 set for a survey in 1985. Morrissey certified this corner but called it the SE Cor. NW 1/4 NE 1/4 in Book 1 Page 372.
SE COR NW 1/4 NE 1/4 - Set yellow CIR #6808 at property line fence North, South and West. Certificate in Book 1 Page 372 is wrong.
PLAN - VIEW

(Show a minimum of three reference ties to durable physical objects, relevant monuments and physical conditions that will enable recovery of the corner.)



List Corners to be Indexed

Corners	Section	Twp	Range
SW COR NE 1/4 NW 1/4	34	76N	27W
SE COR NE 1/4 NW 1/4	34	76N	27W
SE COR NW 1/4 NE 1/4	34	76N	27W



I hereby certify that this land surveying document was prepared and the related survey work was performed by me or under my direct personal supervision and that I am a duly licensed Land Surveyor under the laws of the State of Iowa.

J.M. Hochstetler
J.M. HOCHSTETLER
License number 6808 Date 7/29/08
My license renewal date is December 31, 2009
Pages or sheets covered by this seal: 1