

LISA SMITH, COUNTY RECORDER
MADISON IOWA

Daniels Land Surveying, 22598 18th Avenue, New Virginia, IA 50210, 641-449-3259

UNITED STATES PUBLIC LAND CORNER CERTIFICATE OF

Land Survey Monuments situated in Section 33, Township 74 N, Range 26 W, of the
5th P.M., Madison County, Iowa. Previously recorded in n.a.
in County Recorders Office. (book, page, document number, etc.)

(Show reason for preparing this certificate, the evidence and detailed procedures used in
establishing the corner positions and monumentation found or placed.)

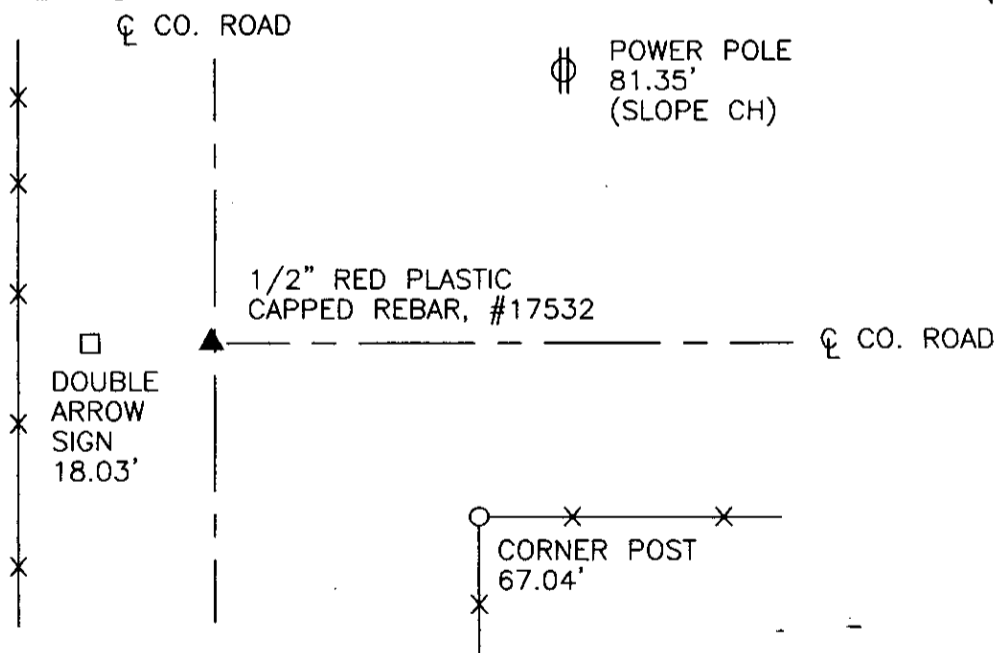
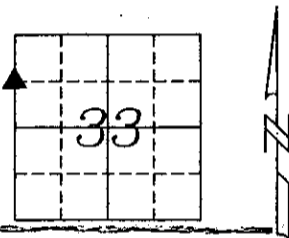
Monument Description and Remarks:

Searched for steel bar indicated on County Engineer records but was unable to
locate and single tie was gone. Set 1/2" x 24" red plastic capped rebar, #17532 at
intersection of County roads as both are on respective section lines.

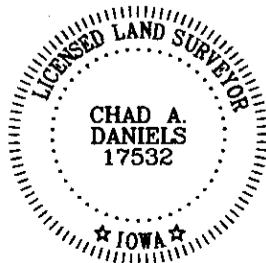
PLAN VIEW

(Show a minimum of three reference ties to durable physical objects, relevant monuments
and physical conditions that will enable recovery of the corner.)

ALL TIES TO 30d SPIKES UNLESS NOTED



SW COR., NW 1/4, NW 1/4, SEC. 33



I hereby certify that this land surveying document was prepared and the
related survey work was performed by me or under my direct personal
supervision and that I am a duly licensed Land Surveyor under the laws
of the State of Iowa.

Signature: Chad A. Daniels Date: 4/30/2008
Chad A. Daniels

License number 17532
My license renewal date is December 31, 2008