

LISA SMITH, COUNTY RECORDER  
MADISON IOWA

HACKETT SURVEYING, Prepared By: Michael James Hackett, 712 North 9th. Ave., Winterset, Ia. 50273, Tel. (515) 462-1106

# UNITED STATES PUBLIC LAND SURVEY CORNER CERTIFICATE OF

Land Survey Monuments situated in Section 18, Township 75 N, Range 27 W, of the Fifth Principal Meridian, Madison County, Iowa.  
Previously recorded in Book 1, Page 639 in County Recorder's Office.  
(book, page, document number, etc.)

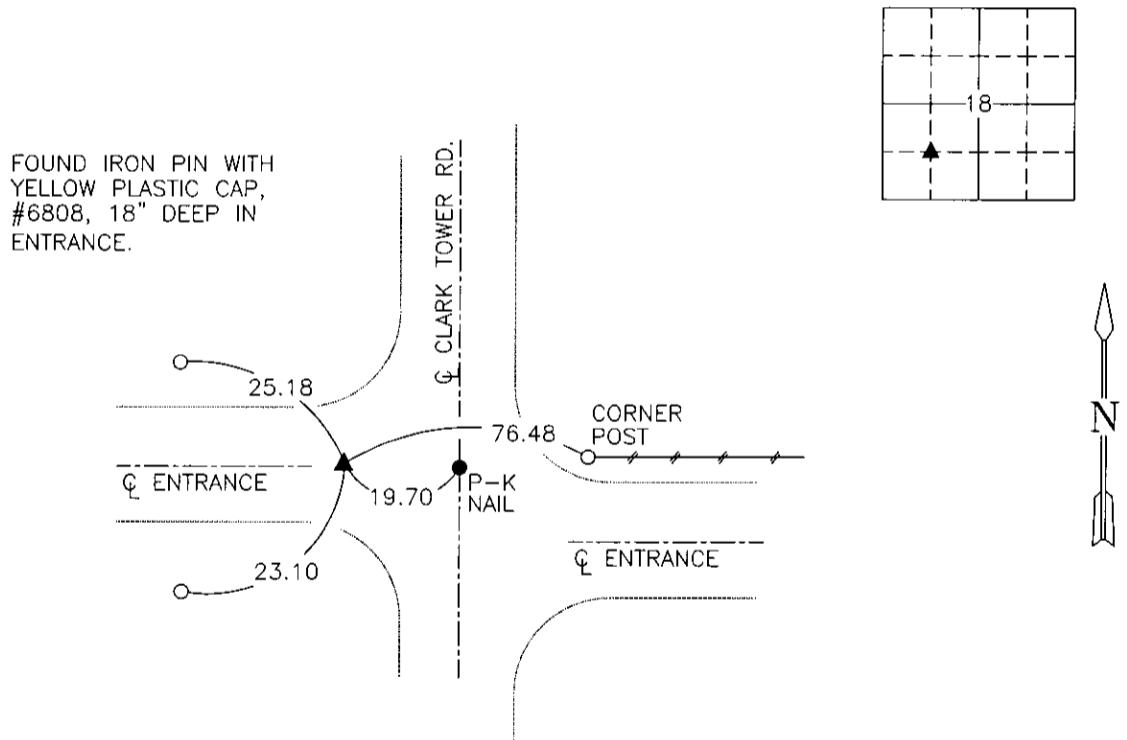
(Show reason for preparing this certificate, the evidence and detailed procedures used in establishing the corner positions and monumentation found or placed.)

Monument Description and Remarks: Found iron pin with yellow plastic cap, #6808, 18" deep in entrance.  
Traversed the section to confirm location of corner. Accepted position. The reason for preparing this certificate  
is that the previous ties have changed.

northeast corner of the Southeast Quarter of the Northwest Quarter to the calculated point of the southwest corner

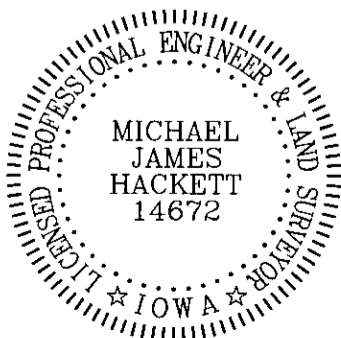
## PLAN VIEW

(Show a minimum of three reference ties to durable physical objects, relevant monuments and physical conditions that will enable recovery of the corner.)



SW. COR., NE. 1/4, SW. 1/4, SEC. 18

NOTE: ALL TIES TO "X" NAILS UNLESS NOTED



I hereby certify that this land surveying document was prepared and the related survey work was performed by me or under my direct personal supervision and that I am a duly Licensed Land Surveyor under the laws of the State of Iowa.

Signed [Signature] Date 3-28-2008  
Michael James Hackett

Iowa license number 14672.  
My license renewal date is 12/31/2008.  
Pages covered by this seal: 1.