

INDX ✓  
ANNO  
SCAN  
CHEK

LISA SMITH, COUNTY RECORDER  
MADISON IOWA

RETURN TO M.J.R. MAPPING, INC., 30236 K. AVE., ADEL, IA 50003

SLATS-00

# UNITED STATES PUBLIC LAND SURVEY CORNER CERTIFICATE OF

Land Survey Monuments situated in Section 3 Township 77 North Range 29 West of the Fifth Principal Meridian, Madison County, Iowa.

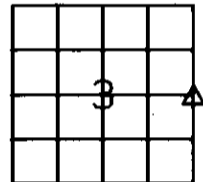
Previously recorded in \_\_\_\_\_ in County Recorder's Office.  
(book, page, document number, ect.)

(Show reason for preparing this certificate, the evidence and detailed procedures used in establishing the corner positions and found or placed.)

Monument Description and Remarks: \_\_\_\_\_  
Monuments were found and verified with existing survey recorded  
Bk 2 Pg 54 Madison County Recorder.

## PLAN - VIEW

(Show a minimum of three reference ties to durable physical objects, relevant monuments and physical conditions that will enable recovery of the corner)



E 1/4 CORNER  
SEC. 3-77-29

E. 1/4 Cor.  
Sec. 3-77-29  
Fnd Lead Plug  
3' No. of 6

71.10'  
Center of Tel.  
Junction Box

79.15'  
x nails  
power pole

HWY G-14

105th Street

45.90'  
Steel address  
post 1410

I hereby certify that this land surveying document was prepared and the related survey work was performed by me or under my direct personal supervision and that I am a duly licensed Land Surveyor under the laws of the State of Iowa.

Signed James V. Rash Date 3-7-08

James V. Rash, L.S.  
Iowa license No. 5899  
My license renewal date is December 31, 2007



### List Corners to be Indexed

Corners	Section	Twp. /	Range
W1/4 Cor.	2	77	29
E1/4 Cor.	3	77	29