

INDX
ANNO
SCAN
CHEK

LISA SMITH, COUNTY RECORDER
MADISON IOWA

R. BRADLEY STUMBO P.O. BOX 1664 AMES, IOWA 50010 Phone 515-233-3689

UNITED STATES PUBLIC LAND SURVEY CORNER CERTIFICATE OF

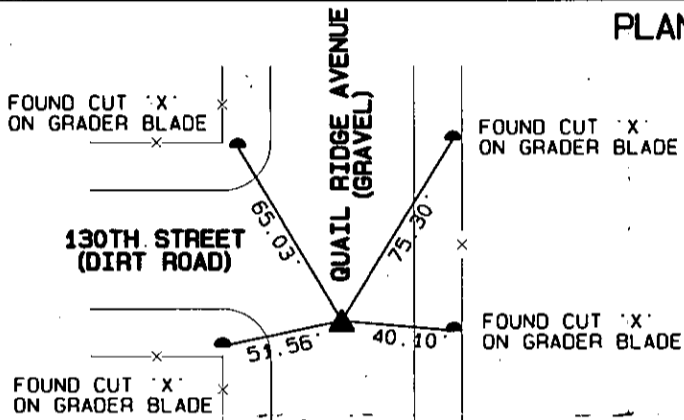
Land Survey Monuments situated in Section 23, Township 77 North, Range 27 West of the Fifth Principal Meridian, Madison County, Iowa.

Previously recorded _____

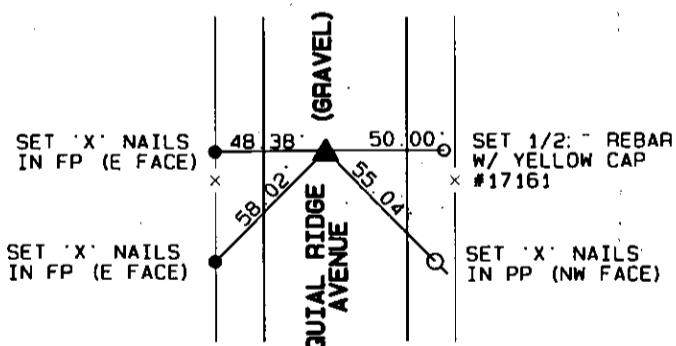
(BOOK, PAGE / INST. NO. / CABINET, SLIDE)

Monument Description and Remarks: THIS CERTIFICATE HAS BEEN PREPARED BECAUSE THERE ARE NONE OF RECORD FOR THESE CORNER.

PLAN - VIEW

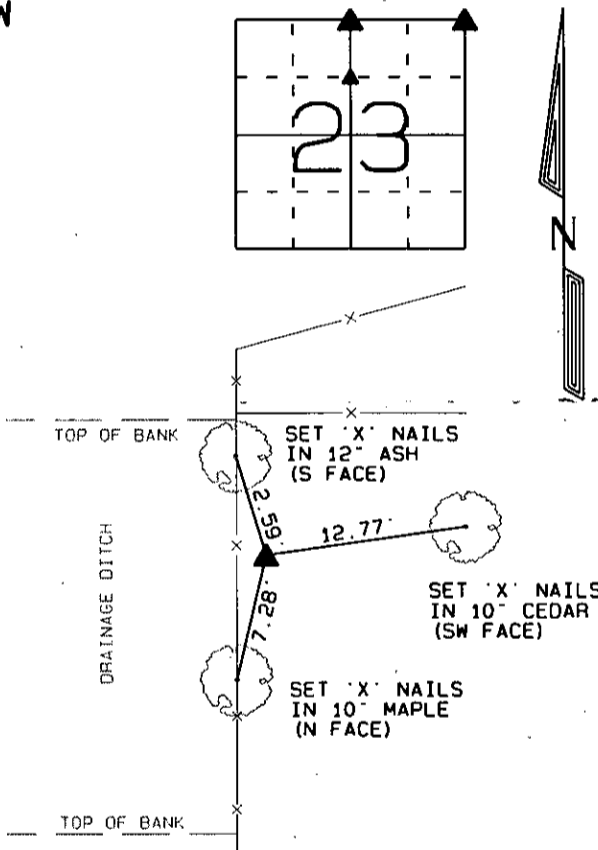


N 1/4 COR. SEC. 23-77-27
FOUND 3/8" REBAR, 0.7' DEEP,
USING MADISON COUNTY ENGINEER
TIES.



**SW COR. NW 1/4, NE 1/4
SEC. 23-77-27**

SET 1/2" REBAR W/YELLOW CAP #17161,
0.2' DEEP ON LINE AND MIDWAY BETWEEN
THE N1/4 CORNER AND CENTER OF SEC. 23.

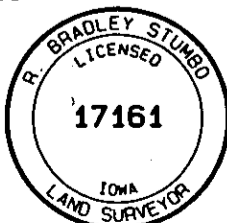


NE CORNER SEC. 23-77-27

SET 1/2" REBAR W/ YELLOW CAP #17161
FLUSH ON LINE BETWEEN THE N1/4 CORNER
OF SECTION 23 AND THE N1/4 CORNER OF
SECTION 24 IN LINE W/ FENCELINE SOUTH.
THERE ARE NO RECORDS AVAILABLE FOR
THIS CORNER. CORNER FALLS ON NORTH
SLOPE OF DRAINAGE-DITCH.

Certification: I hereby certify that this land surveying document was prepared and the related survey work was performed by me or under my direct personal supervision and that I am a duly licensed Land Surveyor under the laws of the State of Iowa.

R. Bradley Stumbo Date: 2-11-08
R. Bradley Stumbo License #17161
My license renewal date is December 31, 2009



List Corners to be Indexed

Corners	Section	Twp	Range
N 1/4 COR	23	77	27
NE COR	23	77	27
SW COR NW 1/4, NE 1/4	23	77	27