

INDX ✓  
ANNO  
SCAN.  
CHEK

LISA SMITH, COUNTY RECORDER  
MADISON IOWA

ASSOCIATED ENGINEERING COMPANY OF IOWA, 2917 MARTIN LUTHER KING JR. PARKWAY, DES MOINES, IOWA, (515) 255-3156

### UNITED STATES PUBLIC LAND SURVEY CORNER CERTIFICATE OF

Land survey monuments situated in Section 22, Township 74, Range 29  
of the Fifth Principal Meridian, Madison County, Iowa. Previously recorded  
in \_\_\_\_\_ in County Recorder's Office.

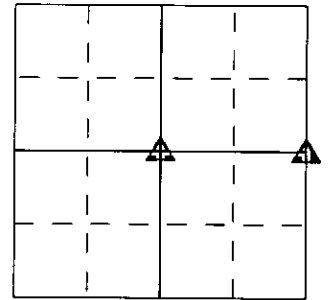
(Show reason for preparing this certificate, the evidence and detailed procedures used in establishing the corner positions & monumentation found or placed.)

MONUMENT DESCRIPTION AND REMARKS:  
FOUND CORNERS WITH NO TIES OF RECORD  
E1/4 CORNER - FOUND 1/2" IP, 0.2' DEEP  
CENTER OF SECTION - FOUND 1" IP 0.5' DEEP

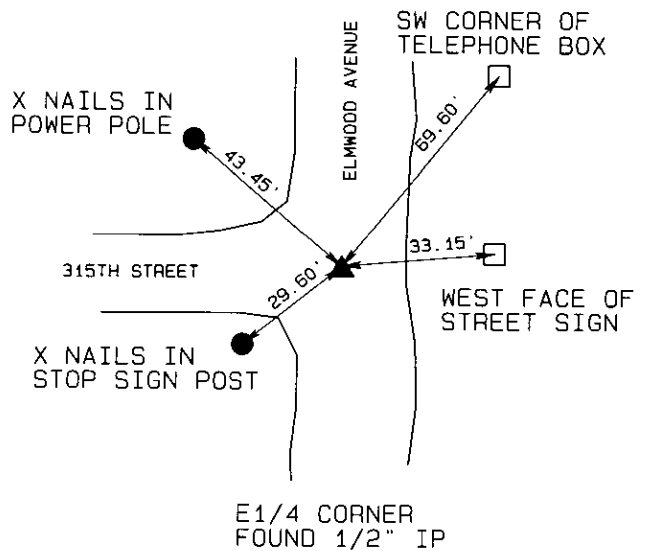
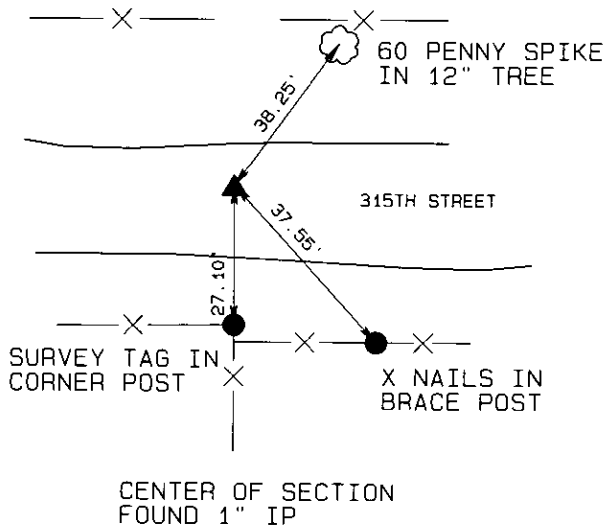
(203296)

#### PLAN - VIEW

(Show a minimum of three reference ties to durable physical objects, relevant monuments and physical conditions that will enable recovery of the corner.)



SECTION 22



(ALL DISTANCE ARE MEASURED HORIZONTAL UNLESS NOTED)

I hereby certify that this land surveying document was prepared and the related survey work was performed by me or under my direct personal supervision and that I am a duly licensed Land Surveyor, under the laws of the State of Iowa.

Signed *Vincent E. Piagentini* Date *2/12/08*  
VINCENT E. PIAGENTINI, L.S., Iowa Reg. No 15982  
MY LICENSE RENEWAL DATE IS - DECEMBER 31, 2008



PAGES OR SHEETS COVERED BY THIS SEAL: 1 OF 1

Corner	Section	Twp.	Range
E1/4 CORNER	22	74	29
CENTER OF SEC	22	74	29