



INDX
ANNO
SCAN

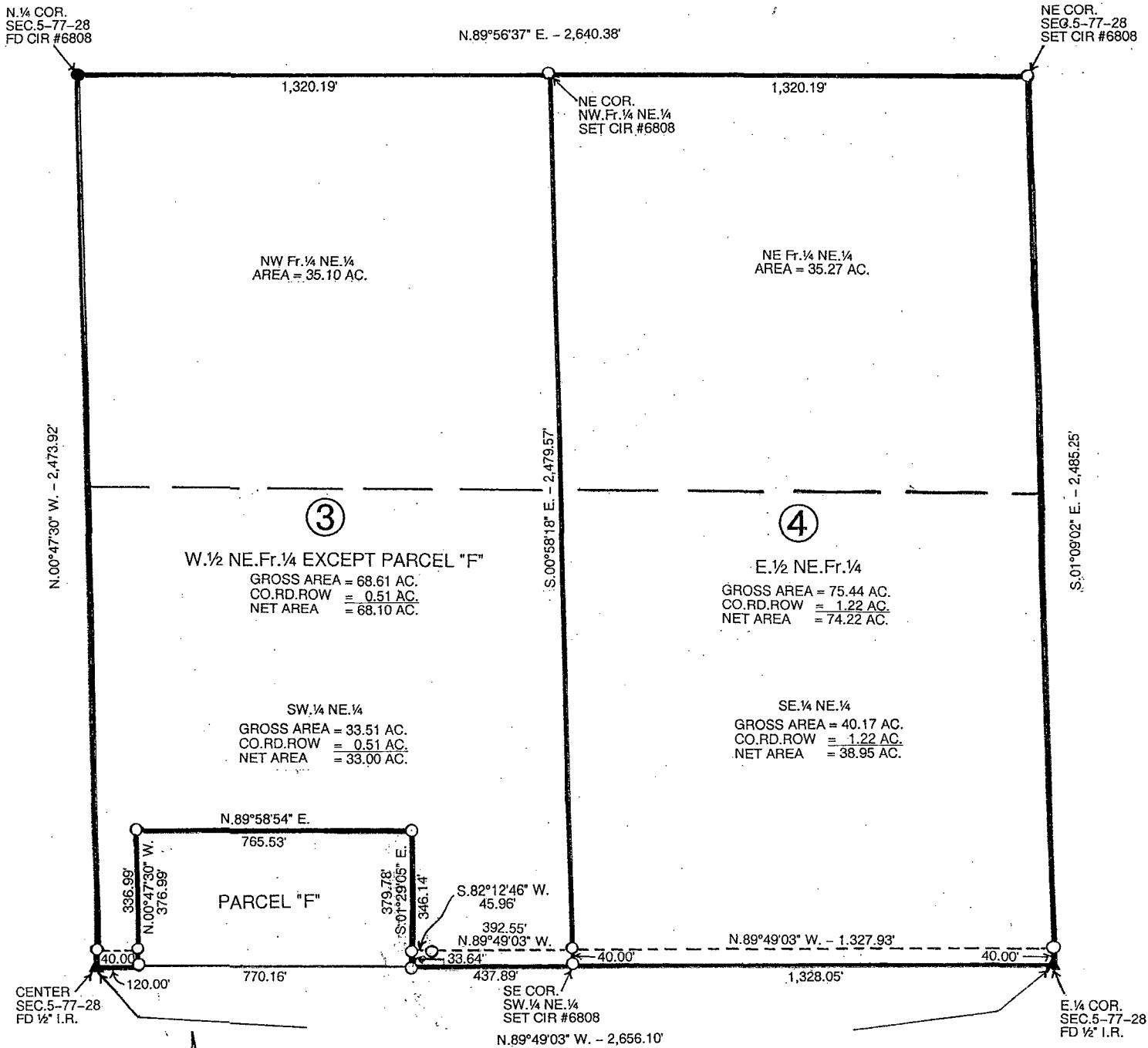
LISA SMITH, COUNTY RECORDER
MADISON COUNTY IOWA

CHEK

VANCE & HOCHSTETLER, P.C. • CONSULTING ENGINEERS • WINTERSET, IOWA • 50273

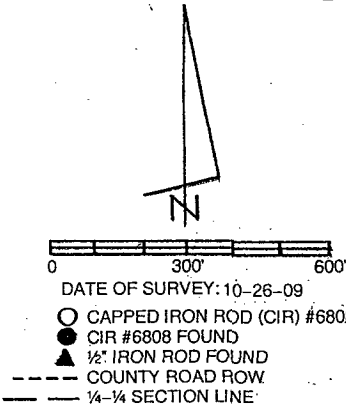
CHARLES T. VANCE • 110 WEST GREEN ST., WINTERSET, IOWA • (515) 462-3995
JAMES M HOCHSTETLER • 110 WEST GREEN ST., WINTERSET, IOWA • FAX: (515) 462 9845

PROPERTY LINE RETRACEMENT SURVEYS IN THE NORTHEAST FRACTIONAL
QUARTER OF SECTION 5, TOWNSHIP 77 NORTH, RANGE 28 WEST
OF THE 5TH P.M., MADISON COUNTY, IOWA OWNED BY
CYNTHIA A. DAILEY, MARY JO MARSH, JANE E. SCHIRM AND JUDY K. MAPES.



PROPERTY NO. 3
The West Half of the Northeast Fractional Quarter of Section 5, Township 77 North, Range 28 West of the 5th P.M., Madison County, Iowa except Parcel "F", containing 68.98 acres including 0.54 acres of County Road right-of-way.

PROPERTY NO. 4
The East Half of the Northeast Fractional Quarter of Section 5, Township 77 North, Range 28 West of the 5th P.M., Madison County, Iowa containing 75.44 acres including 1.22 acres of County Road right-of-way.



I hereby certify that this land surveying document was prepared and the related survey work was performed by me or under my direct personal supervision and that I am a duly licensed Land Surveyor under the laws of the State of Iowa.

J. M. Hochstetler
J.M. HOCHSTETLER
License number 6808 Date 11/5/09
My license renewal date is December 31, 2009
Pages or sheets covered by this seal: 1

LICENSED LAND SURVEYOR
J. M. HOCHSTETLER
#6808
IOWA