



Document 2009 3460

Book 2009 Page 3460 Type 06 043 Pages 1
Date 11/16/2009 Time 2:44 PM
Rec Amt \$9.00

INDX
ANNO
SCAN
CHEK

LISA SMITH, COUNTY RECORDER
MADISON COUNTY IOWA

VANCE & HOCHSTETLER, P.C., CONSULTING ENGINEERS, WINTERSSET, IOWA (515) 462-3995
CHARLES T. VANCE, 110 West Green St., Winterset, Iowa, 50273
JAMES M HOCHSTETLER, 110 West Green St., Winterset, Iowa 50273

09-1015

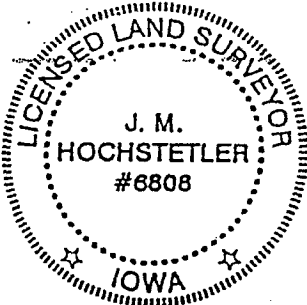
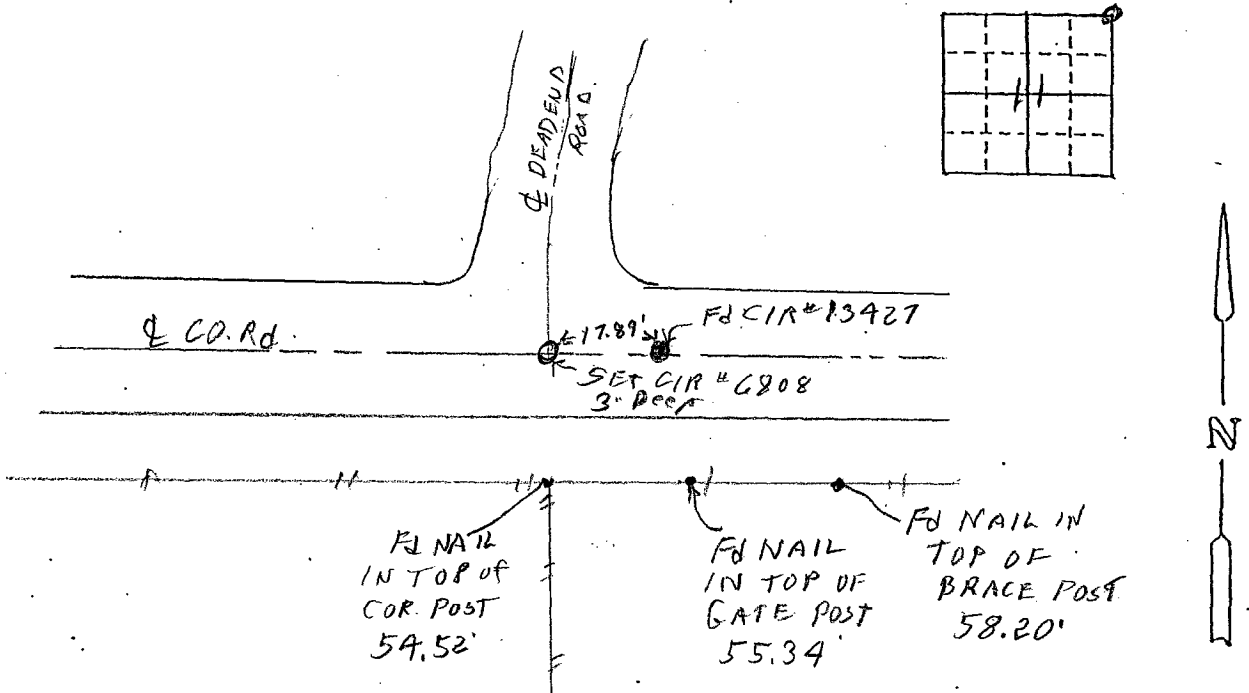
UNITED STATES PUBLIC LAND SURVEY CORNER CERTIFICATE

Land Survey Monuments situated in Section 11 OF 11 Township 75 N, Range 29 W, of the Fifth Principal Meridian, MADISON County, Iowa. Previously recorded in Book 2002 Page 2375 (As SW Cor 1) in County Recorder's Office. (book, page, document number, etc.)

(Show reason for preparing this certificate, the evidence and detailed procedures used in establishing the the corner positions and monumentation found or placed.)

Monument Description and Remarks: NE COR - Set yellow CIR #6808 at E. & W. County Road, Deadend County Road N., and projection of old property line fence to the south. We found CIR #13427 - tied in 2002 17.89 feet East of the Point we set. We shot the NW Cor. Sec. 11 and NE Cor. Sec. 12 and found the N. line of Sec. 11 to be 5.6' longer than the N. line of Sec. 12 while original survey measurements indicate Sec. 11 should be shorter than Sec. 12. Based on evidence at the site and research of records we believe the pin tied below PLAN - VIEW is where the corner should be.

(Show a minimum of three reference ties to durable physical objects, relevant monuments and physical conditions that will enable recovery of the corner.)



I hereby certify that this land surveying document was prepared and the related survey work was performed by me or under my direct personal supervision and that I am a duly licensed Land Surveyor under the laws of the State of Iowa.

J.M. Hochstetler
J.M. HOCHSTETLER
License number 6808 Date 11/16/09
My license renewal date is December 31, 2009
Pages or sheets covered by this seal: 1

List Corners to be Indexed

Corners	Section	Twp	Range
NE COR	11	75N	29W